

PIN #	COLOR
1	SHIELD
2	RED
3	BLACK
4	WHITE
5	BLUE

REVISIONS			
REV.	DESCRIPTION	DATE	APPROVED
A	REDRAWN IN SW	12/11/2009	

D

D

C

C

B

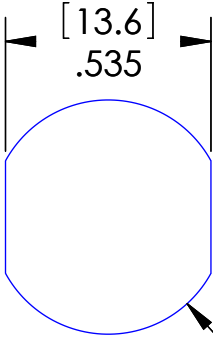
B

A

A

MATERIALS:	
INSERTS:	POLYAMIDE
CONTACTS:	GOLD PLATED COPPER ALLOY
SHELL:	NICKEL PLATED BRASS
CABLE:	DEVICENET DROP CABLE
LOCKNUT:	NICKEL PLATED BRASS
O-RING:	NBR

MOUNTING HOLE



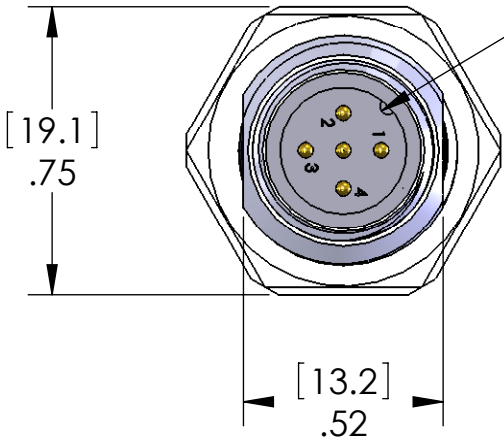
PROPRIETARY AND CONFIDENTIAL  
THE INFORMATION CONTAINED IN THIS  
DRAWING IS THE SOLE PROPERTY OF  
MENCOM CORPORATION. ANY  
REPRODUCTION IN PART OR AS A WHOLE  
WITHOUT THE WRITTEN PERMISSION OF  
MENCOM CORPORATION IS  
PROHIBITED.

VOLTS	300V
AMPS	4A
TEMP	105°C
SPECIFICATIONS	

UNLESS OTHERWISE SPECIFIED:  DIMENSIONS ARE IN INCHES AND [MM]	
MATERIAL	
FINISH	
DO NOT SCALE DRAWING	

NAME	
DWM	
DRAWN	
CHECKED	
ENG APPR.	
MFG APPR.	
Q.A.	
COMMENTS:	

MENCOM CORPORATION			
TITLE:			
SIZE	DWG. NO.	REV	
B	MDCDD-5MR-BM-ZZ	A	
SCALE: 2:1		WEIGHT:	SHEET 1 OF 1



KEYWAY IS ORIENTED  
AS SHOWN RELATIVE  
TO FLATS ON SHELL.

