

EPIC® SIGNAL M23

Rugged nickel-plated zinc connectors for power applications



Approvals



EPIC® SIGNAL M23 connectors are available in 11 housing styles that can accommodate 3 different insert keying positions. Inserts are offered in 7 contact configurations for mounting male or female, crimp, or solder contacts. Common to all arrangements are a rugged nickel-plated zinc body, plastic contact insulation body and sleeve, and gold-plated electrical contacts. Cable mounted arrangements also include an integral EMC shield ring and cable clamp and seal. The figure above shows the general construction of these connectors.

The connectors are offered with insert configurations for 6, 7, 8+1, 9, 12, 16 & 17 crimp or solder contacts in either a clockwise or counter-clockwise orientation. Used in combination, they connect one cable to another (cable coupler) or a cable to fixed wiring in a control enclosure or on a machine, instrument, encoder or servo motor.

Application advantage

- Rugged nickel-plated, die-cast zinc body
- Positive vibration protection for use with motor drives and moving assemblies
- Integral EMC cable gland provides strain relief, IP67/68 protection, and 360° shielding
- Coding rings ensure correct mating selection in multiple connector installations








Technical data

| | | | |
|------------------------------|--------------------------|----------------------------|-------------------------------|
| Number of contacts: | 6, 7, 8+1, 9, 12, 16, 17 | Wire gauge: | |
| Temperature range: | -25°C to +125°C | - crimp termination: | |
| Rated voltage: | | - 1 mm contacts: | 26 - 18 AWG (0.14 - 1.0 mm²) |
| - 6, 7, 8+1 & 9 poles: | 150V | - 2 mm contacts: | 18 - 14 AWG (1.0 - 2.5 mm²) |
| - 12 & 16 poles: | 100V | - solder termination: | |
| - 17 poles: | 50V | - 1 mm contacts: | up to 18 AWG (1.0 mm²) |
| Rated current: | | - 2 mm contacts: | up to 14 AWG (2.5 mm²) |
| - 6 & 7 poles: | 14A | Cable diameter: | 7.0 - 13.5 mm |
| - 8+1, 9, 12, 16 & 17 poles: | 7A | Mating cycles: | 100 minimum |
| Impulse voltage: | | Material: | |
| - 6 & 7 poles: | 4kV | - housing: | nickel-plated die-cast zinc |
| - 8+1 poles: | 2.5kV | - style C2: | nickel-plated copper alloy |
| - 9, 12 & 16 poles: | 1.5kV | - insulation body: | PA, PBT, V-0 per UL 94 |
| - 17 poles: | 0.8kV | - contacts: | gold-plated copper alloy |
| Protection class: | IP67/68 (10h/1m) | - gaskets & seals: | FPM |
| - style A3: | IP65 | Contact resistance: | < 4 mΩ |
| | | Approvals: | DIN EN 61984 cRUus #E75770 |

EPIC® SIGNAL M23 inserts








Connector inserts will accept both male and female contacts. A complete connection requires one E-type insert and one P-type insert.

E-type inserts

| Description | 6 contacts | 7 contacts | 8+1 contacts | 9 contacts | 12 contacts | 16 contacts | 17 contacts |
|---------------------------------------------------------|-----------------------------------------------------------------------------------|-----------------------------------------------------------------------------------|-----------------------------------------------------------------------------------|-----------------------------------------------------------------------------------|-------------------------------------------------------------------------------------|-------------------------------------------------------------------------------------|-------------------------------------------------------------------------------------|
| without contacts | 73002766 | 44420154 | 73002742 | 73002730 | 73002718 | 73002706 | 73008500 |
| with male solder contacts | 73002768 | 44420156 | 73002744 | 73002732 | 73002720 | 73002708 | 73028500 |
| with female solder contacts | 73002770 | 44420158 | 73002746 | 73002734 | 73002722 | 73002710 | 73018500 |
| insert configurations |  |  |  |  |  |  |  |
| | 2 mm contacts | 2 mm contacts | 1 & 2 mm contacts | 1 mm contacts | 1 mm contacts | 1 mm contacts | 1 mm contacts |
| clockwise numbered contacts viewed from the mating side | | | | | | | |

12 & 17 pole inserts for PCB soldering are available on request (non-stock)

P-type inserts

| Description | 6 contacts | 7 contacts | 8+1 contacts | 9 contacts | 12 contacts | 16 contacts | 17 contacts |
|-----------------------------------------------------------------|-------------------------------------------------------------------------------------|-------------------------------------------------------------------------------------|-------------------------------------------------------------------------------------|-------------------------------------------------------------------------------------|---------------------------------------------------------------------------------------|---------------------------------------------------------------------------------------|---------------------------------------------------------------------------------------|
| without contacts | 73002760 | 44420148 | 73002736 | 73002724 | 73002712 | 73002700 | 73008000 |
| with male solder contacts | 73002762 | 44420150 | 73002738 | 73002726 | 73002714 | 73002702 | 73028000 |
| with female solder contacts | 73002764 | 44420152 | 73002740 | 73002728 | 73002716 | 73002704 | 73018000 |
| insert configurations |  |  |  |  |  |  |  |
| | 2 mm contacts | 2 mm contacts | 1 & 2 mm contacts | 1 mm contacts | 1 mm contacts | 1 mm contacts | 1 mm contacts |
| counter-clockwise numbered contacts viewed from the mating side | | | | | | | |

12 & 17 pole inserts for PCB soldering are available on request (non-stock)

EPIC® SIGNAL M23 contacts

| Size AWG | mm ² | Description | Termination type | Part number |
|----------------------|-----------------|--------------------------|---------------------|-------------|
| 1 mm contacts | | | | |
| 26 - 18 | 0.14 - 1.0 | gold male contacts | crimp | 72400000 |
| 26 - 18 | 0.14 - 1.0 | gold female contacts | crimp | 74200600 |
| 26 - 18 | 0.14 - 1.0 | HYP gold female contacts | crimp | 74034500 |
| up to 18 | up to 1.0 | gold male contacts | solder | 72402000 |
| up to 18 | up to 1.0 | gold female contacts | solder | 72402600 |

| Size AWG | mm ² | Description | Termination type | Part number |
|----------------------|-----------------|----------------------|---------------------|-------------|
| 2 mm contacts | | | | |
| 18 - 14 | 1.0 - 2.5 | gold male contacts | crimp | 72401000 |
| 18 - 14 | 1.0 - 2.5 | gold female contacts | crimp | 72401600 |
| up to 14 | up to 2.5 | gold male contacts | solder | 72403000 |
| up to 14 | up to 2.5 | gold female contacts | solder | 72404000 |

EPIC® SIGNAL M23 style A1

Straight panel mount base

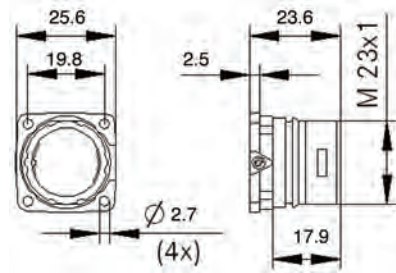
keying: N



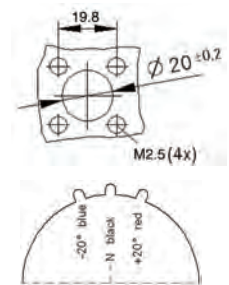
keying: -20°



keying: +20°



all dimensions are in mm



| Keying | Part number |
|--------|-------------|
| N | 72004000 |
| -20° | 72004100 |
| +20° | 72004200 |

Contact tools



Crimp tool:
11148000



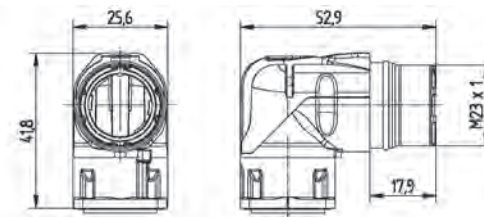
Locator:
11148300



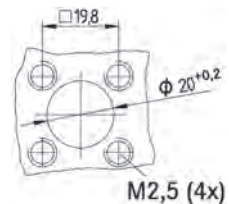
Removal tool:
44420078

EPIC® SIGNAL M23 style A3

Angled panel mount base



all dimensions are in mm



| Part number |
|-------------|
| 24420055 |

Contact tools



Crimp tool:
11148000



Locator:
11148300



Removal tool:
44420078

EPIC® SIGNAL M23 style D6

Cable connector

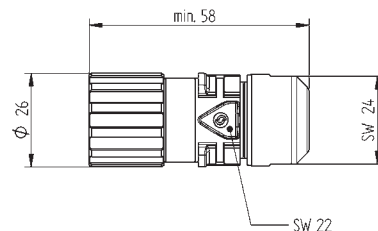
keying: N



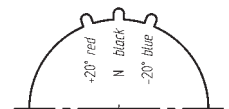
keying: -20°



keying: +20°



all dimensions are in mm



| Keying | Part number |
|--------|-------------|
| N | 44420037 |
| -20° | 44420036 |
| +20° | 44420038 |

Contact tools



Crimp tool:
11148000



Locator:
11148300

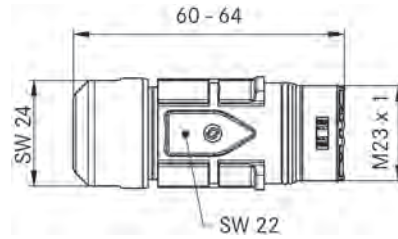
EPIC® SIGNAL M23 style F6

Cable coupler

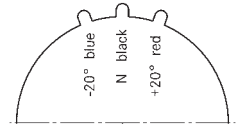
keying: N

keying: -20°

keying: +20°



all dimensions are in mm



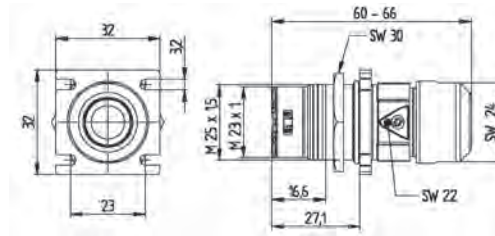
| Keying | Part number |
|--------|-------------|
| N | 44420040 |
| -20° | 44420039 |
| +20° | 44420041 |

Contact tools

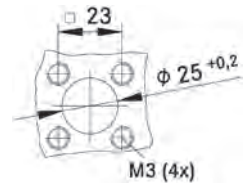
Crimp tool:
11148000Locator:
11148300

EPIC® SIGNAL M23 style F7

Cable coupler with flange



all dimensions are in mm



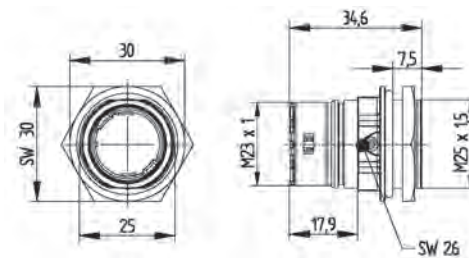
| Max. cable outer diameter | Part number |
|---------------------------|-------------|
| 7 - 10 mm | 44420009 |
| 9.5 - 13.5 mm | 44420011 |

Contact tools

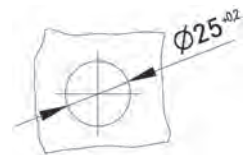
Crimp tool:
11148000Locator:
11148300

EPIC® SIGNAL M23 style G5

Front wall mounting with locknut or M25 x 1.5 thread mount



all dimensions are in mm



| Keying | Part number |
|--------|-------------|
| N | 44420046 |
| -20° | 44420044 |
| +20° | 44420048 |

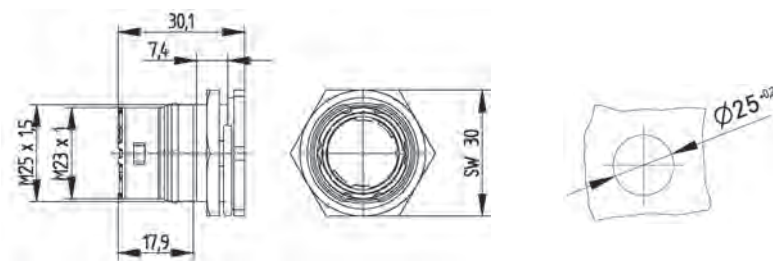
Contact tools

Crimp tool:
11148000Locator:
11148300Removal tool:
44420078

If not otherwise specified, all values relating to the product are nominal values.
Photographs are not to scale and are not true representations of the products in question.

EPIC® SIGNAL M23 style G6

Rear wall mounting



all dimensions are in mm

Part number

44420071

Contact tools



Crimp tool:
11148000



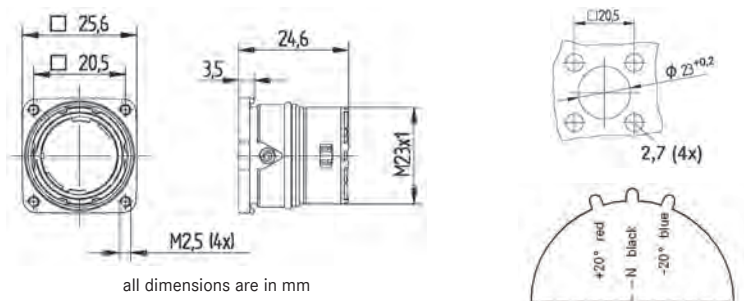
Locator:
11148300



Removal tool:
44420078

EPIC® SIGNAL M23 style B1

Rear wall mounting



all dimensions are in mm

Keying

Part number

N

44420024

-20°

44420022

+20°

44420026

Contact tools



Crimp tool:
11148000



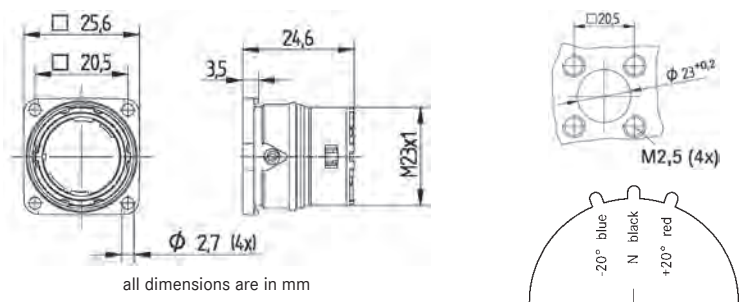
Locator:
11148300



Removal tool:
44420078

EPIC® SIGNAL M23 style B2

Rear wall mounting



all dimensions are in mm

Keying

Part number

N

44420050

-20°

44420052

+20°

44420035

Contact tools



Crimp tool:
11148000



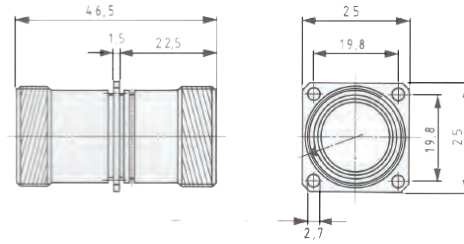
Locator:
11148300



Removal tool:
44420078

EPIC® SIGNAL M23 style C2

Panel mount feed-through



all dimensions are in mm

| Number of contacts | Part number |
|--------------------|-------------|
| 12 | 00010108 |
| 17 | 00010521 |

Contact tools



Crimp tool:
11148000



Locator:
11148300



Removal tool:
44420078

EPIC® SIGNAL M23 accessories & tools

metal screw cap



Style 1

Style 2

plastic protection cap



SILVYN® adapter



Adapter allows connection to jacketed cable run in SILVYN® conduit.

removal tool



| Style | Connector Style | Part number |
|-------|-----------------|-------------|
| 1 | A, F6, G | 75018110 |
| 2 | A, B, F7, O | 75018010 |

| Size | Part number |
|---------------|-------------|
| D6 | 75007710 |
| A, B, F, G, O | 75007810 |

| Size | Part number |
|-----------|-------------|
| M20 x 1.5 | 55001312 |

| Part number |
|-------------|
| 44420078 |



800.633.6339
www.lapptannehill.com