

WIRING		
MALE		FEMALE
PIN #1	-----	PIN #1
PIN #2	-----	PIN #2
PIN #3	-----	PIN #3
PIN #4	-----	PIN #4
PIN #5	-----	PIN #5
PIN #6	-----	PIN #6

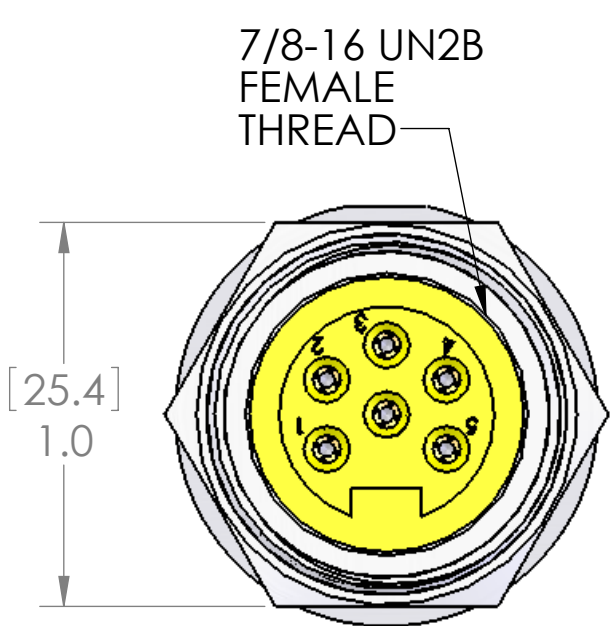
REVISIONS			
REV.	DESCRIPTION	DATE	APPROVED
A	REDRAWN IN SW	4/13/2005	

D

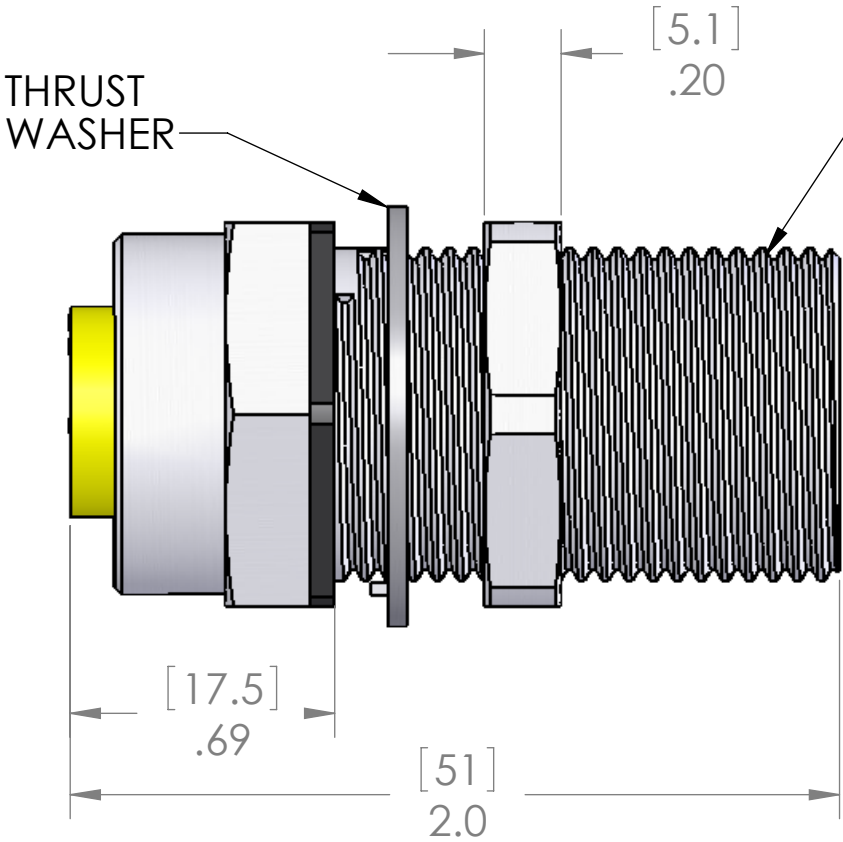
C

B

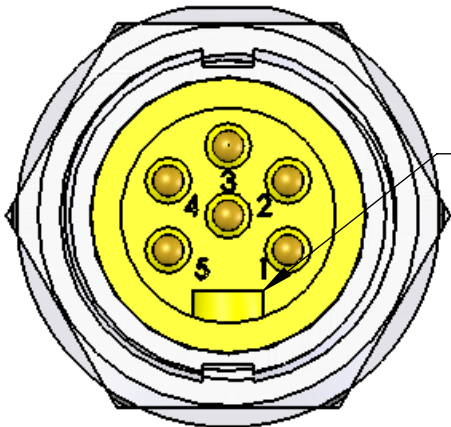
A



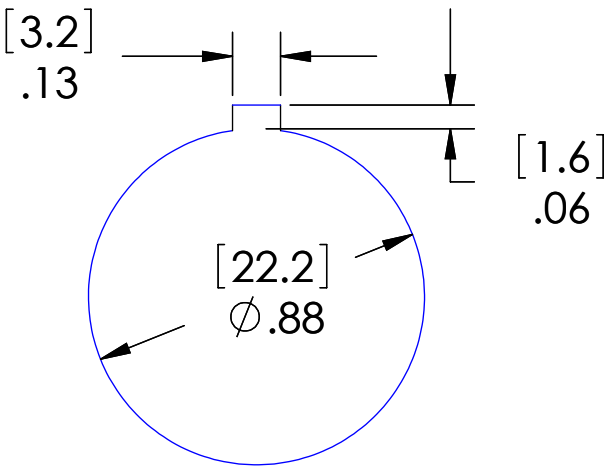
FEMALE



7/8-16 UN2A



MALE



CUTOUT

MATERIALS:	
SHELL:	CLEAR ANODIZED ALUMINUM
INSERTS:	PVC
CONTACTS:	GOLD PLATED COPPER ALLOY
JAM NUT:	CLEAR ANODIZED ALUMINUM
THRUST WASHER:	ZINC DIE CAST
GASKET:	BUNA-N

PROPRIETARY AND CONFIDENTIAL  
THE INFORMATION CONTAINED IN THIS  
DRAWING IS THE SOLE PROPERTY OF  
MENCOM CORPORATION. ANY  
REPRODUCTION IN PART OR AS A WHOLE  
WITHOUT THE WRITTEN PERMISSION OF  
MENCOM CORPORATION IS  
PROHIBITED.

VOLTS	600V
AMPS	8A
TEMP	105°C
SPECIFICATIONS	

UNLESS OTHERWISE SPECIFIED:		NAME
DIMENSIONS ARE IN INCHES	DRAWN	BEM
	CHECKED	
	ENG APPR.	
	MFG APPR.	
	Q.A.	
	COMMENTS:	
MATERIAL		
FINISH		
DO NOT SCALE DRAWING		

MENCOM CORPORATION

TITLE:  
6 POLE THROUGH MOUNT

SIZE	DWG. NO.	REV
B	MIN-6MFRF-TM	A
SCALE: 2:1	WEIGHT:	SHEET 1 OF 1