

WIRING				
CONN #1		CONN #2		CONN #3
1	---	1	---	1
2	---	2	---	4
3	---	3	---	3
4	---	4	---	2

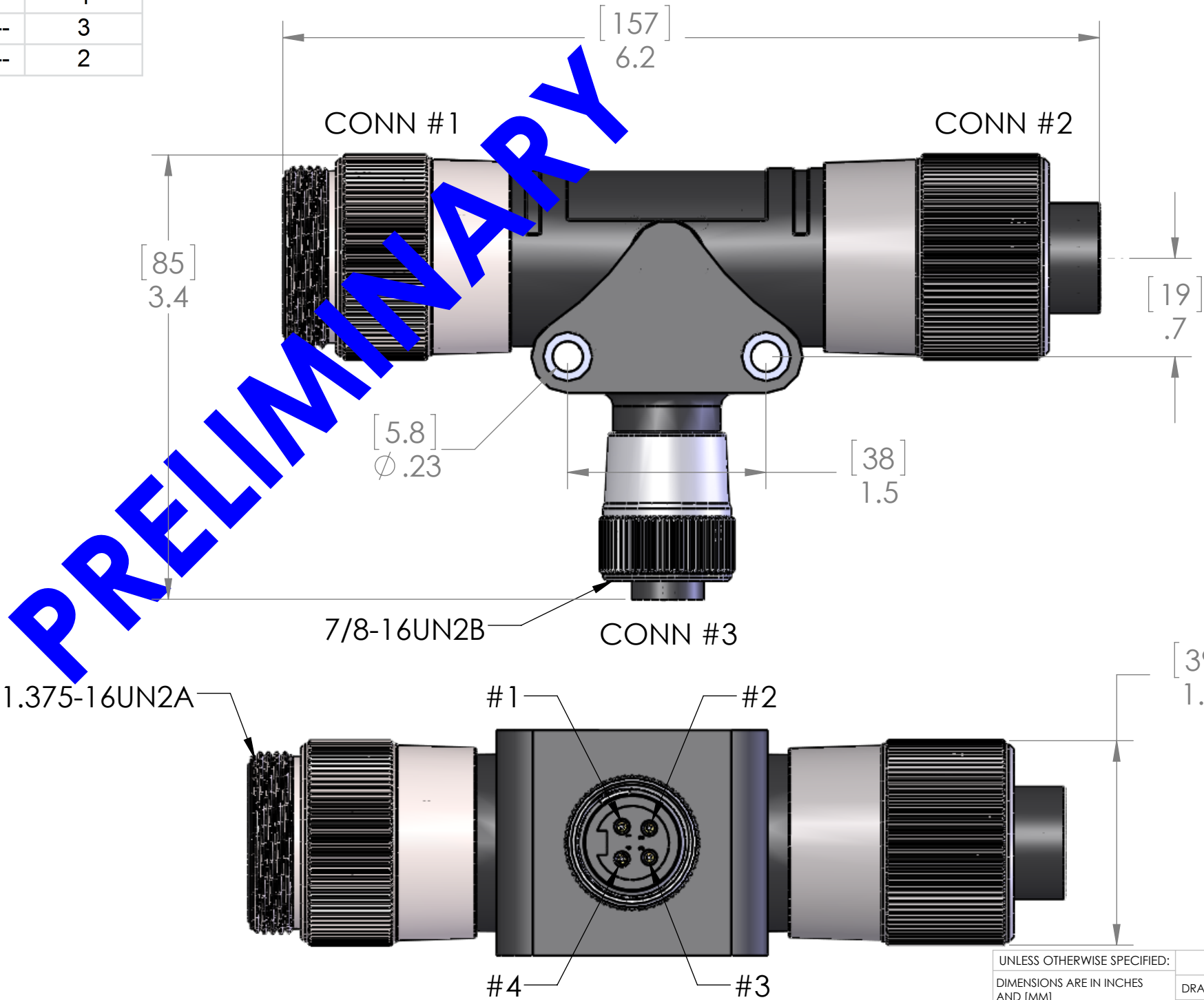
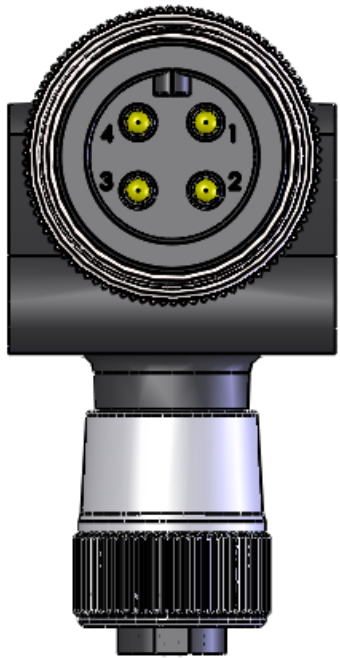
REVISIONS			
REV.	DESCRIPTION	DATE	APPROVED
X	PRELIM	1/20/2016	BEM

D

C

B

A



1.375-16UN2B
FEMALE

D

C

B

A

MATERIALS	
BODY:	BLACK PVC
CONTACTS:	GOLD PLATED COPPER ALLOY
INSERT:	BLACK PVC
COUPLING:	NICKEL PLATED BRASS

PROPRIETARY AND CONFIDENTIAL
THE INFORMATION CONTAINED IN THIS
DRAWING IS THE SOLE PROPERTY OF
MENCOM CORPORATION. ANY
REPRODUCTION IN PART OR AS A WHOLE
WITHOUT THE WRITTEN PERMISSION OF
MENCOM CORPORATION IS
PROHIBITED.

VOLTS	600V
AMPS	25A/15A
TEMP	90C
APPLICATION	

UNLESS OTHERWISE SPECIFIED: DIMENSIONS ARE IN INCHES AND [MM]
INTERPRET GEOMETRIC TOLERANCING PER:
MATERIAL
FINISH
DO NOT SCALE DRAWING

NAME	JJH
DRAWN	
CHECKED	
ENG APPR.	
MFG APPR.	
Q.A.	
COMMENTS:	

MENCOM CORPORATION

TITLE:

4 PL M-F-F PMIN T

SIZE	DWG. NO.	REV
B	PMINH-44MFF-T	X

SCALE: 1:1 WEIGHT: SHEET 1 OF 1