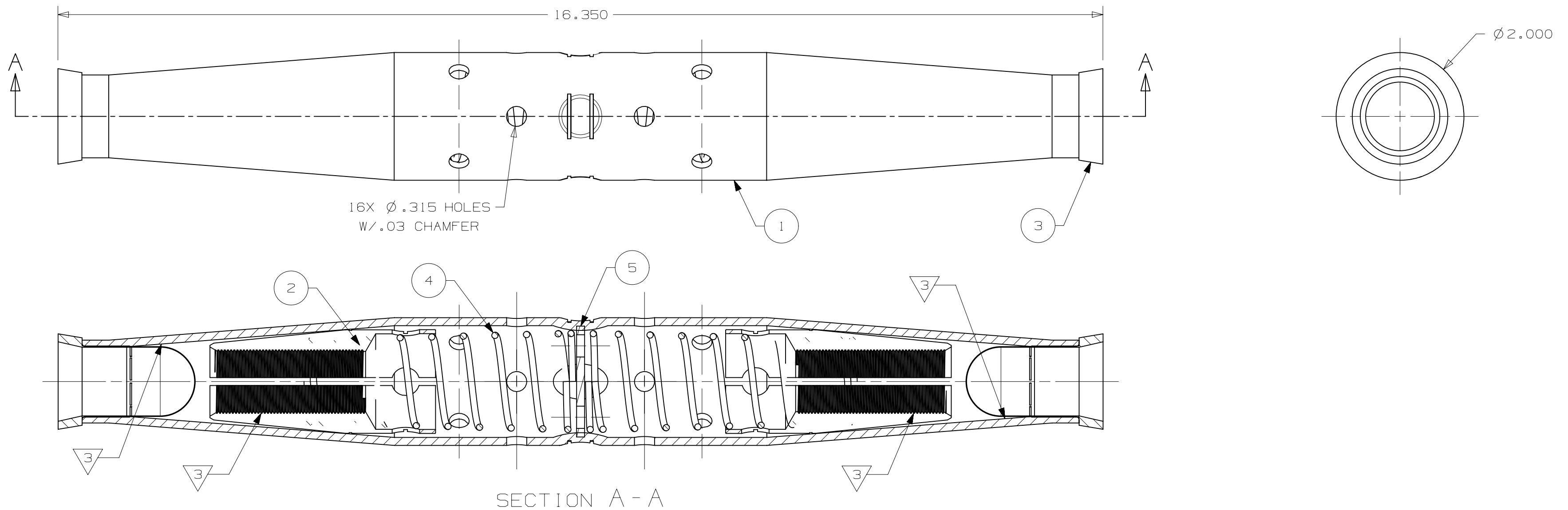


ITEM NO.	DESCRIPTION	QTY.
1	GL1355A TUBE - SWAGED WITH HOLES	1
2	FINISHED CONE JAW	2
3	PLASTIC PILOT CUP INSERT	2
4	SS CLOSED END SPRING	2
5	CENTER STOP	1

NOTES:

1. CONDUCTOR APPLICATION: CONSULT FARGO FOR ACSR AND AAAC, 700, 715 AAC CONDUCTORS (.940-.976 DIAMETER) COLOR: NATURAL.
2. PULL TESTED TO ANSI C119.4, SEQUENCE TESTED: SALT FOG TESTED TO ASTM G85, HEAT CYCLED PER ANSI C119.4, AND FAULT CURRENT TESTED.
- 3 INHIBITOR APPLIED TO JAW TEETH AND INSIDE OF TUBE.



49106	00	DETAIL NEW UG ASSEMBLY.	2/01/13	BAF	JES	DIMENSIONS IN INCHES
EC #	REV	DESCRIPTION	DATE	CHG BY	APPR'd	THIRD ANGLE PROJECTION
REVISION HISTORY						

HPS TOLERANCE CHART 0.0 ±0.010 0.00 ±0.000 0.000 ±0.015 EXCEPT AS NOTED		HUBBELL POWER SYSTEMS	
TITLE KORROSION RESISTANT AUTO SPLICE ASSEMBLY			
SIZE C	DWG NO. CC-20543	CAT / PART / ASSY NO. GL1355AKR	REV 00
SCALE: NONE	DRN BY: BAF	DATE: 3/21/12	SHEET 1 OF 1