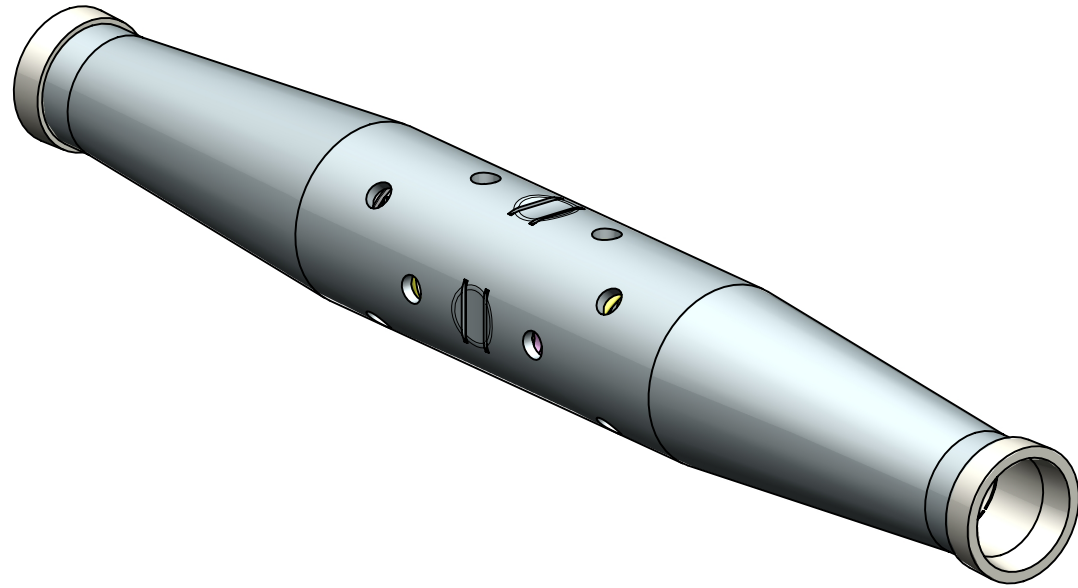
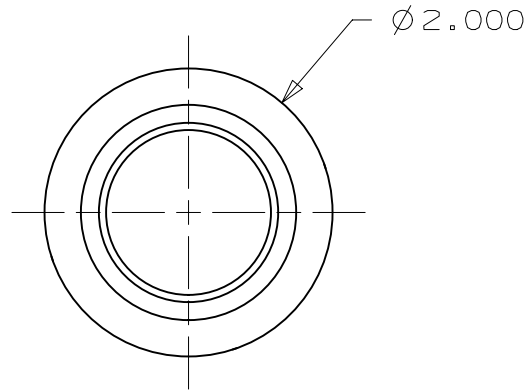
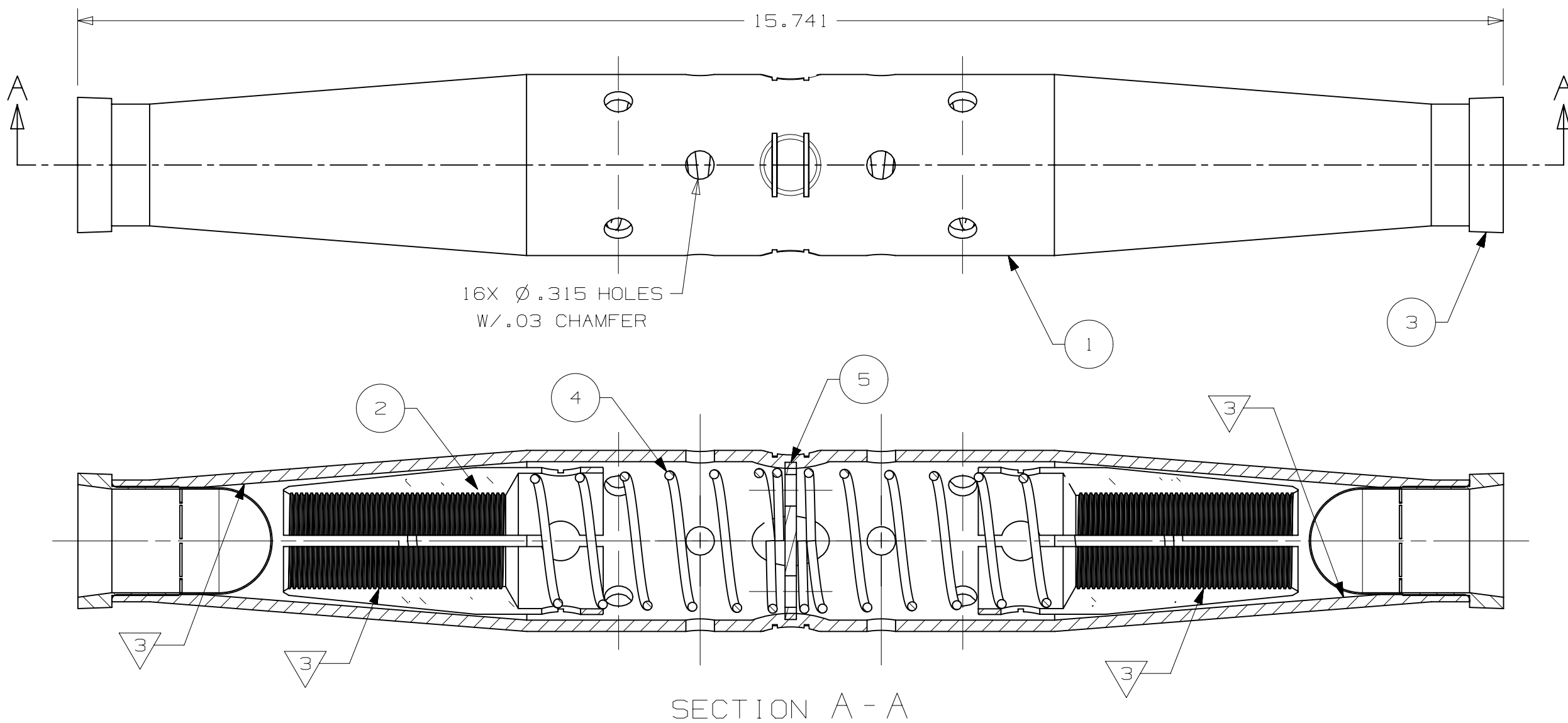


ITEM NO.	DESCRIPTION	QTY.
1	GL1385A TUBE - SWAGED WITH HOLES	1
2	FINISHED CONE JAW	2
3	PLASTIC PILOT CUP INSERT	2
4	SS CLOSED END SPRING	2
5	CENTER STOP	1

NOTES:

1. CONDUCTOR APPLICATION: CONSULT FARGO FOR ACSR AND AAAC, 795 AAC CONDUCTORS (.995-1.031 DIAMETER) COLOR: NATURAL.
2. PULL TESTED TO ANSI C119.4, SEQUENCE TESTED: SALT FOG TESTED TO ASTM G85, HEAT CYCLED PER ANSI C119.4, AND FAULT CURRENT TESTED.
- 3 INHIBITOR APPLIED TO JAW TEETH AND INSIDE OF TUBE.



SCALE 1:2

49106	00	DETAIL NEW UG ASSEMBLY.	2/01/13	BAF	JES	DIMENSIONS IN INCHES
EC #	REV	DESCRIPTION	DATE	CHG BY	APPR'd	
REVISION HISTORY						THIRD ANGLE PROJECTION

HPS[®]

TOLERANCE CHART

0.0 ±0.010 ANGLES ±1.5°
0.00 ±0.000 DO NOT USE
0.000 ±0.015 FRACTIONS
EXCEPT AS NOTED

HUBBELL[®]

POWER SYSTEMS

TITLE

KORROSION RESISTANT
AUTO SPLICE ASSEMBLY

CONFIDENTIAL: THIS DRAWING AND ITS
CONTENTS ARE CONFIDENTIAL AND THE
EXCLUSIVE PROPERTY OF HUBBELL
POWER SYSTEMS. NO PUBLICATION,
DISTRIBUTION OR COPIES MAY BE MADE
WITHOUT THE WRITTEN CONSENT OF
HUBBELL POWER SYSTEMS.
HUBBELL POWER SYSTEMS UNPUBLISHED
ALL RIGHTS RESERVED UNDER THE
COPYRIGHT LAWS.

SIZE DWG NO.

C CC-20544

CAT / PART / ASSY NO.

GL1385AKR

REV

01

SCALE: NONE

DRN BY: BAF

DATE: 3/22/12

SHEET 1 OF 1