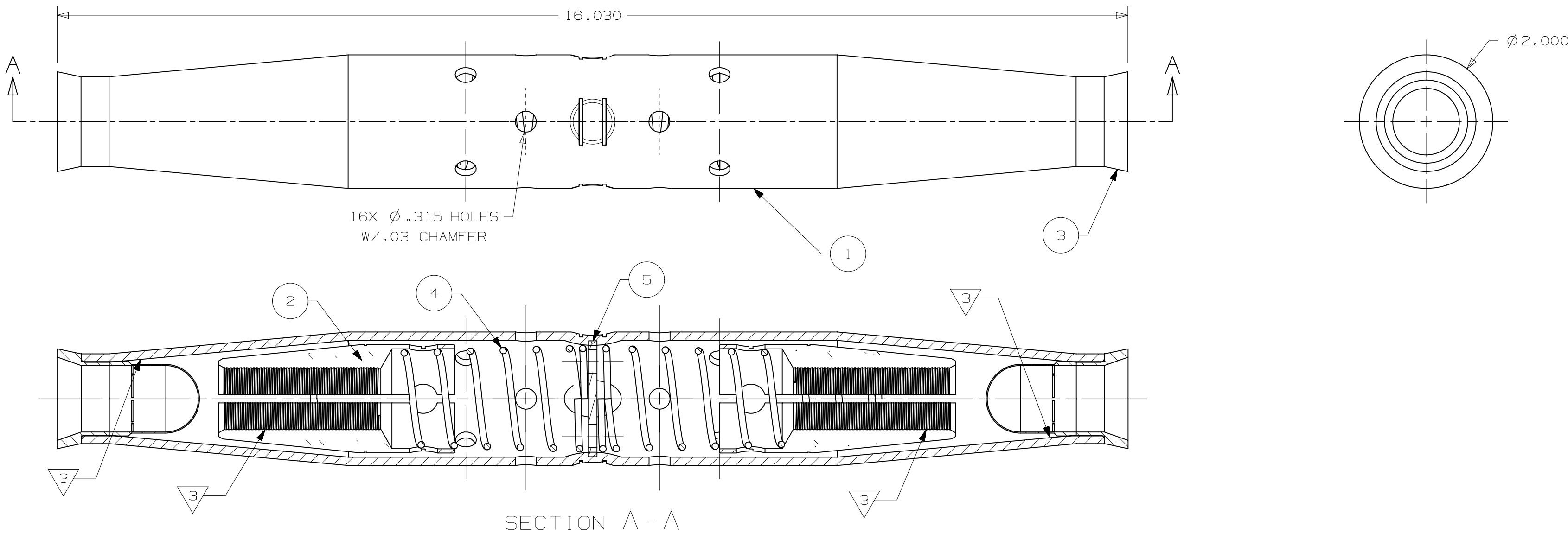


ITEM NO.	DESCRIPTION	QTY.
1	GL1351A TUBE - SWAGED WITH HOLES	1
2	FINISHED CONE JAW	2
3	PLASTIC PILOT CUP INSERT	2
4	SS CLOSED END SPRING	2
5	CENTER STOP	1

- NOTES:
- CONDUCTOR APPLICATION: FOR 556.5 (26/7) & 636 (18/1) ACSR, 652.8 (19 STR) AAAC CONDUCTORS (.927-.940 DIAMETER) SPLICE LIMITED TO 10,000 LBS MAX. TENSION FOR ALL APPLICABLE CONDUCTORS. COLOR: NATURAL.
 - PULL TESTED TO ANSI C119.4, SEQUENCE TESTED: SALT FOG TESTED TO ASTM G85, HEAT CYCLED PER ANSI C119.4, AND FAULT CURRENT TESTED.
- 3 INHIBITOR APPLIED TO JAW TEETH AND INSIDE OF TUBE.



48579	00	DETAIL NEW UG ASSEMBLY.	12/20/12	BAF	DJS	DIMENSIONS IN INCHES
EC #	REV	DESCRIPTION	DATE	CHG BY	APPR'd	THIRD ANGLE PROJECTION
REVISION HISTORY						

HPS[®]

TOLERANCE CHART

0.0	±0.010	ANGLES ±1.5°
0.00	±0.0030	DO NOT USE FRACTIONS EXCEPT AS NOTED
0.000	±0.0015	

HUBBELL[®] POWER SYSTEMS

TITLE

KORROSION RESISTANT
AUTO SPLICE ASSEMBLY

SIZE	DWG NO.	CAT / PART / ASSY NO.	REV
C	CC-20542	GL1351AKR	00
SCALE:	NONE	DRN BY: BAF	DATE: 8/10/12
SHEET 1 OF 1			