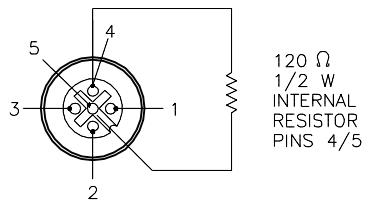


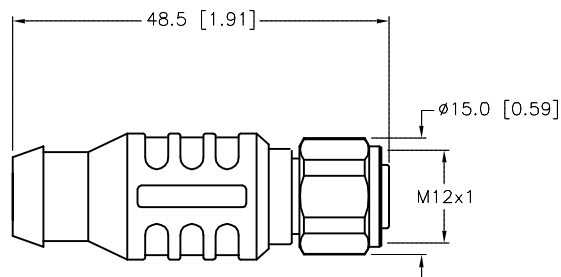
## FEMALE END VIEW



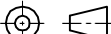
DeviceNet™

## SPECIFICATIONS

CONTACT CARRIER MATERIAL	TPU
MOLDED HEAD MATERIAL/COLOR	TPU/BLUE-GRAY
CONTACT MATERIAL/PLATING	BRASS/GOLD
COUPLING NUT MATERIAL/FINISH	STAINLESS STEEL/PASSIVATED
RATED VOLTAGE [V]	10-30 VDC (7.6 VDC MAX. ON PINS WITH RESISTOR)
INTERNAL RESISTOR	120 Ω (1/2 W)
PROTECTION CLASS	NEMA 1,3,4,6 AND IEC IP67, IP69K



SOURCE DRAWING - FOR REFERENCE ONLY

RELATED DOCUMENTS		3RD ANGLE PROJECTION		<div>THIS DRAWING IS CONFIDENTIAL AND THE PROPERTY OF TURCK INC. USE OF THIS DOCUMENT WITHOUT WRITTEN PERMISSION IS PROHIBITED.</div>		<div>TURCK</div>		<div>3000 CAMPUS DRIVE MINNEAPOLIS, MN 55441 1-800-544-7769 (763) 553-7300 (763) 553-0708 fax www.turck.us</div>	
1.									
2.		<div>ALL DIMENSIONS DISPLAYED ON THIS DRAWING ARE FOR REFERENCE ONLY</div> <div>CONTACT TURCK FOR MORE INFORMATION</div>		DRFT	RDS	DATE	05/02/06	<div>DESCRIPTION</div> <div>RKEV 57-TR2</div>	
3.				APVD		SCALE	1=1.0		
4.				<div>UNIT OF MEASUREMENT</div> <div>MILLIMETER [ INCH ]</div> <div>DO NOT SCALE THIS DRAWING</div>				<div>IDENTIFICATION NO.</div> <div>U3-00835</div>	
				<div>FILE: U3-00835</div>				<div>SHEET 1 OF 1</div>	

D	DRAWING PROCESSED AS PART OF ECO 33971	CBM	04/07/11	33971
REV	DESCRIPTION	BY	DATE	ECO NO.