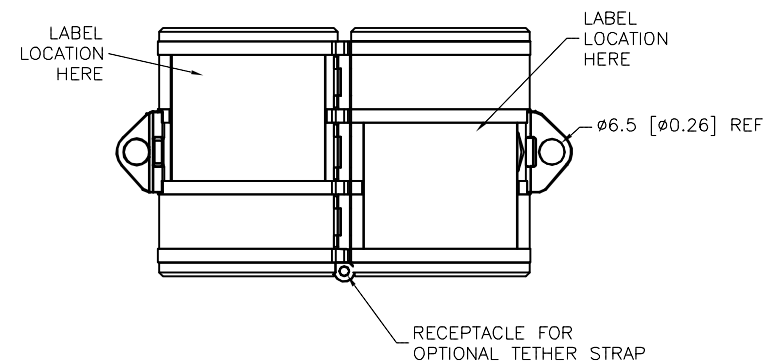


## SPECIFICATIONS

HOUSING MATERIAL/COLOR

NYLON 66/ BLACK

OPENED VIEW OF  
POWER LOCK DEVICE

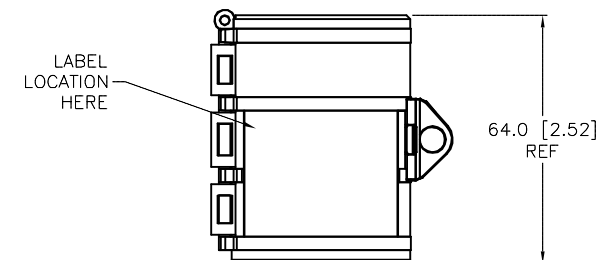
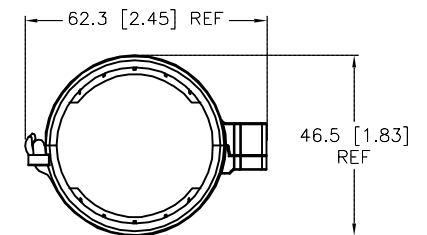
TO INSTALL POWER LOCK DEVICE,  
PLACE THE "M" SIDE TOWARDS MALE  
CONNECTOR, AROUND CORDSET END  
AND CLOSE UNTIL CONNECTOR SNAPS  
CLOSED.

"M" DESIGNATES  
MALE END

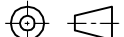
TO REMOVE POWER LOCK DEVICE, INSERT SMALL  
SCREWDRIVER INTO LOCKING GROOVE AS SHOWN IN  
PICTURE. ROTATE SCREWDRIVER IN DIRECTION  
SHOWN UNTIL LOCKING DEVICE RELEASES.

"F" DESIGNATES  
FEMALE END

LABEL  
LOCATION  
HERE



SOURCE DRAWING - FOR REFERENCE ONLY

RELATED DOCUMENTS 1. 2. 3. 4.	3RD ANGLE PROJECTION	THIS DRAWING IS CONFIDENTIAL AND THE PROPERTY OF TURCK INC. USE OF THIS DOCUMENT WITHOUT WRITTEN PERMISSION IS PROHIBITED.		<div>TURCK INC</div> <div>High Technology Sensors and Automation Controls</div> <div>3000 CAMPUS DRIVE MINNEAPOLIS, MN 55441 1-800-544-7769 (763) 553-7300 (763) 553-0708 fax turck.com</div>			
							
MATERIAL  SEE SPECIFICATIONS	ALL DIMENSIONS DISPLAYED ON THIS DRAWING ARE FOR REFERENCE ONLY	DRFT	KMY	DATE	04/05/12	DESCRIPTION  LOCK-MINI-D	
APVD		J.B.	SCALE	1=2.0			
FINISH  SEE SPECIFICATIONS		CONTACT TURCK FOR MORE INFORMATION	UNIT OF MEASUREMENT  MILLIMETER [ INCH ]			IDENTIFICATION NO.  A9744	REV  B
			DO NOT SCALE THIS DRAWING			FILE: A9744	SHEET 1 OF 1

B	UPDATE LOCKFAST PARTS USED IN ASSEMBLY	RDS	02/03/15	48708
REV	DESCRIPTION	BY	DATE	ECO NO.