

KI8505

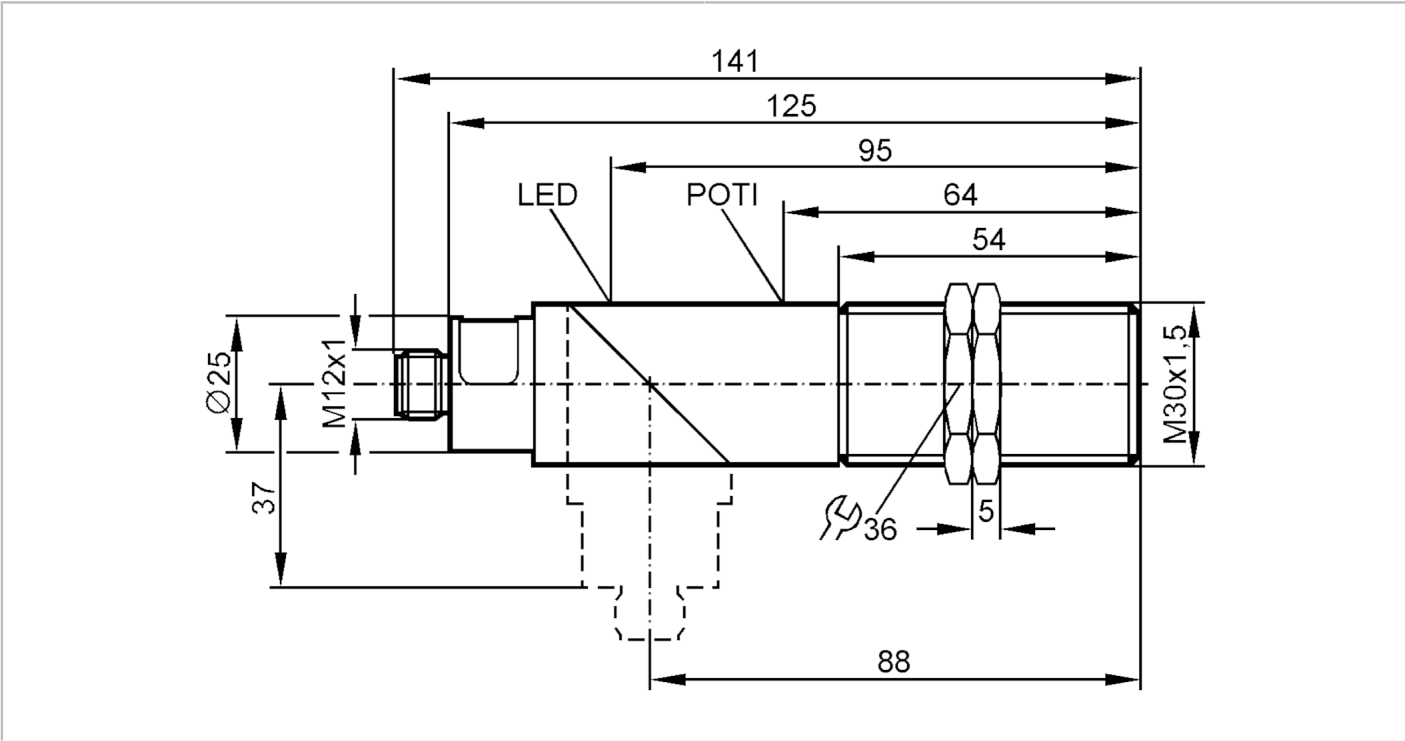


Capacitive sensor

KIE3015-FPKG/NI/US-100-DPX

Discontinued article

Alternative articles: KI5052
When selecting an alternative article and accessories please note that technical data may differ!



| Product characteristics | |
|-----------------------------|--------------------------------------|
| Electrical design | PNP |
| Output function | normally open / closed; (selectable) |
| Sensing range [mm] | 15 |
| Housing | Threaded type |
| Dimensions [mm] | M30 x 1.5 |
| Electrical data | |
| Operating voltage [V] | 10...55 DC |
| Current consumption [mA] | < 14 (24 V) / < 17,5 (55 V) |
| Protection class | II |
| Reverse polarity protection | yes |



Capacitive sensor

KIE3015-FPKG/NI/US-100-DPX

| Outputs | | |
|---|------------------|---|
| Electrical design | | PNP |
| Output function | | normally open / closed; (selectable) |
| Max. voltage drop switching output DC | [V] | 2.5 |
| Max. leakage current | [mA] | 4 (24 V) / 7.5 (55 V) |
| Permanent current rating of switching output DC | [mA] | 250 |
| Switching frequency DC | [Hz] | 40 |
| Short-circuit proof | | yes |
| Overload protection | | yes |
| Monitoring range | | |
| Sensing range | [mm] | 15 |
| Accuracy / deviations | | |
| Hysteresis | [% of Sr] | 1...15 |
| Switch-point drift | [% of Sr] | -15...15 |
| Operating conditions | | |
| Ambient temperature | [°C] | -25...80 |
| Protection | | IP 65 |
| Increased immunity | | yes; (Increased immunity to conducted radio frequency interference) |
| Tests / approvals | | |
| EMC | | EN 60947-5-2 |
| MTTF | [years] | 743 |
| Mechanical data | | |
| Weight | [g] | 134 |
| Housing | | Threaded type |
| Mounting | | non-flush mountable |
| Dimensions | [mm] | M30 x 1.5 |
| Thread designation | | M30 x 1.5 |
| Material | | PBT; end cap: PC |
| Displays / operating elements | | |
| Display | Switching status | 1 x LED, yellow |
| Accessories | | |
| Items supplied | | lock nuts: 2 screwdriver: 1 |
| Remarks | | |
| Pack quantity | | 1 pcs. |
| Electrical connection - plug | | |
| Connector: 1 x M12 | | |

KI8505

Capacitive sensor

KIE3015-FPKG/NI/US-100-DPX



Connection

