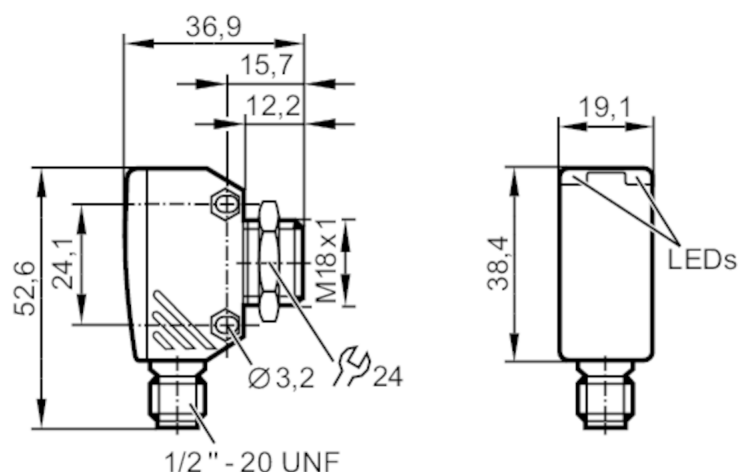




## Through-beam sensor receiver

OGE-DBOW/LS/CUBE

Discontinued article



### Product characteristics

Type of light	red light
Housing	rectangular
Dimensions [mm]	M18 x 1

### Application

Function principle	Through-beam sensor
--------------------	---------------------

### Electrical data

Frequency AC [Hz]	47...63
Operating voltage [V]	20...250 AC
Protection class	II; (double insulated)
Type of light	red light
Wave length [nm]	633

### Outputs

Output function	dark-on mode
Max. voltage drop switching output AC [V]	8
Minimum load current [mA]	5
Max. leakage current [mA]	1.7
Permanent current rating of switching output AC [mA]	150; (200 (...40 °C))
Short-time current rating of switching output [mA]	1200; (20 ms / 0,5 Hz)
Switching frequency AC [Hz]	30
Short-circuit protection	no
Overload protection	no



## Through-beam sensor receiver

OGE-DBOW/LS/CUBE

Monitoring range		
Transmitter / receiver		receiver
Range [m]		< 20
Range adjustable		no
Operating conditions		
Ambient temperature [°C]		-25...60
Protection		IP 67
Tests / approvals		
EMC	EN 60947-5-2	
	EN 55011 emission	class B
MTTF [years]		365
Mechanical data		
Weight [g]		61
Housing		rectangular
Dimensions [mm]		M18 x 1
Thread designation		M18 x 1
Material		diecast zinc; PEI
Lens material		PMMA
Lens alignment		Side sensing
Displays / operating elements		
Display	Switching status	1 x LED, yellow
Electrical connection		
Required protection		miniature fuse to IEC60127-2 sheet 1; ≤ 2 A; fast acting
Accessories		
Items supplied		lock nut: 1 x
Remarks		
Remarks		Do not connect without a load.
Pack quantity		1 pcs.

### Electrical connection

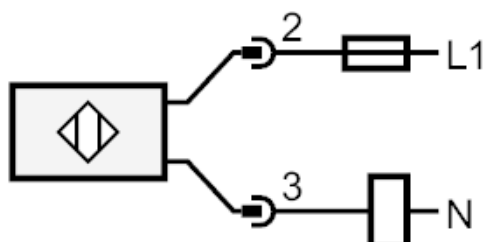
Connector: 1 x 1/2"



## Through-beam sensor receiver

OGE-DBOW/LS/CUBE

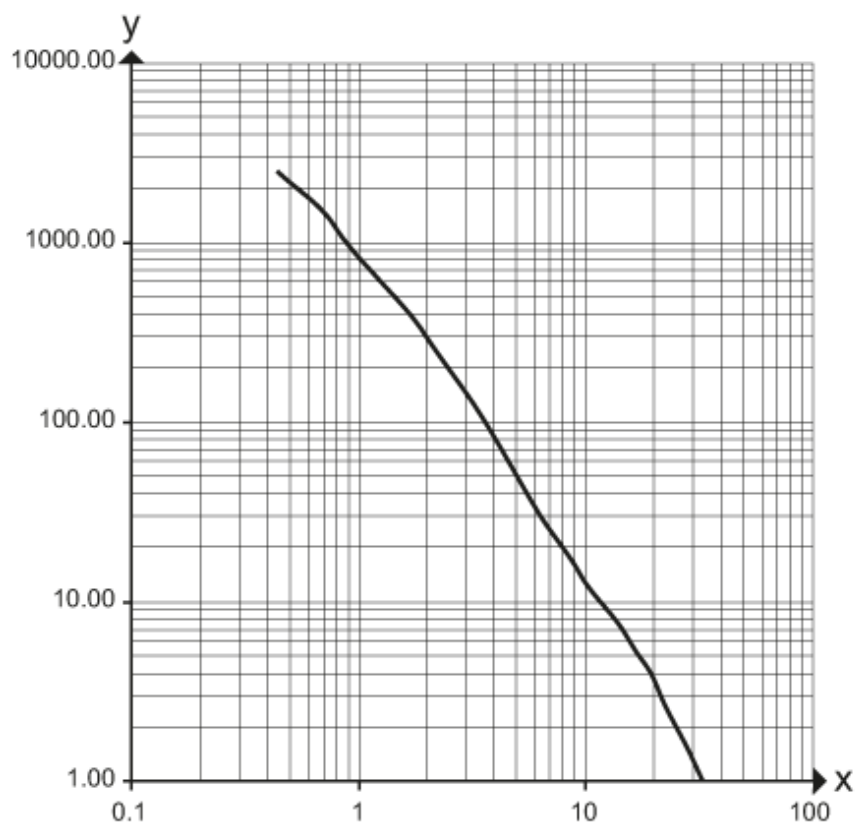
### Connection



Note : miniature fuse to IEC60127-2 sheet 1  $\leq 2$  A fast acting

### Diagrams and graphs

excess gain graph



x: Abstand [m]

y: Funktionsreservefaktor