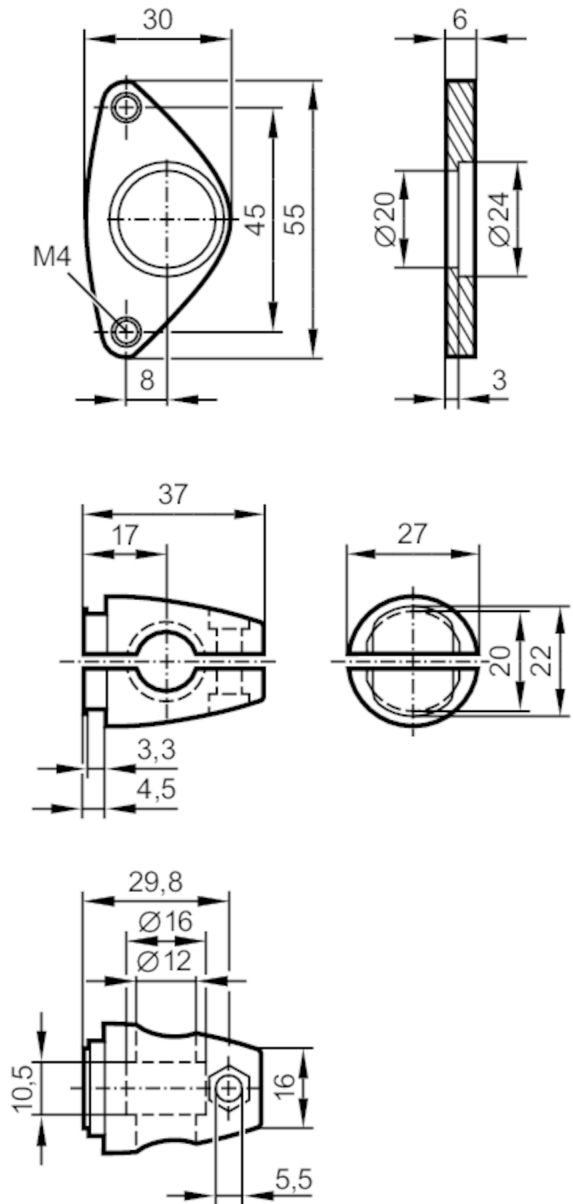


# E2D110



## Mounting set for vision sensors

Mounting set vision sensor



### Application

Design

Clamp mounting

### Mechanical data

Weight

[g]

130

Type of mounting

Mounting rod; (Ø 12 mm)

Material

fixture: stainless steel (1.4301 / 304); Clamp: stainless steel (1.4408)

### Remarks

Pack quantity

1 pcs.