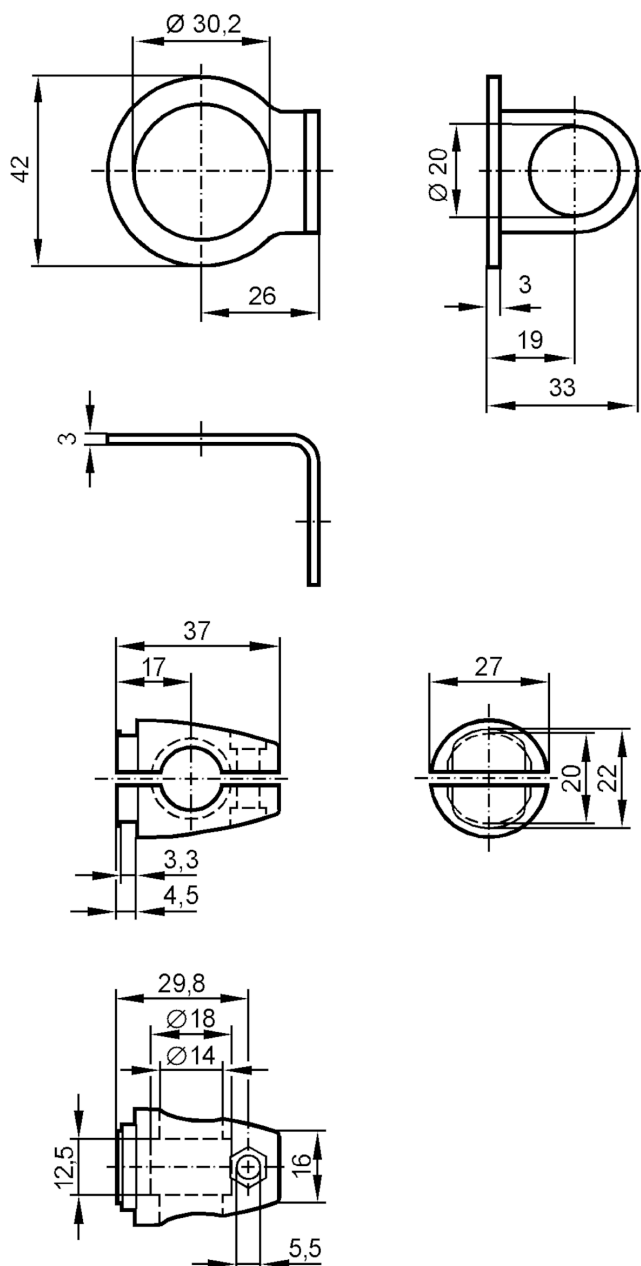




Mounting set for position sensors

SYSTEM COMPONENT M30 BOLT



Application

Design

Clamp mounting

Mechanical data

Weight

[g]

203.5

Type of mounting

free-standing; (M12)

Dimensions

[mm]

 $\varnothing 30.2$

Material

fixture: stainless steel (1.4571/316Ti); Clamp: diecast zinc

Accessories

Items supplied

screw: 1 x M12 x 55

Remarks

Pack quantity

1 pcs.