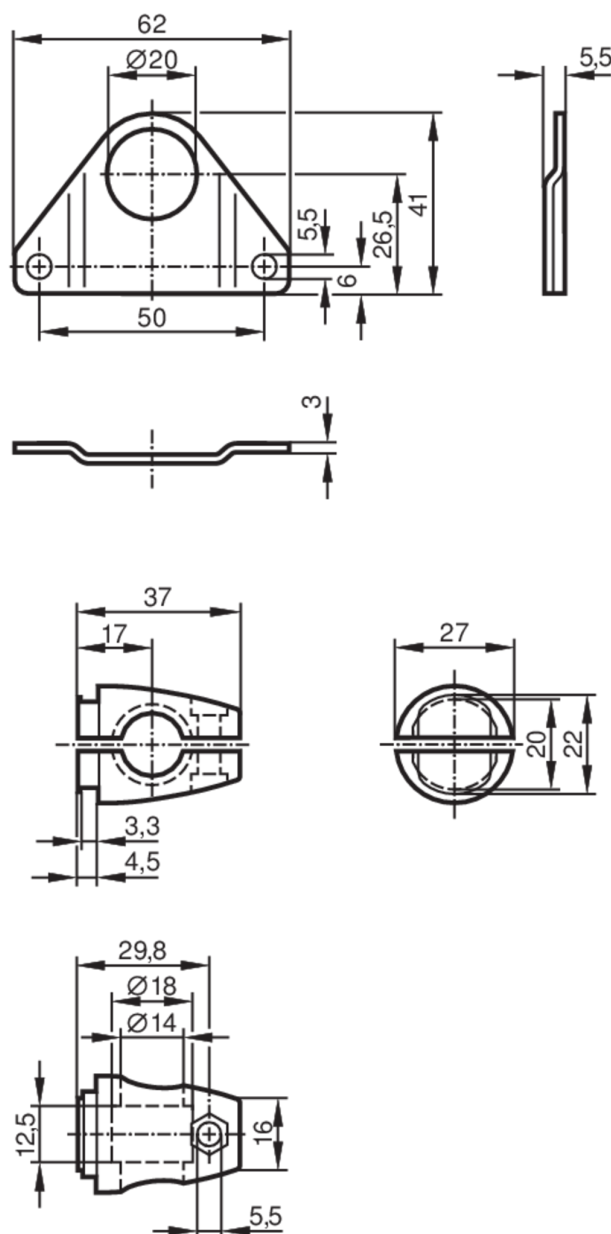




Mounting set for photoelectric sensors

SYSTEM COMPONENT OL BOLT

Discontinued article



Application

Design

Clamp mounting

Mechanical data

Weight

[g]

266

Type of mounting

free-standing; (M12)

Material

Clamp: stainless steel (1.4408); fixture: stainless steel (1.4571/316Ti)

Accessories

Items supplied

screw: 1 x M12 x 120

Remarks

Pack quantity

1 pcs.