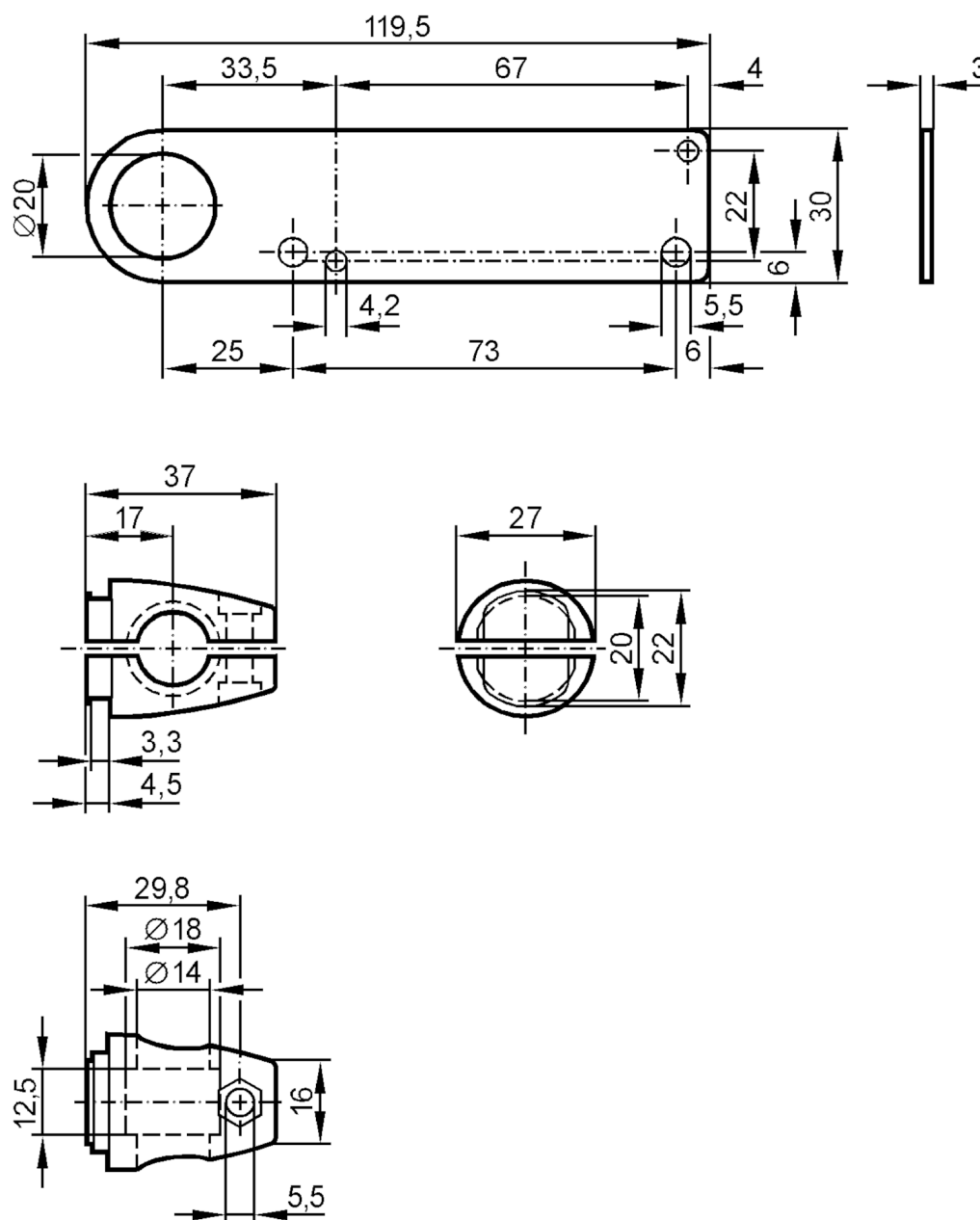


Mounting set for photoelectric sensors

SYSTEM COMPONENT OA BOLT

Discontinued article



Application

Design

Clamp mounting

Mechanical data

Weight

[g]

276.8

Type of mounting

free-standing; (M12)

Material

fixture: stainless steel (1.4571/316Ti); Clamp: stainless steel (1.4408)

Accessories

Items supplied

screw: 1 x M12 x 55

Remarks

Pack quantity

1 pcs.