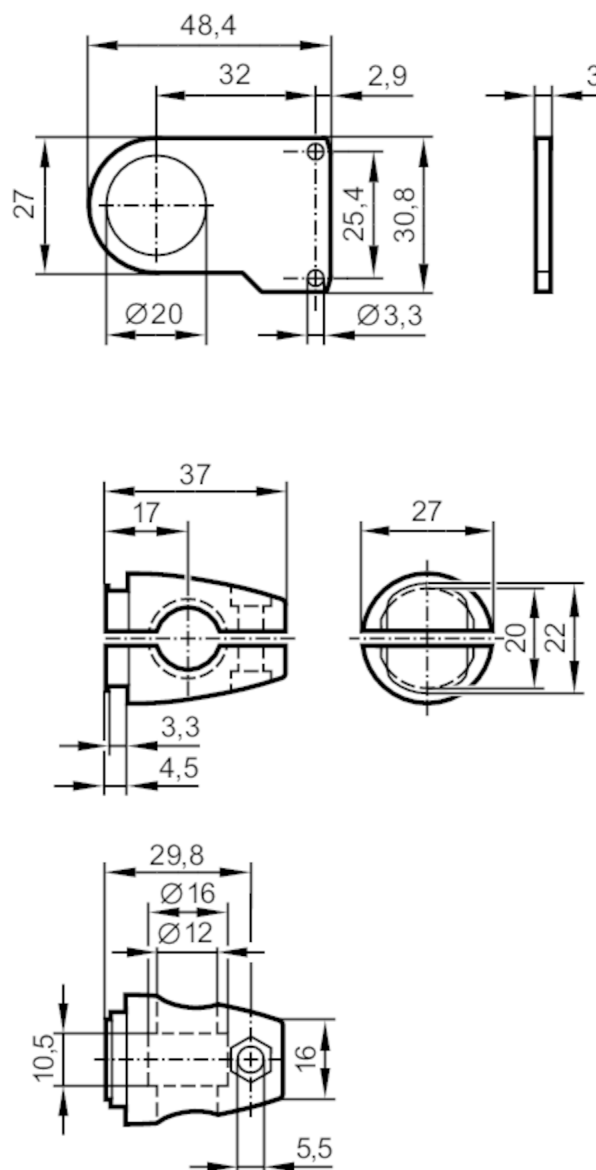


E21275



Mounting set for photoelectric sensors

O6 CLAMP BRACKET 12 MM



Application

Design

Clamp mounting

Mechanical data

Weight

[g]

105.8

Type of mounting

Mounting rod; (Ø 12 mm)

Dimensions

[mm]

Ø 12

Material

stainless steel (1.4571/316Ti)

Accessories

Items supplied

cylinder screws: 2 x M3 x 14

Clamp

head cap screw

Nut: M4

E21275



Mounting set for photoelectric sensors

O6 CLAMP BRACKET 12 MM

Remarks	
Pack quantity	1 pcs.