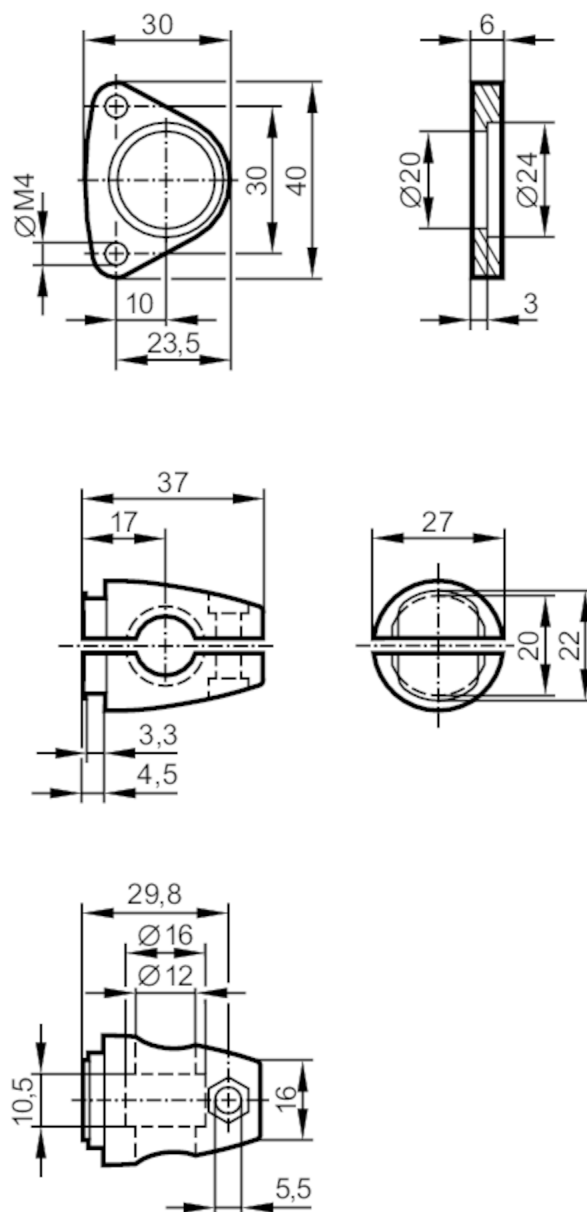


E2D101



Mounting set for photoelectric distance sensors

MOUNTING SET O1D 12MM



Application	
Design	Clamp mounting
Mechanical data	
Weight [g]	118.5
Type of mounting	Mounting rod; (Ø 12 mm)
Material	fixture: stainless steel (1.4301 / 304); Clamp: stainless steel (1.4408); screws: stainless steel; Nut: stainless steel
Accessories	
Items supplied	socket head screws: 2 x M4 x 45
Remarks	
Pack quantity	1 pcs.