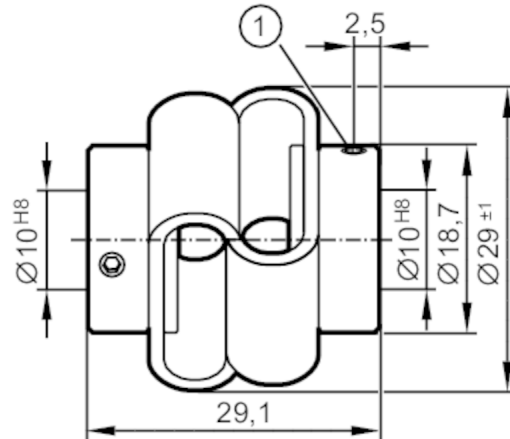
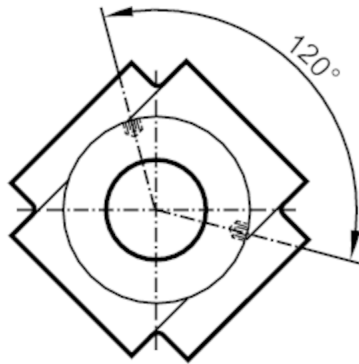


E61437



Flexible coupling for encoders

DL COUPLING V2A 29-10-10-29-SV



1 clamping screw M3 x 4

Operating conditions

Ambient temperature [°C] -30...80

Mechanical data

Weight [g]	27.6
Outer diameter [mm]	29
Material	shaft adapter: stainless steel (1.4305 / 303); double-loop coupling: PU
Tightening torque [Nm]	0.5
Inside diameter A1 [mm]	10
Inside diameter A2 [mm]	10
Depth of the clamping hub [mm]	13
Clamp screw [mm]	M3 x 4
Length [mm]	29.1
Max. revolution, mechanical [U/min]	3000
Max. axial shaft misalignment [mm]	± 2
Max. radial shaft misalignment [mm]	± 2
Max. angular displacement [°]	± 10
Rigidity of the torsion spring [Nm/rad]	13

Remarks

Remarks	The data indicated apply to couplings with the above hub borings at an ambient temperature of 23 °C. The values of radial, angular and axial displacement are maximum values which must not reach their maximum simultaneously while in operation.
Pack quantity	1 pcs.