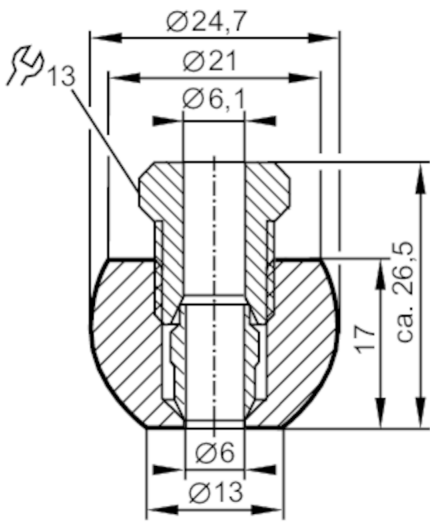




Welding adapter for process sensors

WELDING ADAPTER D6



| Application | |
|------------------------------|---|
| Design | for temperature sensors Ø 6 mm |
| Installation | Clamp fitting |
| Pressure rating [bar] | 160 |
| Tests / approvals | |
| Pressure equipment directive | A possible classification to PED depends on the application and has to be carried out by the user / operator. |
| Safety instructions | The compatibility between medium and product material has to be checked in all applications. |
| Mechanical data | |
| Weight [g] | 63 |
| Material | stainless steel (1.4404 / 316L) |
| Sensor connection | Ø 6 mm |
| Process connection | Welding adapter Ø 24,7 mm |
| Remarks | |
| Pack quantity | 1 pcs. |