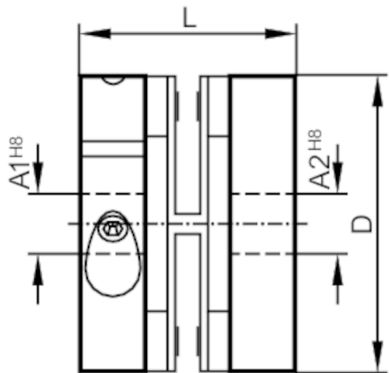


E60118



Spring disc coupling electrically isolating

SPRING COUPLING 30-10-10-22



Mechanical data		
Weight	[g]	29.9
Dimensions	[mm]	Ø 30 / L = 22
Material		aluminum; PA
Tightening torque	[Nm]	tightening torque screws: 100 Ncm; Spring disc coupling: 60 Ncm
External diameter D	[mm]	30
Inside diameter A1	[mm]	10
Inside diameter A2	[mm]	10
Length L	[mm]	22
Max. revolution, mechanical	[U/min]	12000
Max. axial shaft misalignment	[mm]	± 0,4
Max. radial shaft misalignment	[mm]	± 0,3
Max. angular displacement	[°]	± 2,5
Rigidity of the torsion spring	[Nm/rad]	50
Remarks		
Remarks	The data indicated apply to couplings with the above hub borings at an ambient temperature of 23 °C. The values of radial, angular and axial displacement are maximum values which must not reach their maximum simultaneously while in operation.	
Pack quantity	1 pcs.	