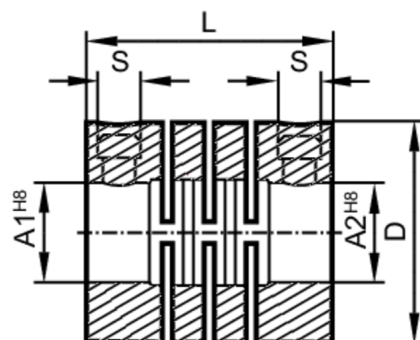


E60193



Coupling for encoders

Coupling 25-10-10-24-SV



Mechanical data

Weight	[g]	18.6
Dimensions	[mm]	Ø 25 / L = 24
Material		PA 6.6; stainless steel (1.4404 / 316L)
External diameter D	[mm]	25
Inside diameter A1	[mm]	10
Inside diameter A2	[mm]	10
Length L	[mm]	24
Clamp screw	[mm]	M4
Max. revolution, mechanical [U/min]		10000
Max. axial shaft misalignment [mm]		± 0,2
Max. radial shaft misalignment [mm]		± 0,3
Max. angular displacement [°]		± 3,0

Remarks

Remarks	The data indicated apply to couplings with the above hub borings at an ambient temperature of 23 °C. The values of radial, angular and axial displacement are maximum values which must not reach their maximum simultaneously while in operation.
Pack quantity	1 pcs.