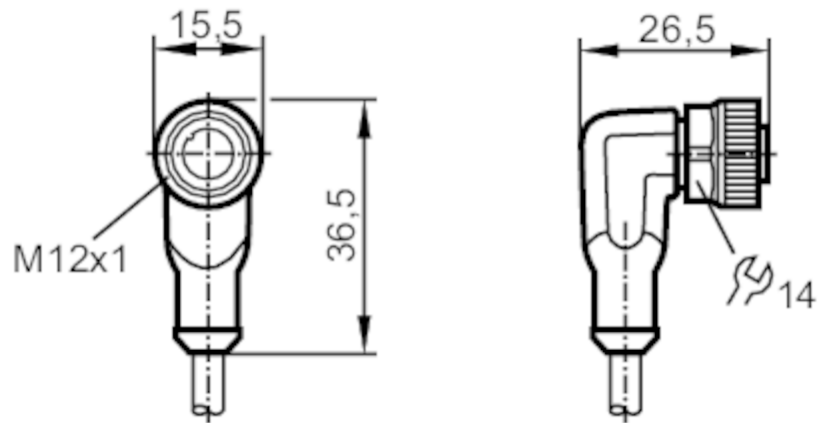


# EVC698



## Female cordset

ADOAH040MSS0015K04



### Application

System	Free from silicone; Halogen-free; gold-plated contacts; screened cable; Drag chain suitability
Free from silicone	yes

### Electrical data

Operating voltage [V]	< 50 AC / < 60 DC
Protection class	III
Max. current load total [A]	4

### Operating conditions

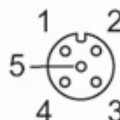
Ambient temperature [°C]	-25...90
Note on ambient temperature	cULus: ...75
Ambient temperature (moving) [°C]	-25...90
Note on ambient temperature (moving)	cULus: ...75
Protection	IP 65; IP 67

# EVC698



## Female cordset

ADOAH040MSS0015K04

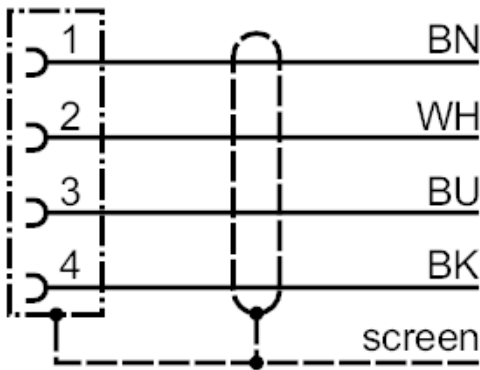
Mechanical data		
Weight	[g]	603.7
Dimensions	[mm]	26.5 x 15.5 x 36.5
Material	housing: TPU (urethane) orange; sealing: FKM	
Material nut	brass, nickel-plated	
Drag chain suitability	yes	
Drag chain suitability	Bending radius for flexible applications	min. 10 x cable diameter
	Travel speed	max. 3.3 m/s for a horizontal travel length of 5 m and max. acceleration of 5 m/s²
	Bending cycles	≥ 2 Mio.
	Torsional strain	± 180 °/m
Remarks		
Pack quantity	1 pcs.	
Electrical connection		
Cable: 15 m, PUR, Halogen-free, black, Ø 4.9 mm, screened; 4 x 0.34 mm² (42 x Ø 0.1 mm )		
Electrical connection - Socket		
Connector: 1 x M12, angled; Locking: brass, nickel-plated; Contacts: gold-plated; Tightening torque: 0.6...1.5 Nm; Shielded connection cable: shield connected		
		



Female cordset

ADOAH040MSS0015K04

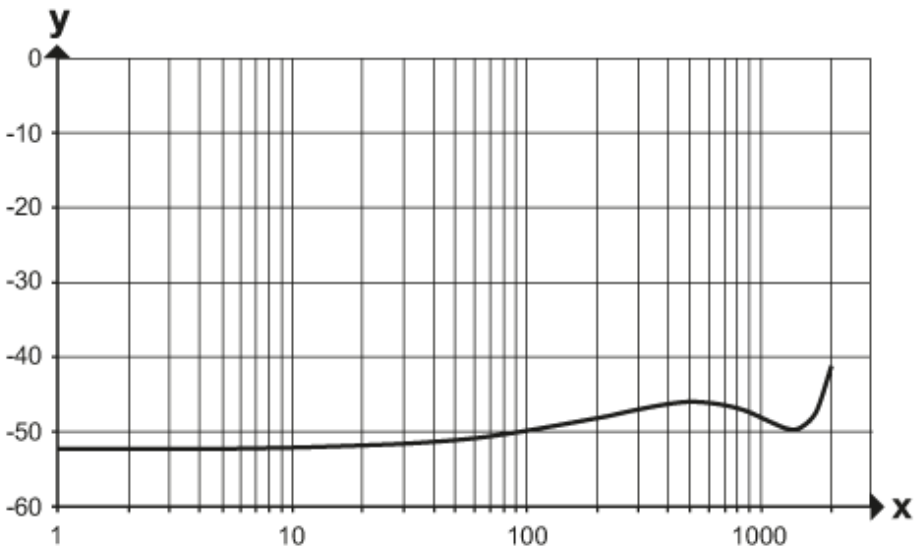
Connection



	Core colors :
BK =	black
BN =	brown
BU =	blue
WH =	white

Diagrams and graphs

Shielding characteristics



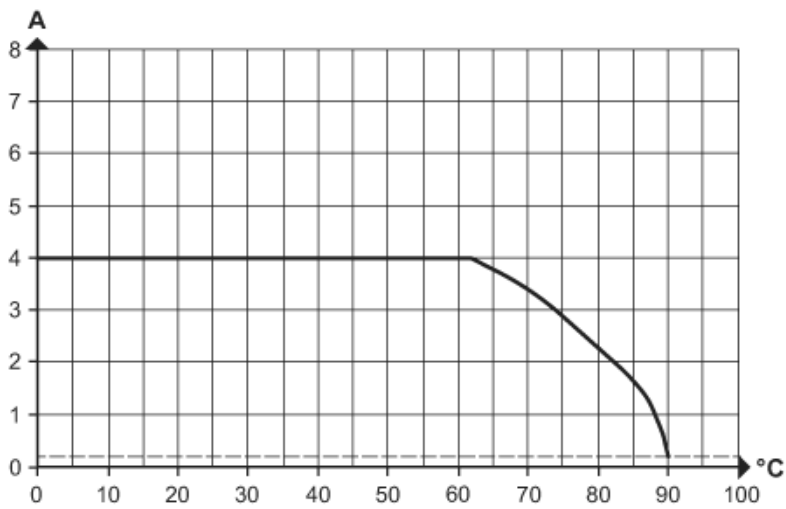
x Frequency (MHz)  
y Shielding characteristics (dB)  
according to DIN EN 60512-23-3

# EVC698



## Female cordset

ADOAH040MSS0015K04



Derating  $I_{max} \cdot 0.8$  DIN EN 60512-5-2

X Ambient temperature [°C]

Y Current [A]