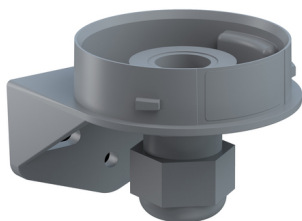


## EvoSIGNAL / EvoSIGNAL Accessories

**Mini Bracket Cable Gland GY**

**Part No.: 260.700.06**

**MECHANICAL DATA**

|                             |                           |
|-----------------------------|---------------------------|
| Length                      | 67 mm                     |
| Width                       | 62 mm                     |
| Height                      | 51 mm                     |
| Diameter                    | 62 mm                     |
| Materials                   | PC/ABS                    |
| Housing colour              | Grey                      |
| Protection category         | IP66                      |
| Cable entry                 | Screwed cable gland       |
| Cable entry minimum         | d = 8 mm                  |
| Cable entry maximum         | d = 12 mm                 |
| Tension relief              | Present (conforms to VDE) |
| Type of fixing              | Wall mounting             |
| Working temperature minimum | -30°C                     |
| Working temperature maximum | +60°C                     |
| Weight with packaging       | 39 g                      |
| Product weight              | 35 g                      |

**ELECTRICAL DATA**

|                  |   |
|------------------|---|
| Pollution degree | 3 |
|------------------|---|

**APPROVAL DATA**

|                             |     |
|-----------------------------|-----|
| Conforms with CE            | No  |
| WEEE                        | No  |
| Conforms with RED directive | No  |
| Conform with ATEX-directive | No  |
| Conforms with CCC           | No  |
| Conforms with UL            | No  |
| Conforms with FCC           | No  |
| Conforms with IC            | No  |
| EAC certificate available   | Yes |
| Conforms with AS-I          | No  |
| ICAO Certification          | No  |
| Conforms with GL            | No  |
| Conforms with RoHS CN       | No  |
| Conforms with VdS           | No  |

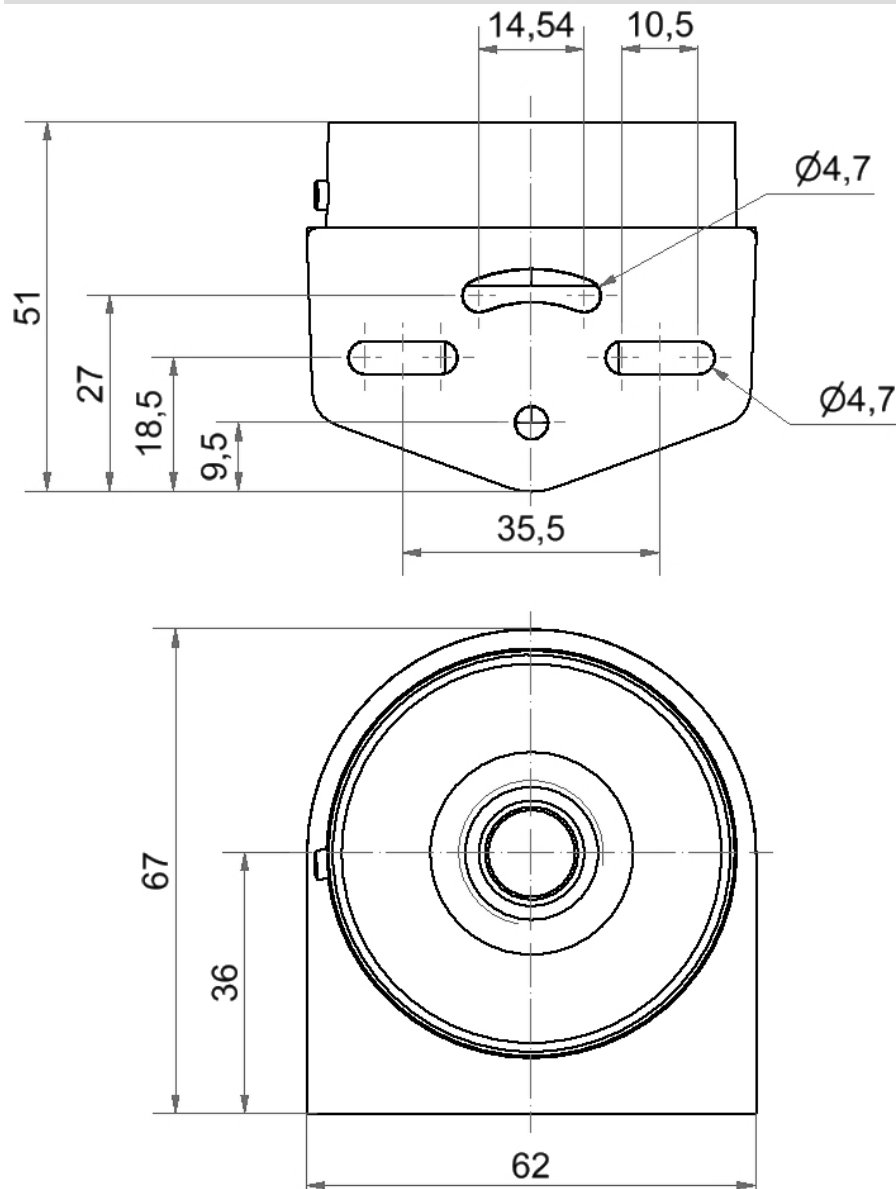


For additional installation and mounting information, refer to the appropriate user guide at [www.werma.com](http://www.werma.com). This printed copy is for information only and is subject to alteration.

EvoSIGNAL / EvoSIGNAL Accessories

## Mini Bracket Cable Gland GY

### DRAWING



For additional installation and mounting information, refer to the appropriate user guide at [www.werma.com](http://www.werma.com). This printed copy is for information only and is subject to alteration.