

## 117F8

### 70 V LINE AUDIO TRANSFORMER

- Couple 8ohm speakers to 70volt line outputs of amplifiers.
- Up to 5 power tap levels available
- Primary taps marked in watts (no calculation necessary), to match speaker power.
- Frequency response 100Hz. to 9Khz. ( $\pm 2$  db. reference @1 KHz.)
- Distortion is less than 2.0% @ 100 Hz. at maximum power.
- All models have solder lugs, also suitable for slip on jumper connections.
- Total power requirements of speakers should not exceed the rated power of each transformer or rated power of the amplifier.

### ELECTRICAL SPECIFICATIONS

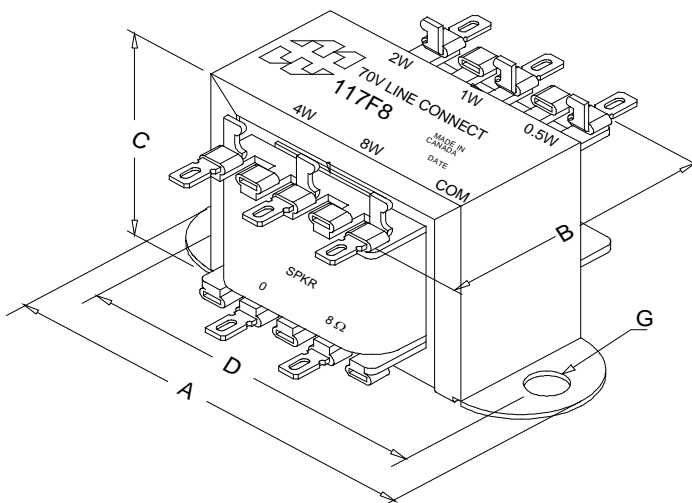
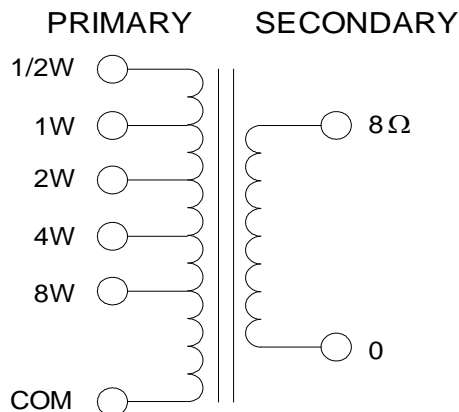
Characteristics	Typical
System Voltage	70V
Power Rating	8 Watts
Insertion Loss	<2dB
<b>DCR</b>	
COM - $\frac{1}{2}$ W	142 $\Omega$ TYP
Input	0.31 $\Omega$ TYP
<b>INDUCTANCE/IMPEDANCE</b>	
@1.0 KHz, 1V OC	
COM - $\frac{1}{2}$ W	4.92H / 30.1K $\Omega$
COM - 1W	2.60H / 15.80K $\Omega$
COM - 2W	1.37H / 8.34K $\Omega$
COM - 4W	757.5mH / 4.47K $\Omega$
COM - 8W	420mH / 2.45K $\Omega$
Input	10.06mH / 47.9 $\Omega$
<b>LEAKAGE INDUCTANCE</b>	
@1.0 KHz, 1V SC	
$\frac{1}{2}$ W/ 8W	188.5mH / 54mH
Dielectric Strength	500VRMS
Temperature Range	-40 To 105°C

### TEST CONDITIONS

Measurement instruments:  
 Hp4192a impedance analyzer Keithley 2002 DVM  
 D scope series iii audio analyzer Hp3456a DVM

\* All graphs input level 27dBm.

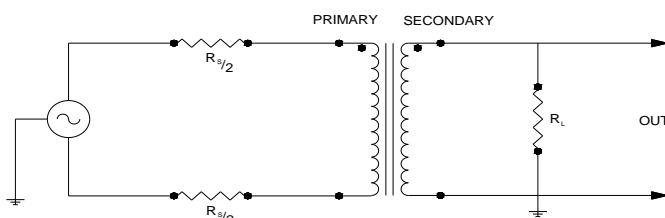
\*\*The results are typical and are subject to normal manufacturing and electrical tolerances.



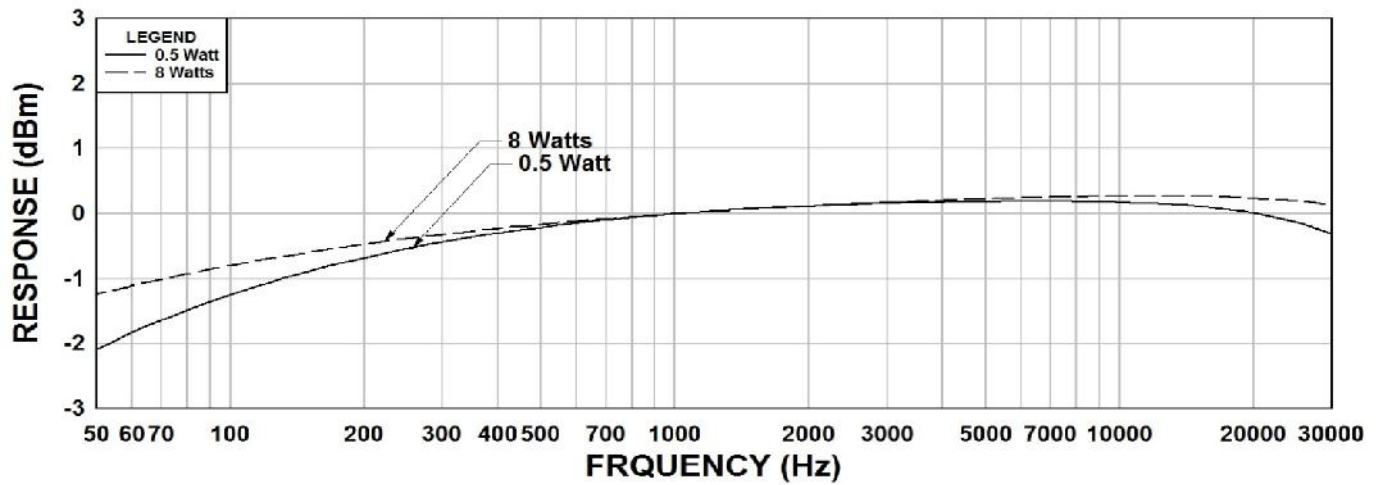
### Dimensions

A	3.250" $\pm 0.063$	D	2.813" $\pm 0.063$
B	2.239" REF	G	0.187" $\pm 0.015$
C	2.0 MAX		

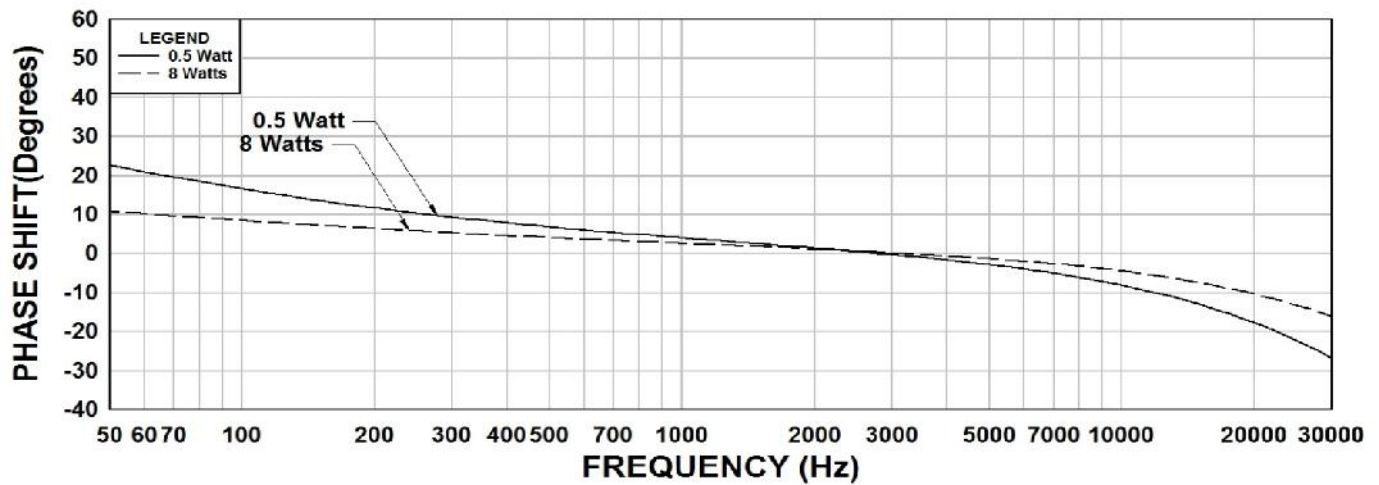
### TYPICAL TEST CIRCUIT



### 117F8 Frequency Response 0.5W & 8W



### 117F8 Phase Shift 0.5W & 8W



### 117F8 THD+N 0.5W & 8W

