

Single-Gang Non-Metallic Gangable Floor Box Kits

Economical, convenient way to add receptacles in a concrete pour in commercial installations.

FEATURES AND BENEFITS

- Build the box you need; use the single gang box 'as shipped' or lock them together to build a two- or three-gang box, then pick the cover/frame kit that fits.
- No water intrusion; devices are protected when not in use.

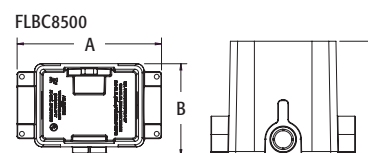
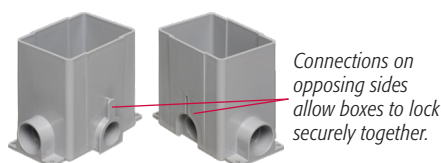


FLBC8500



FLBC8502

CATALOG NUMBER	UPC/DCI/NAED MFG #018997	DESCRIPTION	UNIT PKG	STD PKG	DIM A	DIM B	DIM C
FLBC8500	22950	Single-gang Gangable Box kit, (2) built-in 1-1/4" hubs	1	5	7.522	4.802	6.000
FLBC8502	22949	Single-gang Gangable Box kit, (2) built-in 2" hubs	1	5	7.832	4.802	6.000



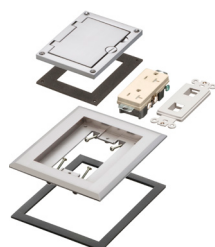
FLBC8500 includes concrete box/mud cover, (2) 3/4" conduit bushings and (2) blank plugs* that fit the 1-1/4" hubs (*w/ knockout for 1" conduit). **FLBC8502** includes concrete box/mud cover and (2) blank plugs* for the 2" hubs (*w/ knockout for 1-1/2" conduit). Also included are (2) conduit bushings ready for use with 1-1/4" conduit. These bushings accommodate the (2) supplied 3/4" conduit bushings.

Metallic Gangable Floor Box Cover/Frame Kits

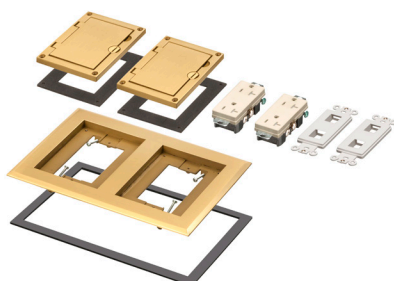
Cover/Frame kits for FLBC8500 and FLBC8502 gangable concrete boxes.

FEATURES AND BENEFITS

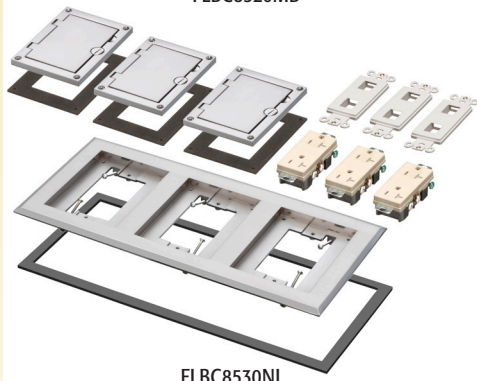
- Gasketed frame mounts to the box with supplied screws; plastic covers with gaskets then attach to the frame.
- No water intrusion; devices are protected when not in use.



FLBC8510NL



FLBC8520MB



FLBC8530NL

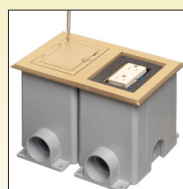
CATALOG NUMBER	UPC/DCI/NAED MFG #018997	DESCRIPTION	UNIT PKG	STD PKG	DIM A	DIM B	DIM C	DIM D
SINGLE-GANG								
FLBC8510MB	22953	Brass	1	1	6.094	5.006	.750	.185
FLBC8510NL	22954	Nickel-plated	1	1	6.094	5.006	.750	.185
TWO-GANG								
FLBC8520MB	22955	Brass	1	1	6.094	9.288	.750	.185
FLBC8520NL	22956	Nickel-plated	1	1	6.094	9.288	.750	.185
THREE-GANG								
FLBC8530MB	22957	Brass	1	1	6.094	13.546	.750	.185
FLBC8530NL	22958	Nickel-plated	1	1	6.094	13.546	.750	.185



KITS INCLUDE...

1, 2, or 3-gang frame, flip lid covers with gaskets, 20A decorator-style receptacles, gaskets, low voltage inserts, installation screws

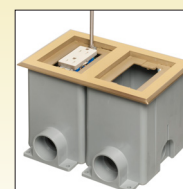
INSTALLATION INSTRUCTIONS



After building desired box, attach cover frame to boxes with the screws provided.



Install desired devices (screws provided).



Install cover insert gaskets in both gangs, then add the covers.