

BULLET® Quick connect™ liquidtight fitting

For liquidtight flexible nonmetallic conduit Type B and tubing



Bullet® Quick Connect™ fitting allows for a fast and effective installation, greatly speeding up the process!

Features & benefits

- Single-piece fitting (no locknut required)
- Quick and easy installation without access to the inside
- Corrosion resistant
- Connector assembles to conduit without disassembly
- Provides a double sealing action
- Swivel mechanism allows for a fast and easy conduit installation
- Elongated gland nut profile designed to provide additional strain relief for 90° pull and an easy hand grip
- Connector ferrule designed to accept variations in conduit inside diameter and is tolerant of field conduit cuts
- Performance of fitting unaffected by exposure to detergents, cleaners, and sanitizers commonly encountered in food processing plants and typical industrial environment; also unaffected by cutting fluids, wiring pulling compounds and Marine environment
- Meets industry standards for cold impact

Applications

- A series of nonmetallic connectors designed to provide a liquidtight seal when terminating liquidtight nonmetallic conduit (U.L. Type B) to a box
- Ideal for panel builders and volume installers

Conforms to

- C.S.A. 22.2 No. 18.3-12
- ANSI/UL514B
- Watertight requirements of Type 4 and Type 4x

Material / Materials / Finishes

- Body Gland: Weather stabilized thermoplastic
- Friction washer
- Material Flammability rating: UL94-V2

Temperature range

- -18°C to +105°C (-2°F to +221°F)

Color

- Black
- Gray
- Light gray

Chemical resistance

- See publication TDS000081

Technical data



Part no.*	Trade size (in)	A ±0.015 (0.40)		B ±0.035 (0.90)		C ±0.015 (0.40) Across corners		D across flats		E min. throat dia.		Hole size max.		Hole size min.	
		(in)	(mm)	(in)	(mm)	(in)	(mm)	(in)	(mm)	(in)	(mm)	(in)	(mm)	(in)	(mm)
LT38P-QC series straight fittings															
LT38P-QC-X**	3/8	0.393	10.00	2.61	66.51	1.075	27.30	0.978	24.84	0.409	10.40	0.695	17.65	0.742	18.85
LT50P-QC-X	1/2	0.393	10.00	2.57	65.44	1.244	31.60	1.135	28.84	0.541	13.75	0.860	21.84	0.902	23.01
LT75P-QC-X	3/4	0.393	10.00	2.81	71.55	1.437	36.50	1.327	33.70	0.700	17.80	0.700	17.80	1.141	28.98
LT100P-QC-X	1	0.393	10.00	3.03	77.16	1.772	45.00	1.642	41.70	1.642	41.70	0.954	24.25	1.406	35.71

Note: Product must be installed in accordance with applicable national and local electrical codes.

* Replace the "X" of the part number by one of the following:

B = black (RAL 9005), G = gray (RAL 7001), LG = light gray (RAL 7035)

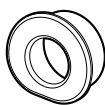
** UL component recognized

These connectors are Certified as components and intended to be used in electrical equipment, where the suitability is determined in the end use application

Removal tool

Product selection

Part no.	Standard size (NPT)
NPG-038-RT	3/8
NPG-050-RT	1/2
NPG-075-RT	3/4
NPG-100-RT	1



Front

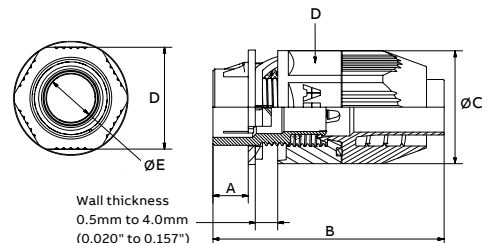


Back

Removal tool

- Push from inside the enclosure using this tool to easily remove the Bullet® quick connect™ liquidtight fitting
- Sold separately (Light grey plastic - RAL 7035)

Dimensions



Liquidtight flexible nonmetallic conduit fittings

Bullet liquidtight fittings for nonmetallic liquidtight conduit Type B and tubing.

Metallic Bullet fittings



Cat. no.	Fig.	Trade size (in.)	A±0.030 (0.80)	B±0.060* (1.50)		C±0.045 (1.15)		D	Thread NPT
			in. (mm)	in.	(mm)	in.	(mm)	in. (mm)	
LT38M	1	3/8	1.156 (29.4)	1.500	(38.1)	0.562	(14.3)	–	1/2-14
LT438M	2	3/8	1.156 (29.4)	1.962	(49.8)	0.562	(14.3)	–	1/2-14
LT938M	3	3/8	1.156 (29.4)	1.312	(33.3)	0.625	(15.9)	1.375 (34.9)	1/2-14
LT50M	1	1/2	1.375 (34.9)	1.562	(39.7)	0.562	(14.3)	–	1/2-14
LT450M	2	1/2	1.375 (34.9)	1.875	(47.6)	0.562	(14.3)	–	1/2-14
LT950M	3	1/2	1.375 (34.9)	1.437	(36.5)	0.625	(15.9)	1.562 (39.7)	1/2-14
LT75M	1	3/4	1.656 (42.1)	1.625	(41.2)	0.625	(15.9)	–	3/4-14
LT475M	2	3/4	1.656 (42.1)	2.125	(54.0)	0.562	(14.3)	–	3/4-14
LT975M	3	3/4	1.656 (42.1)	1.750	(44.4)	0.625	(15.9)	1.750 (44.4)	3/4-14
LT100M	1	1	1.875 (47.6)	2.062	(52.4)	0.750	(19.0)	–	1-11 1/2
LT4100M	2	1	1.875 (47.6)	2.250	(57.1)	0.812	(20.6)	–	1-11 1/2
LT9100M	3	1	1.875 (47.6)	1.937	(49.2)	0.812	(20.6)	2.187 (55.5)	1-11 1/2
LT125M	1	1 1/4	2.375 (60.3)	2.500	(63.5)	0.812	(20.6)	–	1 1/4-11 1/2
LT4125M	2	1 1/4	2.375 (60.3)	2.750	(69.8)	0.812	(20.6)	–	1 1/4-11 1/2
LT9125M	3	1 1/4	2.375 (60.3)	2.500	(63.5)	0.812	(20.6)	2.750 (69.8)	1 1/4-11 1/2
LT150M	1	1 1/2	2.750 (69.8)	2.687	(68.2)	0.812	(20.6)	–	1 1/2-11 1/2
LT4150M	2	1 1/2	2.750 (69.8)	2.750	(69.8)	0.812	(20.6)	–	1 1/2-11 1/2
LT9150M	3	1 1/2	2.750 (69.8)	2.812	(71.4)	0.812	(20.6)	2.937 (74.6)	1 1/2-11 1/2
LT200M	1	2	3.468 (88.1)	3.062	(77.8)	0.812	(20.6)	–	2-11 1/2
LT4200M	2	2	3.468 (88.1)	3.875	(98.4)	0.875	(22.2)	–	2-11 1/2
LT9200M	3	2	3.468 (88.1)	3.500	(88.9)	0.875	(22.2)	3.437 (87.3)	2-11 1/2

01 Figure 1
02 Figure 2
03 Figure 3

Suggested specification:
Where liquidtight flexible nonmetallic conduit (UL and CSA Type B) or liquidtight flexible nonmetallic tubing is terminated to a box or enclosure, the metallic fittings used shall be able to be installed without disassembly and provide positive installation criteria. In the installed condition, the fitting must provide a seal, meeting watertight requirements of NEMA Type 4 and Type 4X with

conduit and NEMA Type 4 enclosures with tubing. Installed fittings shall be as manufactured by ABB, LT38M series.

Material:
Body/gland: Steel/malleable iron
Insert: Nylon

