

Straight blade receptacle families

High performance receptacles for the most demanding of environments

Arrow Hart's offering of straight blade receptacles cover the full range of hospital, industrial, construction and commercial grades along with special solutions like corrosion resistant, severe duty insulated and watertight straight blade receptacles for complex environments



Hospital grade straight blade receptacles

Arrow Hart's feature rich line of hospital grade receptacles have been designed to meet and exceed the demanding requirements of UL498 and federal specification WC-596 to provide a consistent means of connectivity where downtime can be critical.



Industrial grade straight blade receptacles

Designed from the inside out, these receptacles meet and exceed the UL498 and federal specification WC-596 standards to withstand the most abusive environments and excel in applications that demand the highest levels of performance.



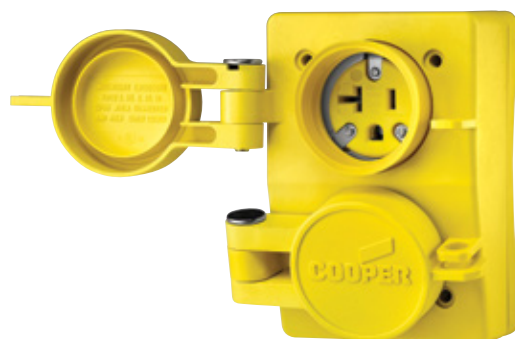
Commercial & construction grade straight blade receptacles

Engineered for safe, reliable performance, these UL498 and federal specification WC-596 listed devices provide maximum durability in a wide variety of applications while providing installation efficiency to help finish the job on time.



Industrial grade corrosion resistant straight blade receptacles

Built to defy the potentially damaging effects of moisture, humidity and other corrosive elements, Arrow Hart corrosion resistant devices are listed to UL498 and federal specification WC-596 to provide a dependable connection regardless of the application environment.



Industrial grade watertight straight blade receptacles

Listed to UL498, Arrow Hart watertight straight blade receptacles utilize advanced materials and innovative design features to make them the best choice for superior performance in harsh, wet location environments.

Arrow Hart straight blade specifiers' table

Feature group	Premium hospital grade	Single premium hospital grade	Isolated ground premium hospital grade	Single isolated ground premium hospital grade	Hospital grade	Premium industrial grade	Premium industrial grade decorator	Single premium industrial grade	Isolated ground premium industrial grade	Single isolated ground premium industrial grade	Industrial grade	Industrial grade decorator	Const. grade
Product line	AH8200 AH8300 AH8400 AH8600 8262 8362	8210 8310 8410◇ 8610◇	IG8200 IG8300 IG8400◇ IG8262 IG8362	IG8210 IG8310	8200 8300 TR8200 TR8300*	AH5262 AH5362 AH5462 AH5662	6262 6362 6462 6662	5261 5361 5461 5661	AHIG5262 AHIG5362 AHIG5462 AHIG5662	IG5261 IG5361 IG5461 IG5661	AH5252 AH5352	6342	5262 5362 5462C 5662C TR5262* TR5362* TR6252* TR6362*
Contact design													
5-leaf line contact	•		•			•	•		•		•		
Triple-wipe line contact		•		•	•			•		•		•	•
Strap materials													
Brass mounting strap	•					•							
Steel mounting strap		•	•	•	•		•	•	•	•	•	•	•
Grounding system													
1-piece integral mounting strap	•					•							
Brass ground shunt			•	•			•		•	•	•		
Riveted ground contact		•			•			•				•	•
Body materials													
Impact & chemical resistant nylon face	•	•	•	•	•	•	•	•	•	•	•	•	•
Glass-filled nylon base	•		•			•	•	•		•	•		
Nylon base	•	•	•	•		•	•	•	•	•	•		
PVC base					•							•	•
Specialty features													
Screw terminal guards	•		•			•	•		•			•	
Back wire ground terminal	•		•			•	•		•			•	
Tri-combo screws	•	•	•	•	•	•	•		•	•	•	•	•
Screw-catch feature	•		•		•	•	•		•		•		•
*Tamper resistant					•								•
Certifications													
cULus instead of UL and CSA	•		•			•			•		•		
RoHS compliant	•	•	•	•	•	•	•	•	•	•	•	•	•

*Tamper resistant receptacles are cULus, Fed Spec and NOM. ◇Not NOM certified.
Compliances, specifications and availability are subject to change without notice.



Compliances, specifications and availability are subject to change without notice.

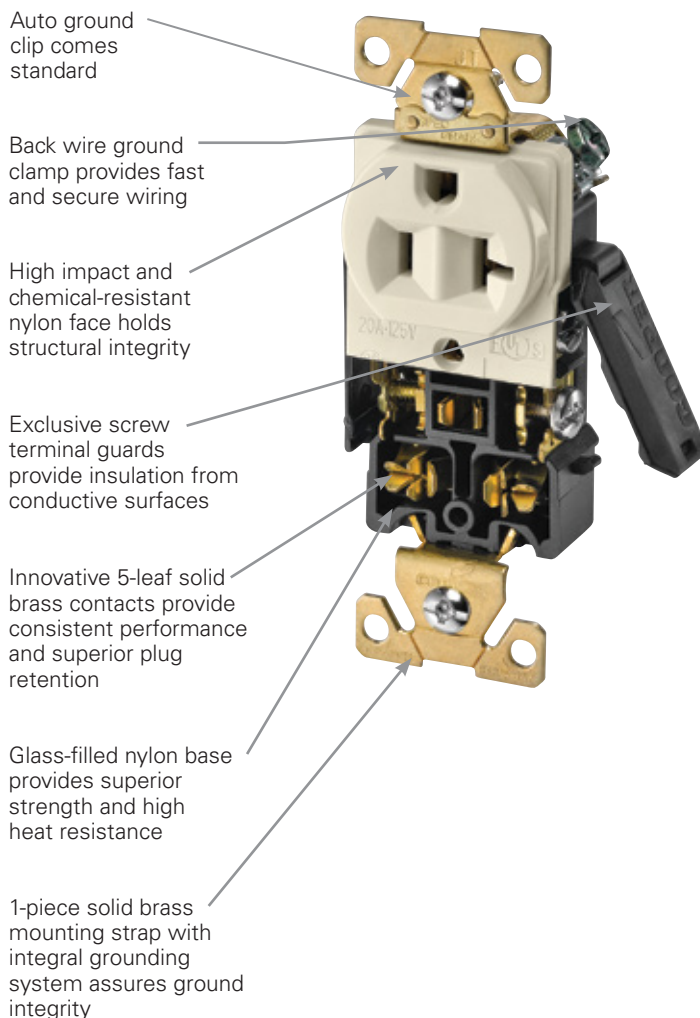
www.eaton.com
www.eaton.com/arrowhart

Industrial grade receptacles

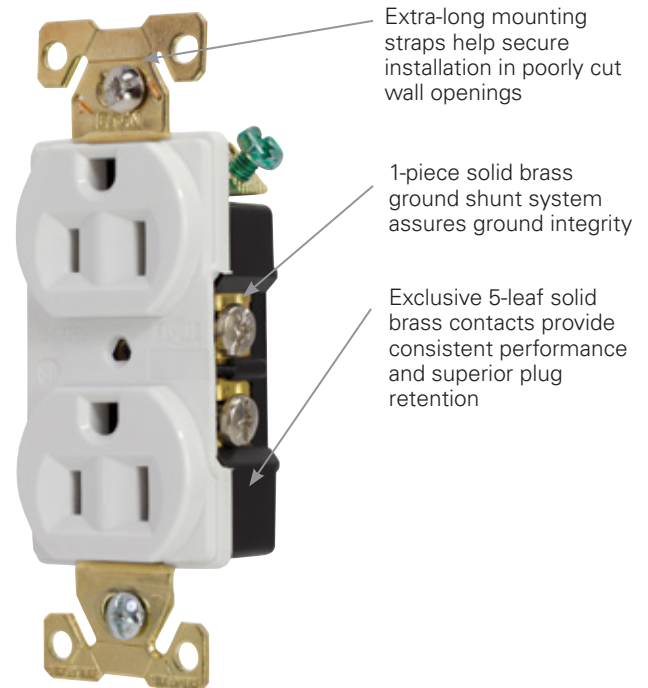
Arrow Hart industrial receptacles are best-in-class with unique features

These durable receptacles are designed from the inside out to provide innovative functionality throughout the product line and withstand the most abusive environments to provide a consistent means of reliable connectivity

Premium industrial grade AH5262, AH5362, AH5462, AH5662 features & benefits



Industrial grade AH5252, AH5352 features & benefits



Additional features & benefits

- Patented screw catch speeds wallplate installation
- Convenient built-in #10 and #12 AWG wire strippers
- Tri-combination head brass terminal screws are backed out and ready to wire
- Available in 15A & 20A duplex & single configurations, including isolated ground and ArrowLink modular styles

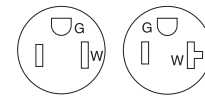
Compliances, specifications and availability are subject to change without notice.

www.eaton.com
www.eaton.com/arrowhart

Industrial grade straight blade receptacles

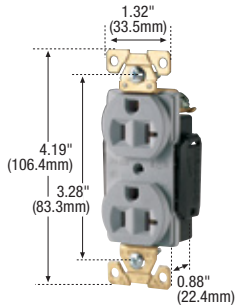
Product description

2-pole, 3-wire grounding
15A, 125V/AC;
20A, 125V/AC
NEMA 5-15R, 5-20R

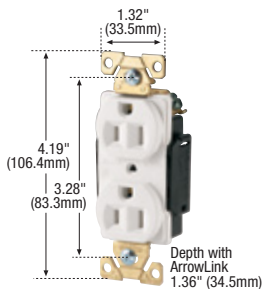


5-15R

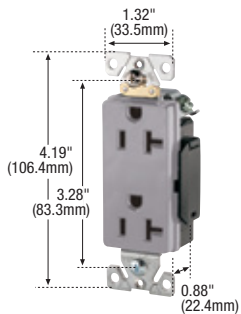
5-20R



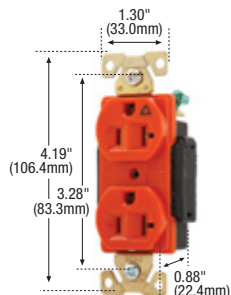
AH5362



AH5262_M

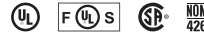


6362



AHIG5362

Premium industrial grade receptacles



Rating	A	V/AC	NEMA	Description	Color suffix	Catalog no.				
15	125	5-15R	Premium duplex receptacle, back & side wire	B, BK, GY, RD, V, W	□ AH5262__					
			Premium single receptacle, back & side wire	B, GY, RD, V, W	□ 5261__					
20	125	5-20R	Premium duplex receptacle, back & side wire	B, BK, GY, LA, RD, V, W	□ AH5362__					
			Premium single receptacle, back & side wire	B, BK, GY, RD, V, W	□ 5361__					

Premium decorator industrial grade receptacles



Rating	A	V/AC	NEMA	Description	Color suffix	Catalog no.				
15	125	5-15R	Premium decorator duplex receptacle, back & side wire	GY, RD, V, W	□ 6262__					
20	125	5-20R	Premium decorator duplex receptacle, back & side wire	BK, GY, RD, V, W	□ 6362__					

Isolated ground premium industrial grade receptacles



Rating	A	V/AC	NEMA	Description	Color suffix	Catalog no.				
15	125	5-15R	Premium IG duplex receptacle, back & side wire	GY, RD, RN, V, W	□ AHIG5262__					
			Premium IG single receptacle, back & side wire	RN	□ IG5261RN					
20	125	5-20R	Premium IG duplex receptacle, back & side wire	BK, GY, RD, RN, V, W	□ AHIG5362__					
			Premium IG single receptacle, back & side wire	RN, V	□ IG5361__*					

*Not Fed Spec

Color ordering information:

For ordering devices, include Catalog no. followed by the Color suffix: B (Brown), BK (Black), GY (Gray), LA (Light Almond), RD (Red), RN (Orange), V (Ivory), W (White)

B	BK	GY	LA	RD	RN	V	W
(Brown)	(Black)	(Gray)	(Lt. Almond)	(Red)	(Orange)	(Ivory)	(White)

Specification information: Premium industrial receptacles: A-29, ArrowLink premium industrial receptacles: A-36, Premium decorator industrial receptacles: A-29, Isolated ground premium industrial receptacles: A-34, ArrowLink isolated ground premium industrial receptacles: A-31, A-36

Compliances, specifications and availability are subject to change without notice.

➡ ArrowLink option available. Add "M" suffix to standard catalog number (example AH8300W, AH8300WM). For ordering information on ArrowLink & ArrowLink SPD connectors, see Page A-5

➡ Build-to-spec customizable devices - Page A-6

🇺🇸 Indicates NAFTA compliant - Page Q-32

🌱 RoHS compliant - Page Q-32

Industrial grade receptacles

Product description

2-pole, 3-wire grounding
 15A, 125V/AC; 15A, 250V/AC
 20A, 125V/AC; 20A, 250V/AC
 NEMA 5-15, 6-15, 5-20, 6-20

Device type	Industrial grade premium duplex receptacles: AH5262, AH5362, AH5462, AH5662 series	Industrial grade premium decorator duplex receptacles: 6262, 6362, 6462, 6662 series	Industrial grade premium single receptacles: 5261, 5361, 5461, 5661 series
Wiring type	Back & side wire	Back & side wire	Back & side wire
Testing & code compliance	<ul style="list-style-type: none"> Listed to UL498, file no. E15058 UL verified to Fed Spec WC-596G CSA certified to C22.2, no. 42, file no. 6914 (6233-01) NOM certified 	<ul style="list-style-type: none"> Listed to UL498, file no. E15058 UL verified to Fed Spec WC-596G CSA certified to C22.2, no. 42, file no. 6914 (6233-01) NOM certified 	<ul style="list-style-type: none"> Listed to UL498, file no. E15058 UL verified to Fed Spec WC-596G CSA certified to C22.2, no. 42, file no. 6914 (6233-01) NOM certified
Environmental specifications	Flammability: Meets UL94 requirements; V2 rated Temperature rating: -20°C to 70°C (-4°F to 158°F)	Flammability: Meets UL94 requirements; V2 rated Temperature rating: -20°C to 70°C (-4°F to 158°F)	Flammability: Meets UL94 requirements; V2 rated Temperature rating: -20°C to 60°C (-4°F to 140°F)
Electrical specifications	Dielectric voltage: Withstands 2000V per UL498 Current interrupting: Yes, at full-rated current Temperature rise: Max. 30°C (86°F) after 250 cycles of overload @ 200% of rated current (DC)	Dielectric voltage: Withstands 2000V per UL498 Current interrupting: Yes, at full-rated current Temperature rise: Max. 30°C (86°F) after 250 cycles of overload @ 200% of rated current (DC)	Dielectric voltage: Withstands 2000V per UL498 Current interrupting: Yes, at full-rated current Temperature rise: Max. 30°C (86°F) after 250 cycles of overload @ 200% of rated current (DC)
Mechanical specifications	Terminal accommodation: #14 - #10 AWG Voltage ratings: Permanently marked on device	Terminal accommodation: #14 - #10 AWG Voltage ratings: Permanently marked on device	Terminal accommodation: #14 - #10 AWG Voltage ratings: Permanently marked on device
Materials	Top housing: Nylon Bottom housing: Glass-filled nylon Strap: 0.05" thick brass Auto ground clip: Brass Line contacts: 0.031" thick 5-leaf brass Ground contact: Integral Terminal screws: #8-32 brass, neutral screw nickel plated Ground screw: #8-32 brass, green Screw terminal guards: PVC hinged doors	Top housing: Nylon Bottom housing: Glass-filled nylon Strap: 0.05" thick galvanized steel, 1-piece ground shunt Auto ground clip: Brass Line contacts: 0.031" thick 5-leaf brass Ground contact: 1-piece brass ground shunt Terminal screws: #8-32 brass, neutral screw nickel plated Ground screw: #8-32 brass, green Screw terminal guards: PVC hinged doors	Top housing: Nylon Bottom housing: Nylon Strap: 0.05" thick steel, zinc plated Auto ground clip: Phosphor bronze Line contacts: 0.037" thick triple wipe brass Ground contact: Riveted Terminal screws: #8-32 steel, brass plated, neutral screw nickel plated Ground screw: #8-32 steel, green Screw terminal guards: N/A