

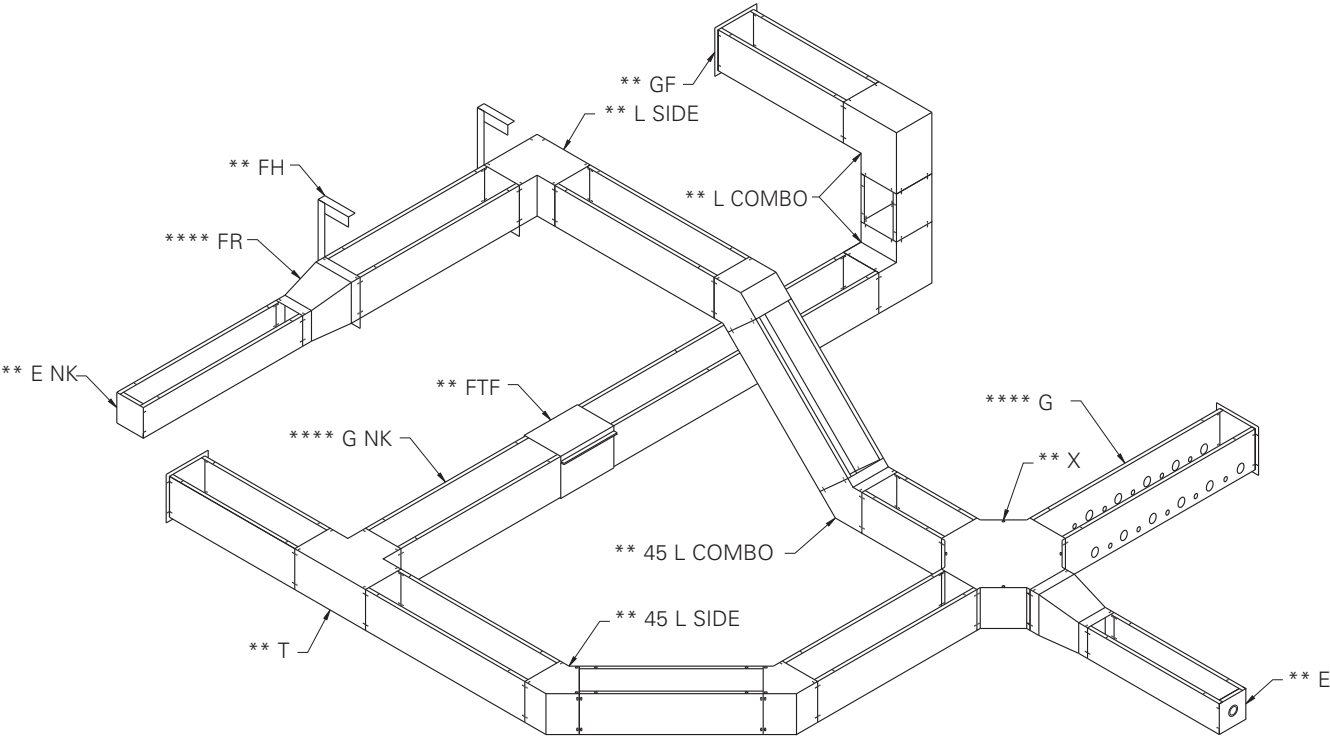
Enclosures You Want, When You Need Them

We are excited to announce the improved B-Line series electrical enclosure website that is dedicated to our full line of industrial and commercial B-Line series enclosures. The improved site is easier to navigate and includes the key tools and literature tied to helping you find the enclosures you want; in the time you need them.

And now, you can access all of our industrial and commercial enclosures, as well as wireway products, in CoSPECSM, our CAD, BIM, PDMS, and Graphics catalog. CoSPEC allows you to select, view and download native design content in nearly 100 different formats.

Log on today to see the latest enclosure information at www.eaton.com/enc

The screenshot displays the B-Line by Eaton website. At the top, the logo 'B-Line by EATON' is visible. Below it, a navigation bar includes links for COOPER, B-LINE, ABOUT US, PRODUCTS, SOLUTIONS, MARKETS, BRANDS, and RESOURCES. The 'PRODUCTS' link is highlighted. A breadcrumb trail reads: Cooper Industries > B-Line > Products > Electrical Enclosures & Wireway. On the left, there is a search bar with the text 'SEARCH' and a magnifying glass icon, with a link to 'Advanced Search' below it. The main heading is 'Electrical Enclosures & Wireway'. Below this, there is an image of a grey electrical enclosure. To the right of the image is a dark box labeled 'CoSPEC' with the text: 'Specifier center to select, view and download engineering data and drawings for B-Line products in up to 100 different formats.' Below the image and text, the heading 'Enclosures You Want – When You Need Them' is followed by a paragraph: 'At B-Line, we offer solutions to meet our customer requirements. From standard stock product to modified and custom enclosures, our Enclosure Experts are available to help you choose the enclosures you want – when you need them.' Below this paragraph are five expandable sections, each with a plus sign and a title: '+ About Cooper B-Line Enclosures', '+ What's New in NEMA Enclosures at Cooper B-Line', '+ Technical Information & Product Selection Tools', '+ Literature & Resources', and '+ Enclosure & Wireway Product Overview'. Below these sections is a dark box labeled 'COSPEC SPECIFIER CENTER'. Inside this box, there is a paragraph: 'At B-Line, our goal is to be a leading provider of information and resources to design and engineering professionals engaged in the design, construction, and maintenance of engineered MEP&T facility subsystems globally. That is why we developed the CoSPEC Specifier Center - a one-stop design resource for B-Line products.' This is followed by another paragraph: 'CoSPEC is packed with features like the new CAD / BIM / PDMS / Submittal catalog which offers the ability to select and view Cooper B-Line products in 2D and 3D. Then, with a couple of clicks, just as easily download design content in one of nearly 100 different CAD, BIM, PDMS, and graphics formats.' At the bottom of this section is a link: 'Visit CoSPEC Specifier Center'. Below the 'COSPEC SPECIFIER CENTER' section is a dark box labeled 'SEARCH PRODUCTS'. Below this box is a text input field with the placeholder text 'Select from the following product attributes...' and a dropdown arrow icon.



This drawing is for illustration purposes only. It depicts how most B-Line series Type 1 screw cover wireway straight sections and fittings could be used in an actual wireway run. Covers have been omitted in many instances to more clearly show the lay-in feature. Straight sections and fittings can be combined in many different configurations to accommodate any wiring application. The nomenclature depicts Type 1 screw cover wireway in ANSI 61 gray painted steel. In addition, we also offer Type 1 galvanized screw cover wireway, Type 1 Quick-Connect hinge cover wireway, Type 3R wireway, NEMA 12 and NEMA 4/4X feed-through wireway, and NEMA 12 lay-in wireway.

NOMENCLATURE

**** FR	Reducer	** GF	End flange
**** G	Straight section with knockouts	** L COMBO	90° Elbow combo opening
**** G NK	Straight section without knockouts	** L SIDE	90° Elbow side opening
** E	End with knockouts	** 45 L COMBO	45° Elbow combo opening
** ENK	End without knockouts	** 45 L SIDE	45° Elbow side opening
** FH	Hanger	** T	Tee
** FTF	Telescopic fitting	** X	Cross

**** Specify height x depth x length

** Specify height x depth

Type 1, 3, & 3R Enclosures

Panel Enclosures Type 1 Small Data Sheet

Type 1, 3, & 3R Enclosures



Application

- Houses electrical controls and instruments in an environment which does not require oil or dust tight specifications
- Protects against contact with enclosed equipment

Standards

- UL 50 listed, Type 1
- CSA C22.2 No. 40 certified, Type 1
- Conforms to NEMA standard for Type 1

Finish

- Wash and phosphate undercoat
- ANSI 61 gray polyester powder finish

Accessories

- Panels
- Terminal blocks
- Type 1 flush lock
- Touch-up paint
- #8-32 self tapping screw (10168)
- See Accessories section

Construction

- Enclosure and cover are fabricated from (16) gauge steel
- Enclosure body has mounting holes on the back which are accessible with or without the optional panel installed
- Cover is secured to the body with a continuous hinge on one side and flush latch on the opposite side
- Flush latch is designed to operate with either coin or screwdriver
- #10-32 provisions for mounting optional panel
- No knockouts
- Ground stud provided on door

Discount Schedule: C2

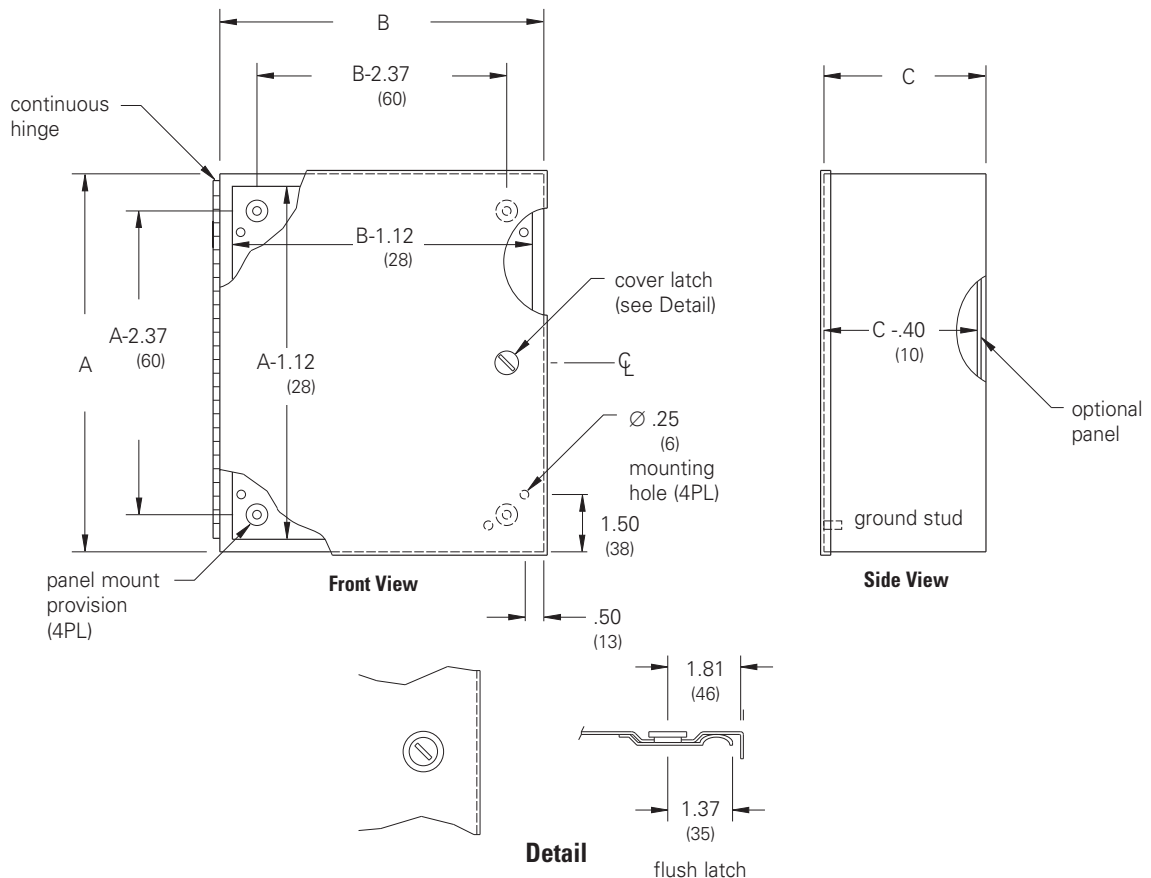
Subclass: D70

Notes: We can provide special sizes, finishes and other modifications. Consult the factory for your special requirements.

Panel Enclosures Type 1 Small

Illustration Sheet and Catalog Number

Enclosure Catalog Number	Enclosure Size Height x Width x Depth A x B x C		Panel Catalog Number		Panel Size	
	in.	mm	Solid	Perforated	Height in.	Width mm
664-1	6.00 x 6.00 x 4.00	152 x 152 x 102	N66P	N66PP	4.25 x 4.25	108 x 108
864-1	8.00 x 6.00 x 4.00	203 x 152 x 102	N86P	N86PP	6.25 x 4.25	159 x 108
884-1	8.00 x 8.00 x 4.00	203 x 203 x 102	N88P	N88PP	6.25 x 6.25	159 x 159
1084-1	10.00 x 8.00 x 4.00	254 x 203 x 102	N108P	N108PP	8.25 x 6.25	210 x 159
10104-1	10.00 x 10.00 x 4.00	254 x 254 x 102	N1010P	N1010PP	8.25 x 8.25	210 x 210
12104-1	12.00 x 10.00 x 4.00	305 x 254 x 102	N1210P	N1210PP	10.25 x 8.25	260 x 210
12124-1	12.00 x 12.00 x 4.00	305 x 305 x 102	N1212P	N1212PP	10.25 x 10.25	260 x 260
14124-1	14.00 x 12.00 x 4.00	356 x 305 x 102	N1412P	N1412PP	12.25 x 10.25	311 x 260
866-1	8.00 x 6.00 x 6.00	203 x 152 x 152	N86P	N86PP	6.25 x 4.25	159 x 108
886-1	8.00 x 8.00 x 6.00	203 x 203 x 152	N88P	N88PP	6.25 x 6.25	159 x 159
1086-1	10.00 x 8.00 x 6.00	254 x 203 x 152	N108P	N108PP	8.25 x 6.25	210 x 159
10106-1	10.00 x 10.00 x 6.00	254 x 254 x 152	N1010P	N1010PP	8.25 x 8.25	210 x 210
12106-1	12.00 x 10.00 x 6.00	305 x 254 x 152	N1210P	N1210PP	10.25 x 8.25	260 x 210
12126-1	12.00 x 12.00 x 6.00	305 x 305 x 152	N1212P	N1212PP	10.25 x 10.25	260 x 260
14126-1	14.00 x 12.00 x 6.00	356 x 305 x 152	N1412P	N1412PP	12.25 x 10.25	311 x 260
20126-1	20.00 x 12.00 x 6.00	508 x 305 x 152	N2012P	N2012PP	18.25 x 10.25	464 x 260
12128-1	12.00 x 12.00 x 8.00	305 x 305 x 203	N1212P	N1212PP	10.25 x 10.25	260 x 260
14128-1	14.00 x 12.00 x 8.00	356 x 305 x 203	N1412P	N1412PP	12.25 x 10.25	311 x 260



Notes: Dimensions are in inches. Millimeters shown are for reference only. Data subject to change without notice.