

Edison™ fuse links



General

Eaton's Cooper Power™ Edison™ fuse links, can be applied to a variety of applications requiring overcurrent protection of distribution systems and equipment. When properly coordinated with other overcurrent protective devices, sectionalizing to isolate faulted feeder branches or equipment can be accomplished. Edison fuse links are manufactured in a variety of styles, link speeds, and voltage ratings to ensure effective system coordination and overcurrent protection. They are available in non-removable buttonhead, and open-link styles.

All Eaton's Cooper Power series expulsion fuse link designs were tested in accordance with IEEE Std C37.41™ and IEEE Std C57.42™ standards, and IEC Standard 60282-2. Data from these tests have been utilized to plot the time current characteristics (TCC) for each fuse rating. Publication of minimum melting and total clearing TCCs certifies compliance with testing fuse links in accordance with these standards.



Powering Business Worldwide

Edison fuse links

Edison fuse links are manufactured in removable and non-removable buttonhead designs for use in open or enclosed distribution cutouts. Standard links are usable where the system voltage is 27 kV or less. For higher voltages, Edison fuse links are available for systems up to 38 kV.

In addition, Eaton provides open-link (STF) designs for use in open-link style distribution cutouts. A wide variety of open-links are available for system voltage at 15 kV or less. Edison fuse links are available for the higher system voltages through 18 kV.

Production quality assurance

To assure Edison fuse link reliability, all incoming material must pass rigid material specifications. Each completed Edison fuse link must pass a 15 lb. pull strength test (IEEE Std requires 10 lb.) and simultaneously pass a resistance check for element verification and quality of current interchanges.

Edison fuse link selection

Coordination of a power system requires selective operation of the fuse with other protective equipment such as reclosers, sectionalizers, power circuit breakers, and other fuses. All electrical equipment, such as transformers, switches, conductors, and those mentioned above can withstand various levels of current for different intervals of time. This ability is usually shown as a time-current characteristic and, generally, the device will permit high current for a short period of time and low current for longer periods of time without thermal or mechanical damage. Proper coordination and protection can only be accomplished when the system designer has a variety of fuses with a wide range of time current characteristics at his disposal.

The speed ratio (Table 2) of a fuse link design (for fuse links 100 A and below) can be determined by calculating the ratio between the current that melts the fuse in 0.1 second to the current that melts the fuse in 300 seconds. For fuse links rated greater than 100 A, the ratio is calculated between melting currents at 0.1 second and 600 seconds. Refer to Figure 2 for a comparison of minimum melt curves for Types K, T, N and S fuse links.

Current capacity

When properly applied, Edison fuse links can be operated continuously at their current rating. Certain links can be operated at levels higher than rating (see Table 3) without damaging the fusible element. Care must be exercised to assure that the maximum current the Edison fuse link carries does not exceed the continuous current rating of the cutout. It may be possible for the cutout to carry higher continuous current levels than its rating. In these cases, the cutout manufacturer should be consulted.

Additional continuous current-carrying capacity is particularly useful in applications where coordination requires greater load-carrying ability for specific time periods.

The melting characteristics curves of Edison fuse links are determined without preload and at an ambient operating temperature of 25 °C, as specified in IEEE Std C37.41™ standard and IEC 232-2.

Both preload and ambient operating temperatures can affect the melting characteristics of a fuse link.

While many applications can overlook these factors as negligible, they should be considered when the preload on the fuse link is at a high percentage level and/or when the fuse link may be exposed to a high ambient operating temperature.

Eaton application engineers are available to assist in the proper application of Edison fuse links for these operating conditions.

Packaging

All Edison links are packaged in individual bags and then packaged 5 to 25 per box depending on the fuse type and size. See Tables 4, 5, 6, and 7. The bags, as well as the box are marked with Catalog Number, Fuse Link Type, Amp Rating, and Date of Manufacture.

Table 1. Edison fuse link designs

System Rating	Fuse Type	Ampere Rating
27 kV Distribution	K (tin)	1-200
	K (silver)	6-200
	T (tin)	1-200
	T (silver)	6-200
	S	3-200
	H	1-8
(Open-type cutout)	N	2-200
	D	1-20
38 kV Distribution	EK	1-100
	ET	1-100
(Open-type cutout)	EH	1-5
15 kV Distribution	K	6-50
	T	6-50
(Open-link cutout)	H	1-8
	D	1-20

Table 2. Speed ratios*

Edison Fuse Link	Description	Average Speed Ratio
Distribution Systems through 27 kV		
Type K	Fast	6 through 8.1 (meets IEEE standards for a fast fuse)
Type N	Fast	6 through 11 (universal fuse link similar to Type K link)
Type T	Slow	10 through 13.1 (meets IEEE standards for a slow fuse)
Type H	Very Slow	6 through 18 (high-surge withstand characteristics)
Type D	Very Slow	7 through 46 (high-surge withstand characteristics)
Type S	Very Slow	15 through 20 (high-surge withstand characteristics)

* Figure 3 compares the speed ratio of Type K, Type N, type T, and Type S Edison links.

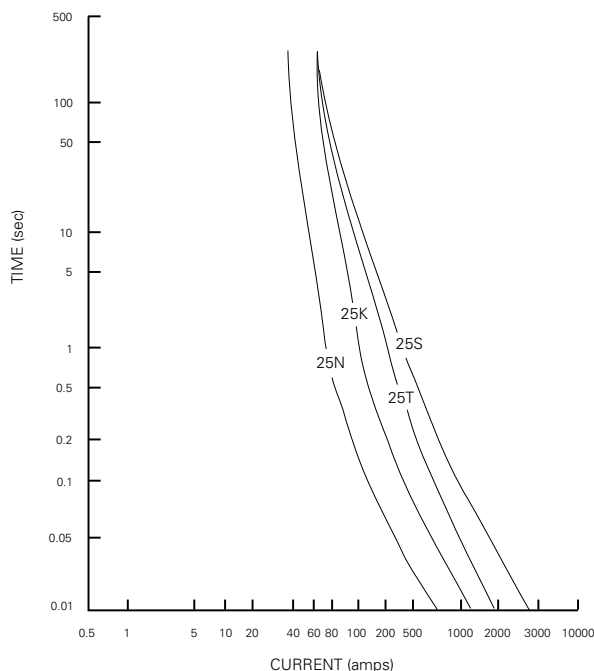
Distribution Systems through 38 kV**

Type EK	Fast	6 through 8.1
Type ET	Slow	10 through 13.1
Type EH	Very Slow	13 through 22 (high-surge fuse link)

** Use only in 38 kV rated cutouts without arc shortening rods.

Table 3. Continuous current ratings

Edison fuse link type	Allowable continuous current (% of rating)
K-tin	150
K-silver	100
N	100
H	100
D	100
T-tin	150
T-silver	100
S	100
EK	150
ET	150
EH	100

**Figure 2. Speed ratio comparisons, typical minimum melt curves Type K, T, N and S fuse links.**

Edison fuse link designs

Type K Links

Type K links are available with a silver fuse element or tin fuse element. Fuse links with a silver fuse element are available in ratings from 6-200 A in removable and non-removable buttonhead designs. Fuse links with a tin fuse element are available in ratings from 1-200A in the buttonhead design and from 6-50A in the open-link design.

Type T Links

Type T links are available with a silver fuse element or tin fuse element. Fuse links with a silver fuse element are available in ratings from 6-200A in removable and non-removable buttonhead designs. Fuse links with a tin fuse element are available in ratings from 1-200A in buttonhead design and from 6-50A in the open-link design.

Type T links exhibit the same overload characteristics as similarly rated Type K links at the 300- or 600-second points. The time-current characteristics differ below these points. Hence, the T link is slower at the high-current end than the same size K link.

Type H (High Surge) Links

Type H links are manufactured in ratings of 1, 2, 3, 5 and 8 A. Type H high-surge links are designed principally for primary fusing of small distribution transformers. These fuse links are designed specifically to provide the overload protection normally associated with fuse links of 1, 2, 3, 5, and 8 A, yet avoid unnecessary operation during short-time transient current surges such as those resulting from motor starting, lightning, or other causes.

The Type H links are constructed of multiple elements of specially selected alloys. In addition, open link designs are available for use in open link distribution cutouts.

Type D Links

Type D links are multiple-element links of specially designed alloys, and are available in ratings of 1 through 20 A. The D link is similar in design to the H high-surge link except it is slower at the high-current end. The superior surge withstand makes the probability of lightning damage very small, making the D link ideal for protection of small-to medium kVA distribution transformers. The link can be mounted in series and on the source side of the arrester, freeing the arrester for mounting directly on the transformer.

Type N Fuse Links

Type N links are manufactured in ratings of 2-200 A. Type N links conform to applicable IEEE® standards for mechanical interchangeability. They exhibit speed ratios approximately the same as the Type K link.

The Type N link features a tin fuse element.

Type S Links

Type S links are manufactured in ratings of 3-200 A with removable buttonheads. These links exhibit very slow time-current characteristics, making them ideal for protecting equipment from faults and overloads requiring a slow-speed, high-surge application. Type S links coordinate particularly well with reclosers.

Types EH, EK, and ET Links

These Edison fuse links are designed for use on 38 kV distribution systems. Types EH, EK, and ET Edison fuse links are manufactured in a non-removable buttonhead design with ratings from 1-5 A EH, 1-100 A EK and 1-100 A ET. These links exhibit the same time-current characteristics as similarly rated Types H, K, and T Edison fuse links and should only be used in 38 kV rated cutouts without arc shortening rods.

Additional options

Edison fuse links are also available with a number of options including those listed below. Contact your Eaton representative for information on availability and pricing.

Wedge adapter

Provides positive leader termination in distribution fuse cutouts designed with a wedge-type fuse leader connection.

Leader options

26-and 30-in. fuse link lengths and larger-diameter flexible leaders are available.

Construction features

Single element

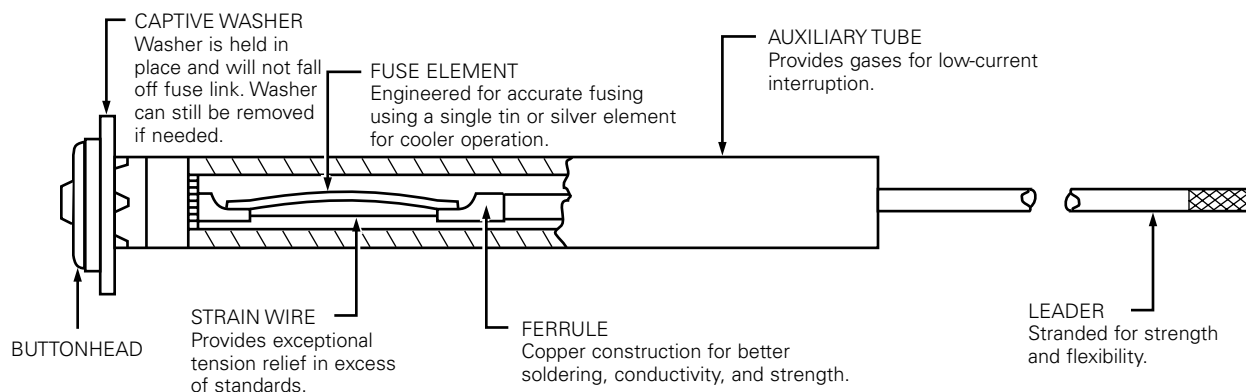


Figure 3. Typical type K, T, N, and H (8 A) fuse link construction.

Dual element

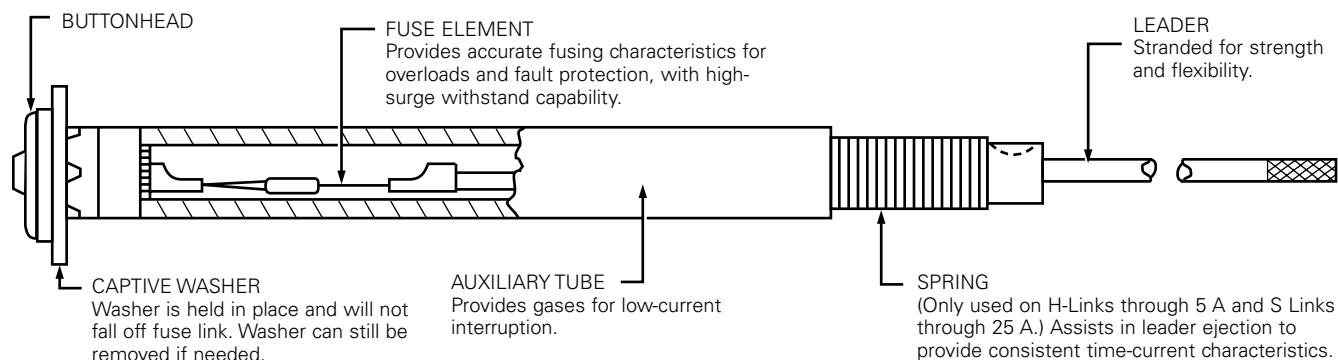


Figure 4. Typical type D, S, and H (1 A through 5 A) fuse link construction.

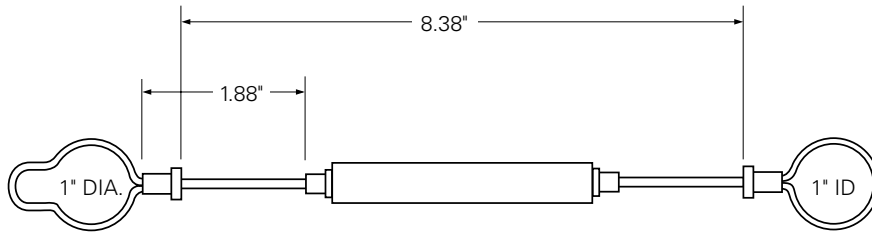
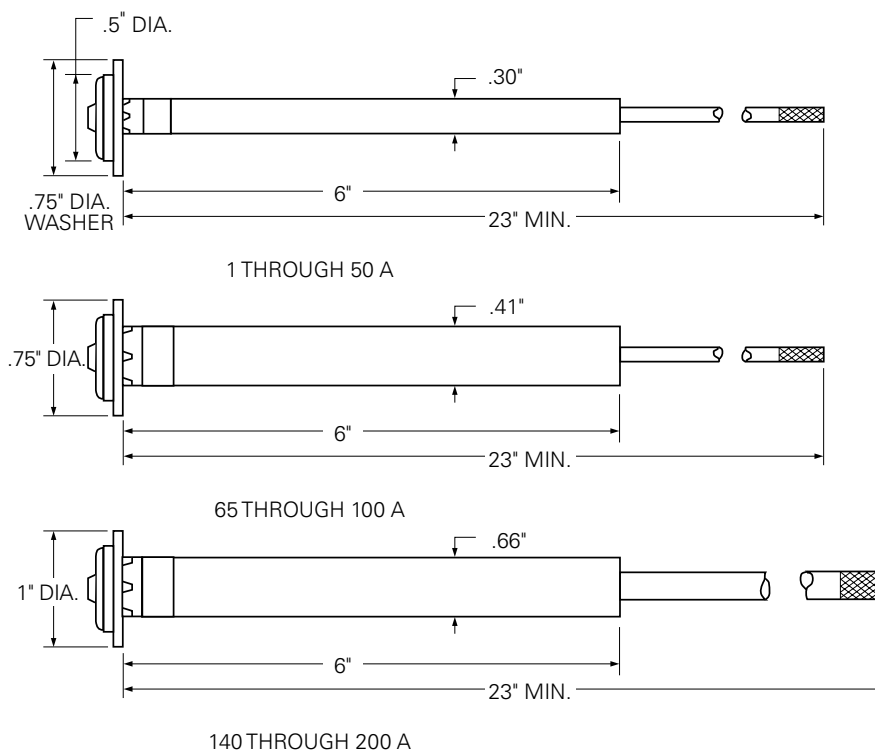


Figure 5. Dimensions of open-link Edison fuse link.



**Figure 6. Dimensions of typical Types D, H, K, T, N Edison fuse links
(Removable buttonhead shown; non-removable buttonhead dimensions are similar).**

Table 5. Non-removable links rated through 27kV**Non-removable buttonhead**

Current rating (Amps)	Type H	Type D	Type K (Silver)	Type N	Type K (Tin)	Type T (Tin)	Type T (Silver)	Standard box Qty
1	FL11H1	FL1D1			FL11K1	FL11T1		15
1.5		FL1D105						
2	FL11H2	FL1D2			FL11K2	FL11T2		
3	FL11H3	FL1D3			FL11K3	FL11T3		
4		FL1D4						
5	FL11H5	FL1D5		FL11N5	FL11K5	FL11T5		
6			FL12K6		FL11K6	FL11T6	FL12T6	
7		FL1D7						
8	FL11H8		FL12K8	FL11N8	FL11K8	FL11T8	FL12T8	
10		FL1D10	FL12K10	FL11N10	FL11K10	FL11T10	FL12T10	
12			FL12K12		FL11K12	FL11T12	FL12T12	
15		FL1D15	FL12K15	FL11N15	FL11K15	FL11T15	FL12T15	
20		FL1D20	FL12K20	FL11N20	FL11K20	FL11T20	FL12T20	
25			FL12K25	FL11N25	FL11K25	FL11T25	FL12T25	
30			FL12K30	FL11N30	FL11K30	FL11T30	FL12T30	
40			FL12K40	FL11N40	FL11K40	FL11T40	FL12T40	
50			FL12K50	FL11N50	FL11K50	FL11T50	FL12T50	10
60				FL11N60				
65			FL12K65		FL11K65	FL11T65	FL12T65	
75				FL11N75				
80			FL12K80		FL11K80	FL11T80	FL12T80	
85				FL11N85				5
100			FL12K100	FL11N100	FL11K100	FL11T100	FL12T100	
125				FL11N125				
140			FL12K140		FL11K140	FL11T140	FL12T140	
150				FL11N150				
200			FL12K200	FL11N200	FL11K200	FL11T200	FL12T200	

Notes:

1. Fuse links listed above are all 23" (584 mm) long. For 26" (660 mm) long fuse links replace digits "3 & 4" with 24. Example: FL11K1 is 23" long, FL24K1 is 26" long. Exception: Only available on Type L, N, K & T non-removable buttonhead fuse links.
2. For a fuse link with a heavy duty leader replace digits "3 & 4" with 25. Example: FL11K2 has a normal duty leader, FL25K2 has a heavy duty leader. Exception: Only available on Type K & T non-removable buttonhead tin fuse links.
3. For a fuse link with a 23" double leader replace digits "3 & 4" with 12. Example: FL11N125 has a single leader, FL12N125 has a double leader. Exception: Only available on Type N non-removable buttonhead fuse links.