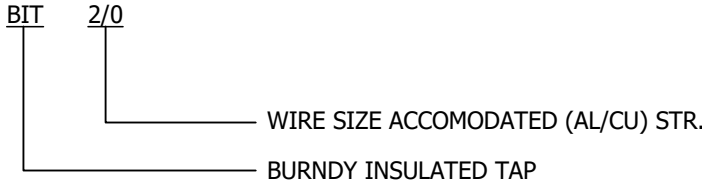
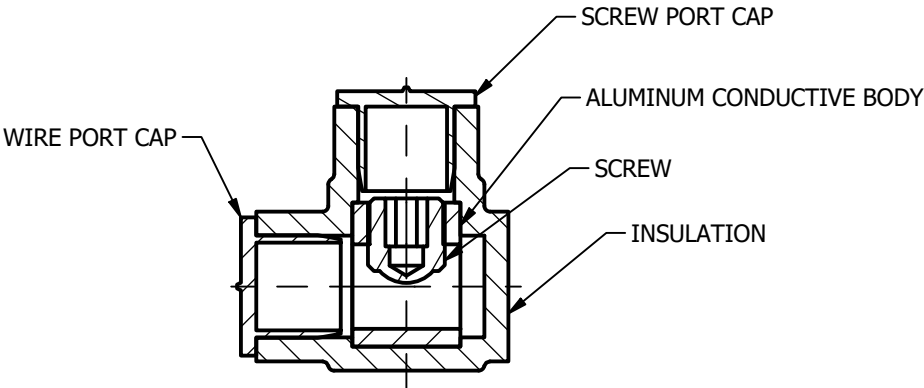
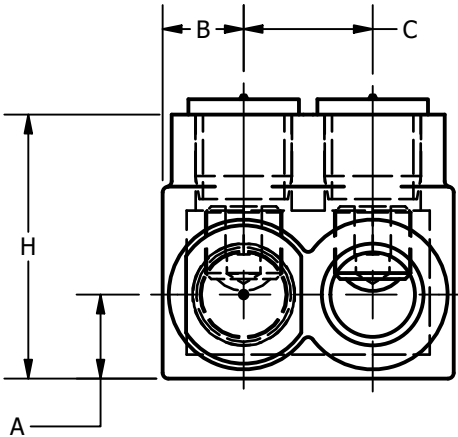
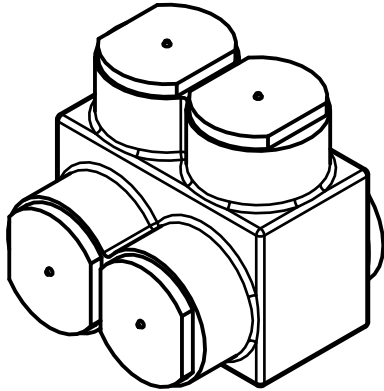
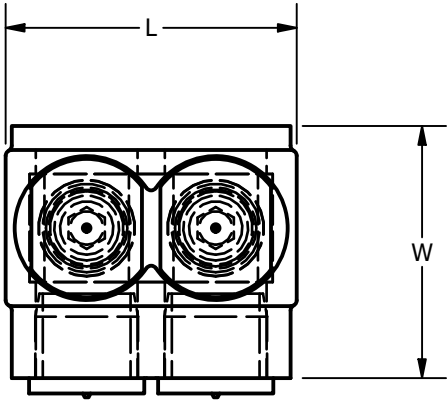


CATALOG NUMBER	ITEM NUMBER	WIRE RANGE	L	W	H	A	B	C	HEX KEY	STRIP LENGTH +/-1/32	TORQUE, IN-LBS	AMP RATING
BIT4	25003737	#14-#4 CLASS B, C	1.08	1.13	1.25	.44	.32	.44	1/8	9/16	35	85
BIT2/0	25003729	#14-2/0 CLASS B, C	1.52	1.31	1.38	.44	.42	.67	3/16	5/8	120	175
BIT250	25003693	#10-250 CLASS B, C	2.03	2.13	2.13	.58	.55	.94	5/16	15/16	275	255
BIT350	25003694	#10-350 CLASS B, C	2.22	2.38	2.50	.69	.66	.91	5/16	1 1/16	275	310
BIT600	25018848	#4-600 CLASS B, C	2.75	2.38	2.75	.81	.72	1.28	3/8	1 1/16	375	420
BIT750	25019663	#2-750 CLASS B, C	2.88	2.75	3.00	.90	.75	1.38	3/8	1 7/16	375	475

REV	DATE	DESCRIPTION	ECO	BY	C'H'K.
C	07/20/2020	REDRAW	53372	JL	TR



NOTES:

- DIMENSIONS IN BRACKETS [] ARE IN MILLIMETERS ROUNDED OFF TO THE NEAREST MILLIMETER, UNLESS OTHERWISE SPECIFIED AND ARE FOR REFERENCE ONLY.
- THIS DRAWING TO BE INTERPRETED PER ASME Y14.5M-2009.
- MATERIAL: BODY - TIN PLATED ALUMINUM
SCREW - CLEAR COATED ALUMINUM
INSULATION - PLASTISOL
CAPS - POLYETHOLENE
- OPERATING TEMPERATURE - -40°C TO 135°C.
- VOLTAGE RATING - 600 V.

6 AMPERAGE RATING - SEE TABLE.

7 NOT UL LISTED OR CSA CERTIFIED.

UL LISTED TO 486A-B, FILE E9498

CSA CERTIFIED TO C22.2, NO. 65, FILE 042860_C_000

FEATURES	BENEFITS
PLASTISOL COVERED AL 6060-T6 BODY	SAVES TIME, LOWERS INSTALLATION COST, ELIMINATES TAPING
CLEAR PLASTISOL	ALLOWS VISUAL CONFIRMATION THAT CONDUCTOR IS PROPERLY INSERTED
OXIDE-INHIBITOR IS PREFILLED	INHIBITS MOISTURE AND CONTAMINANTS FROM ENTERING THE CONTACT AREA
RANGE-TAKING IN BOTH CODE AND FLEX	REDUCES THE NUMBER OF CONNECTORS CARRIED IN INVENTORY
WIRE AND SCREW PORT COVERS	PROTECTS AGAINST CONTAMINATION AND ACCIDENTAL CONTACT OF ENERGIZED PARTS.

TO ORDER BURNDY® PRODUCTS CALL

UNITED STATES
1-800-346-4175 (LONDONDERRY, NH)

CANADA:
1-800-361-6975 (QUEBEC)
1-800-387-6487 (ALL OTHER PROVINCES)

FOR PRODUCT INFO: <http://www.burndy.com>

FULLY INSULATED DISTRIBUTION BLOCKS-UNITAP™

ITEM NO: SEE TABLE

CAT. NO:SEE TABLE

DRAWN BY: T.REYNOLDS 8/14/2014

CHECKER: T.REYNOLDS 8/27/2014

DSN APRVL: T.REYNOLDS 12/20/2015

MFG APRVL: --

QA APRVL: C. KOWALCZYK 12/20/2015

MKT APRVL: M.BAILLY 12/20/2015

PROD FAM: --

PROJECT #: LM15085

DOCUMENT TYPE: SALES

REL LEVEL: Released

BURNDY®

DRAWING NO

SC210991

SHEET 1 OF 15

REV

C