

TYPE CSWS

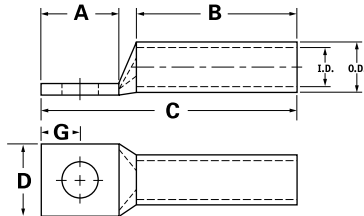
Features

- Manufactured from high strength seamless copper tubing
- Electro-Tin plated
- Chamfered entry
- Color coded
- Suitable for use in circuits rated 35KV or less, proper high voltage spacing and insulation techniques must be used
- UL Listed and CSA Certified with ILSCO and major competitor's compression tools
- UL467 Listed 500 kcmil - 8 AWG , #8 - #2 SOL
- For direct bury 500 kcmil - 10
- Rated to 90° C

Benefits

- Offers maximum conductivity and excellent crimping characteristics
- Provides low contact resistance
- For easy conductor insertion
- Identifies the proper compression die
- Application versatility
- Reduces inventory requirements

A



Catalog Number	Wire Size	Alt Wire Size	Expanded* Wire Range	Bolt Size	Stud Hole Dia.	Dimensions					Die Color Code	Die Index	O.D.	I.D.
						A	B	C	D	G				
CSWS-500-38	500kcmil	350 G,H,I,K,M FLEX 373.7 DLO	500kcmil - 250kcmil	3/8	0.406	0.875	1.300	2.907	1.535	0.546	Brown	I-87	1.062	0.828
CSWS-500-12	500kcmil	350 G,H,I,K,M FLEX 373.7 DLO	500kcmil - 250kcmil	1/2	0.562	1.250	1.300	3.282	1.535	0.414	Brown	I-87	1.062	0.828
CSWS-500-58	500kcmil	350 G,H,I,K,M FLEX 373.7 DLO	500kcmil - 250kcmil	5/8	0.656	1.437	1.300	3.469	1.535	0.671	Brown	I-87	1.062	0.828
CSWS-600-38	600kcmil	400 G,H,I,K,M FLEX 444.4 DLO	600kcmil - 250kcmil	3/8	0.406	0.875	1.375	3.059	1.712	0.414	Green	I-94	1.187	0.920
CSWS-600-12	600kcmil	400 G,H,I,K,M FLEX 444.4 DLO	600kcmil - 250kcmil	1/2	0.562	1.250	1.375	3.434	1.712	0.546	Green	I-94	1.187	0.920
CSWS-600-58	600kcmil	400 G,H,I,K,M FLEX 444.4 DLO	600kcmil - 250kcmil	5/8	0.656	1.437	1.375	3.621	1.712	0.671	Green	I-94	1.187	0.920
CSWS-650-516	650kcmil	500 G,H,I,K,M FLEX 535.3 DLO	650kcmil - 350kcmil	5/16	0.343	0.875	1.375	3.119	1.764	0.352	Pink	I-99	1.217	0.958
CSWS-650-38	650kcmil	500 G,H,I,K,M FLEX 535.3 DLO	650kcmil - 350kcmil	3/8	0.406	0.875	1.375	3.119	1.764	0.414	Pink	I-99	1.217	0.958
CSWS-650-12	650kcmil	500 G,H,I,K,M FLEX 535.3 DLO	650kcmil - 350kcmil	1/2	0.562	1.25	1.375	3.494	1.764	0.546	Pink	I-99	1.217	0.958
CSWS-650-58	650kcmil	500 G,H,I,K,M FLEX 535.3 DLO	650kcmil - 350kcmil	5/8	0.656	1.437	1.375	3.681	1.764	0.671	Pink	I-99	1.217	0.958
CSWS-700-38	700kcmil	500 G,H,I,K,M FLEX 535.3 DLO	700kcmil - 350kcmil	3/8	0.406	0.875	1.375	3.119	1.816	0.414	Pink	I-99	1.250	0.991
CSWS-700-12	700kcmil	500 G,H,I,K,M FLEX 535.3 DLO	700kcmil - 350kcmil	1/2	0.562	1.250	1.375	3.494	1.816	0.546	Pink	I-99	1.250	0.991
CSWS-700-58	700kcmil	500 G,H,I,K,M FLEX 535.3 DLO	700kcmil - 350kcmil	5/8	0.656	1.437	1.375	3.681	1.816	0.671	Pink	I-99	1.250	0.991
CSWS-750-38	750kcmil	600 G,H,I,K,M FLEX 646.4 DLO	750 kcmil - 500kcmil	3/8	0.406	0.875	1.500	3.277	1.901	0.414	Black	I-106	1.313	1.031
CSWS-750-12	750kcmil	600 G,H,I,K,M FLEX 646.4 DLO	750kcmil - 500kcmil	1/2	0.562	1.250	1.500	3.652	1.901	0.546	Black	I-106	1.313	1.031
CSWS-750-58	750kcmil	600 G,H,I,K,M FLEX 646.4 DLO	750kcmil - 500kcmil	5/8	0.656	1.437	1.500	3.839	1.901	0.671	Black	I-106	1.313	1.031
CSWS-1000-38	1000kcmil	750 G,H,I FLEX 777.7 DLO	1000kcmil - 750kcmil	3/8	0.406	0.875	1.625	3.525	2.169	0.414	White	I-125	1.500	1.172
CSWS-1000-12	1000kcmil	750 G,H,I FLEX 777.7 DLO	1000kcmil - 750kcmil	1/2	0.562	1.250	1.625	3.900	2.169	0.546	White	I-125	1.500	1.172
CSWS-1000-58	1000kcmil	750 G,H,I FLEX 777.7 DLO	1000kcmil - 750kcmil	5/8	0.656	1.437	1.625	4.087	2.169	0.671	White	I-125	1.500	1.172

All wire sizes, unless noted otherwise, are American Wire Gauge (AWG)

* When installed with specified dieless tools

See pages 87 to 97 for complete tooling information.

For Bent Tangs change the 4th letter to a B and add "-4" for 45 deg. or "-9" for 90 deg.

Tested to UL 486A/B, UL File E6207

