

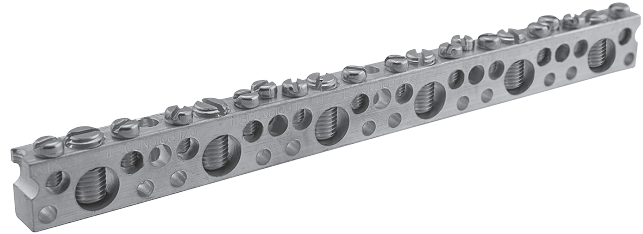
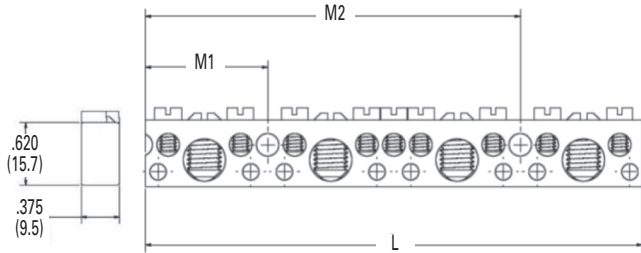
TYPE NBAE

Features

- Manufactured from high strength aluminum alloy
- Electro-tin plated
- Dual rated
- Assemblies available with 6-123 circuits
- UL Recognized for grounding and power, and CSA Certified

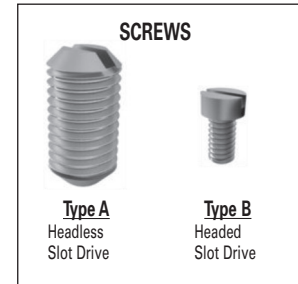
Benefits

- Provides maximum conductivity
- Low contact resistance
- Use with both copper and aluminum conductors
- Application versatility
- Ensures reliability



C

Catalog Number	Number of Large Circuits ¹	Number of Small Circuits ²	Mounting Hole Locations ³ in. (mm)		Dimensions - in. (mm)
			M1	M2	L
NBAE-0204-1	2	4	1.133 (28.8)	- -	2.265 (57.5)
NBAE-0307-1	3	7	2.305 (58.5)	- -	3.438 (87.3)
NBAE-0409-2	4	9	1.133 (28.8)	3.477 (88.3)	4.609 (117.1)
NBAE-0410-1	4	10	2.305 (58.5)	- -	4.609 (117.1)
NBAE-0512-2	5	12	2.305 (58.5)	4.648 (118.1)	5.781 (146.8)
NBAE-0615-2	6	15	3.477 (88.3)	5.821 (147.9)	6.954 (176.6)
NBAE-0924-2	9	24	2.305 (58.5)	9.336 (237.1)	10.468 (265.9)
NBAE-1233-2	12	33	5.820 (147.8)	8.164 (207.4)	13.986 (355.2)
NBAE-3192-0	31	92	- -	- -	36.250 (920.8)



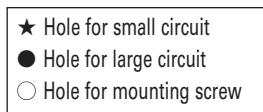
¹ Large Circuits have a conductor range of 1/0-14AWG

² Small Circuits have a conductor range of 6-14AWG

³ Mounting holes have a diameter of 0.203 in. (5.2mm)

Catalog Number	Configuration
NBAE-0204-1	★●★○★●★
NBAE-0307-1	★●★●★●★○★●★
NBAE-0409-2	★●★○★●★●★●★○★●★
NBAE-0410-1	★●★●★●★○★●★●★●★
NBAE-0512-2	★●★●★●★○★●★●★●★○★●★
NBAE-0615-2	★●★●★●★●★●★○★●★●★●★○★●★
NBAE-0924-2	★●★●★●★○★●★●★●★●★●★●★●★●★●★●★●★○★●★
NBAE-1233-2	★●★●★●★●★●★●★●★●★●★○★●★●★●★○★●★●★●★●★●★●★●★●★●★●★●★
NBAE-3192-0	★●★●★●.....★●★● x 28.....★●★●★

All wire sizes, unless noted otherwise, are American Wire Gauge (AWG)
 Tested to UL 486A/B, UL File E6207 and CSA C22.2 No. 65-03
 Tested to UL 467, UL File E6207



Aluminum Neutral Bars

Extended Conductors

Conductor Range: #6-#14 and 1/0-#14



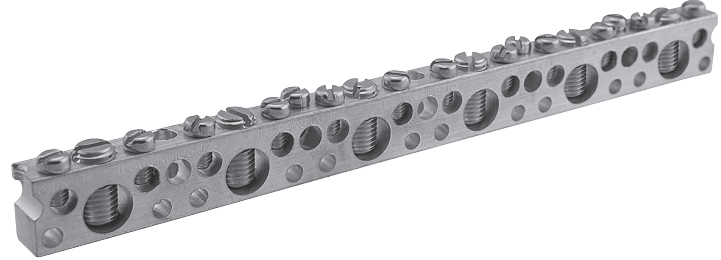
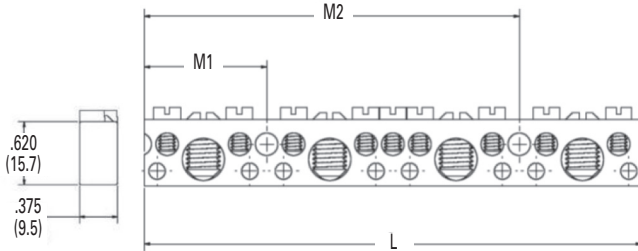
TYPE NBAE

Features

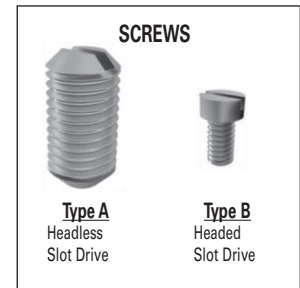
- Manufactured from high strength aluminum alloy
- Electro-tin plated
- Dual rated
- Assemblies available with 6-123 circuits
- UL Recognized for grounding and power, and CSA Certified

Benefits

- Provides maximum conductivity
- Low contact resistance
- Use with both copper and aluminum conductors
- Application versatility
- Ensures reliability



Catalog Number	Number of Large Circuits ¹	Number of Small Circuits ²	Mounting Hole Locations ³ in. (mm)		Dimensions in. (mm)
			M1	M2	L
NBAE-0204-1	2	4	1.133 (28.8)	- -	2.265 (57.5)
NBAE-0307-1	3	7	2.305 (58.5)	- -	3.438 (87.3)
NBAE-0409-2	4	9	1.133 (28.8)	3.477 (88.3)	4.609 (117.1)
NBAE-0410-1	4	10	2.305 (58.5)	- -	4.609 (117.1)
NBAE-0512-2	5	12	2.305 (58.5)	4.648 (118.1)	5.781 (146.8)
NBAE-0615-2	6	15	3.477 (88.3)	5.821 (147.9)	6.954 (176.6)
NBAE-0924-2	9	24	2.305 (58.5)	9.336 (237.1)	10.468 (265.9)
NBAE-1233-2	12	33	5.820 (147.8)	8.164 (207.4)	13.986 (355.2)
NBAE-3192-0	31	92	- -	- -	36.250 (920.8)



G

¹ Large Circuits have a conductor range of 1/0-14AWG

² Small Circuits have a conductor range of 6-14AWG

³ Mounting holes have a diameter of 0.203 in. (5.2mm)

Catalog Number	Configuration
NBAE-0204-1	★●★○★●★
NBAE-0307-1	★●★●★●★○★●★
NBAE-0409-2	★●★○★●★●★●★●★○★●★
NBAE-0410-1	★●★●★●★○★●★●★●★
NBAE-0512-2	★●★●★●★○★●★●★●★○★●★
NBAE-0615-2	★●★●★●★●★●★○★●★●★●★○★●★
NBAE-0924-2	★●★●★●★○★●★●★●★●★●★●★●★●★●★●★●★○★●★
NBAE-1233-2	★●★●★●★●★●★●★●★●★●★○★●★●★●★●★●★●★●★●★●★●★●★
NBAE-3192-0	★●★●★●.....★●★●★ x 28★●★●★

All wire sizes, unless noted otherwise, are American Wire Gauge (AWG)
Tested to UL 486A/B, UL File E6207 and CSA C22.2 No. 65-03
Tested to UL 467, UL File E6207

