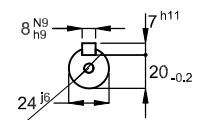


DE Shaft End



(DS DIN332)

DM8 WEG WPR-7339

Color RAL 5009  
Painting plan 205P  
Mounting B3T

1,1 kW 04 Poles 50 Hz A

ECM	LOC	SUMMARY OF MODIFICATIONS	EXECUTED	CHECKED	RELEASED	DATE	VER
EXECUTED	HYBRISUSER	THREE PH. MOTOR W22Xec IE2 FRAME 90S IP55 TEFC					
CHECKED							
RELEASED							
REL. DATE							

PREVIEW

WDD | 00

SHEET /

