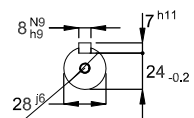


DE Shaft End



(DS DIN332)

DM10 WEG WPR-7339

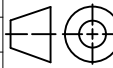
Color RAL 5009

Painting plan 205P

Mounting B3T

1.5 kW 06 Poles 50 Hz

A

ECM	LOC	SUMMARY OF MODIFICATIONS	EXECUTED	CHECKED	RELEASED	DATE	VER
EXECUTED	HYBRISUSER	 THREE PH. MOTOR W22Xec IE2 FRAME 100L IP55 TEFC					
CHECKED							
RELEASED							
REL. DATE							

HYBRISUSER

00

PREVIEW

WDD | 00

SHEET /

