

12345678910

A

B

C

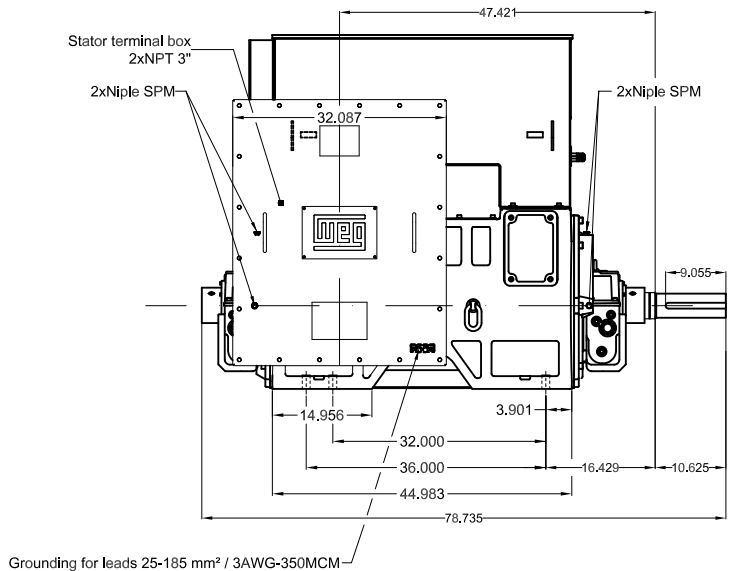
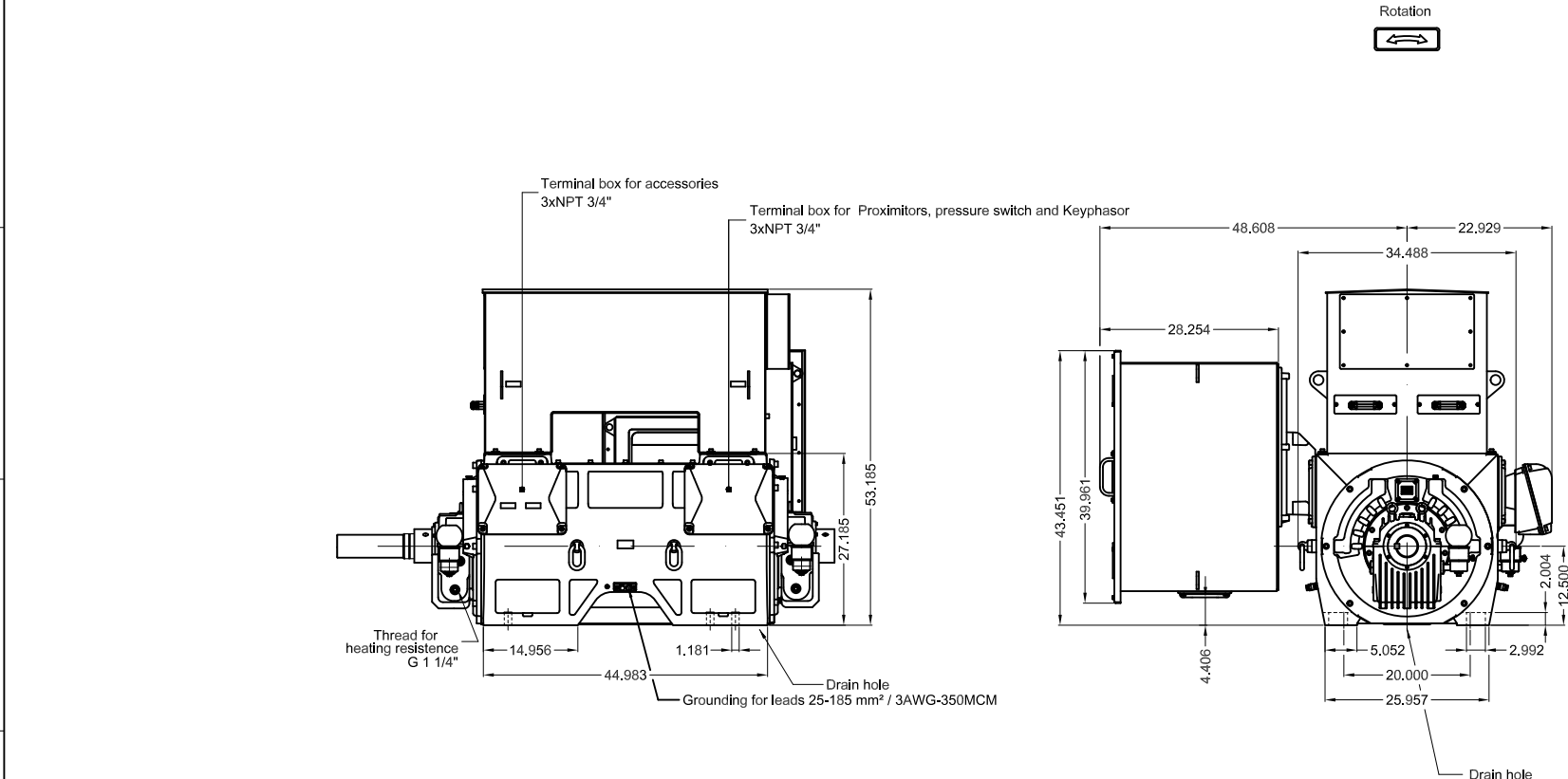
D

E

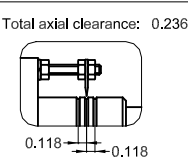
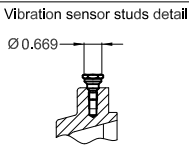
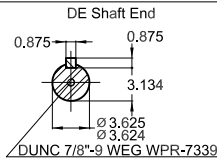
F



G

H



- Main terminal box can be rotated in 90° steps
- Connection cables 2000+100mm length from terminal box
- With jacking screws
- Designed for Bentley Nevada proximity sensors (2 per bearing) and 1 keyphasor
- With two sets of nameplates/label, one supplied loose
- DE and NDE sleeve bearings electrically insulated
- With three nameplates supplied loose, two according to data from auxiliary FDs
- Nameplate of the accessory terminal box
- Space heaters 110 to 127 V
- Terminal with 13 mm diameter hole for connection bolt
- Vibration grade according to API 541/547
- Stainless steel screws - AISI 316
- Provision for pressure switch sensor
- 304 stainless steel filter on air inlet
- Bearings with glass Trico Oilers
- Frame designed for dowel pins
- SPM studs
- Main terminal box with space heaters
- DE and NDE sleeve bearings designed for space heaters
- Color RAL 5009
- Painting plan 212P
- Mounting NEMA F-1
- Position of the stator terminal box can be changed (right / left)
- Mounting B3R(D)



		Bearing		Lubricant				
		DE	FNLB 9-90	ISO VG46				
		NDE	FNLB 9-90	ISO VG46				
600 HP 04 Poles 60 Hz 2300/4000 V						A		
WEC HOUSE ACCOUNT ENERGY								
						1:20		
		ALT. CONF. PCR 100000193138		GABRIELID	NARDELLI	NARDELLI	18.12.2023	07
		ALTERADO CONFORME PCR - 100000182681		JOHNLENONN	PAOLLA	PAOLLA	13.06.2023	06
ECM	LOC	SUMMARY OF MODIFICATIONS		EXECUTED	CHECKED	RELEASED	DATE	VER
EXECUTED	DOGE		THREE PH. MOTOR W60 HAZARDOUS AREA		1196240952			
CHECKED	RPAULI		FRAME 5010/11 IP24 ODP WP II		WDD 07			
RELEASED	GCASTRO							
REL. DATE	24.05.2021	WMO	Jaragua do Sul	Product Engineering	SHEET	1 / 1		