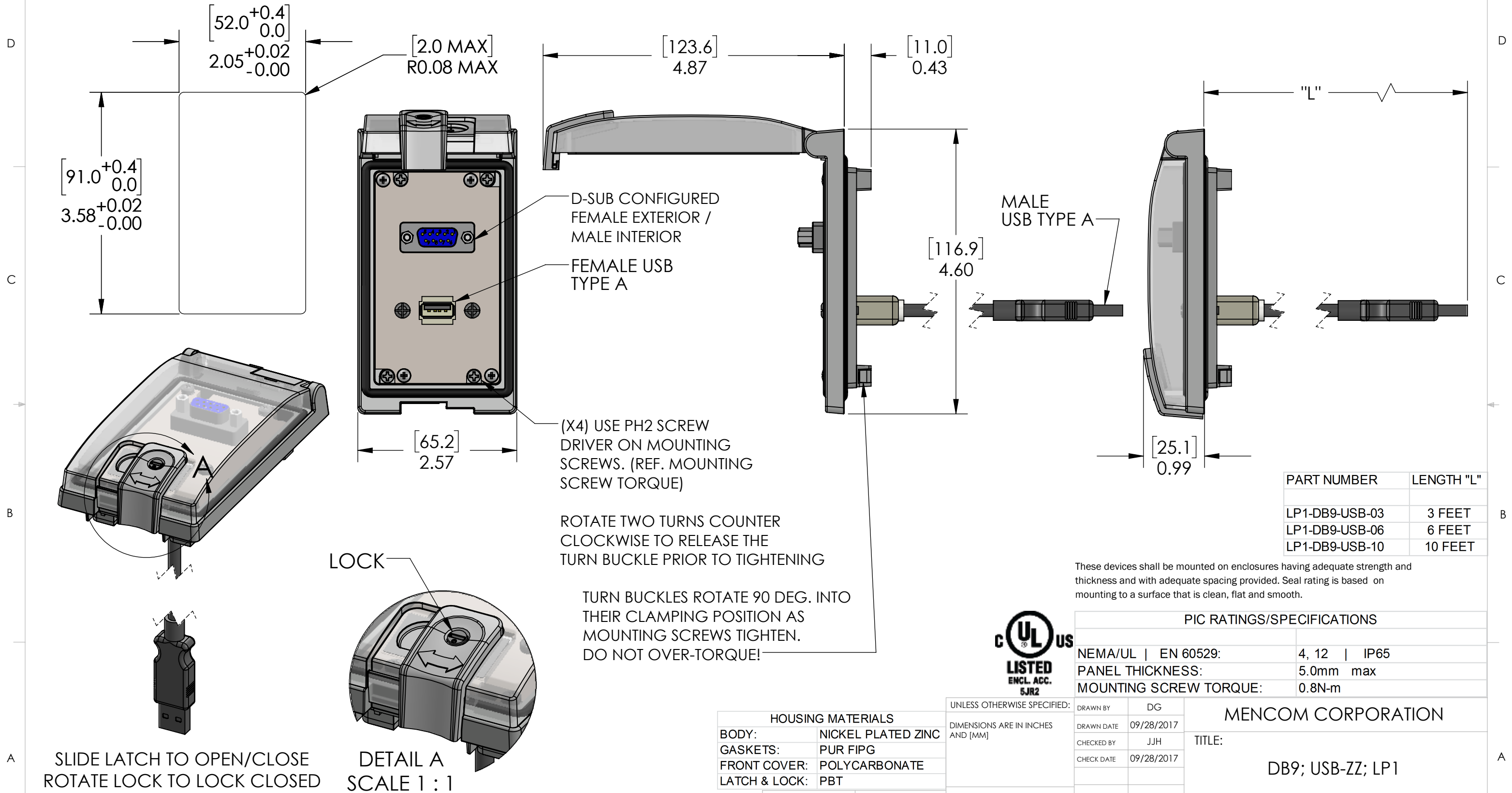


PANEL CUTOUT



PROPRIETARY AND CONFIDENTIAL  
THE INFORMATION CONTAINED IN THIS DRAWING IS THE SOLE PROPERTY OF MENCOM CORPORATION. ANY REPRODUCTION IN PART OR AS A WHOLE WITHOUT THE WRITTEN PERMISSION OF MENCOM CORPORATION IS PROHIBITED.



UNLESS OTHERWISE SPECIFIED:  
DIMENSIONS ARE IN INCHES AND [MM]

MATERIAL
FINISH
DO NOT SCALE DRAWING

DRAWN BY DG  
DRAWN DATE 09/28/2017  
CHECKED BY JJH  
CHECK DATE 09/28/2017  
COMMENTS:

PIC RATINGS/SPECIFICATIONS

NEMA/UL   EN 60529:	4, 12   IP65
PANEL THICKNESS:	5.0mm max
MOUNTING SCREW TORQUE:	0.8N-m

MENCOM CORPORATION

TITLE: DB9; USB-ZZ; LP1

SIZE B DWG. NO. LP1-DB9-USB-ZZ REV A

SCALE: 2:3 WEIGHT: SHEET 1 OF 1