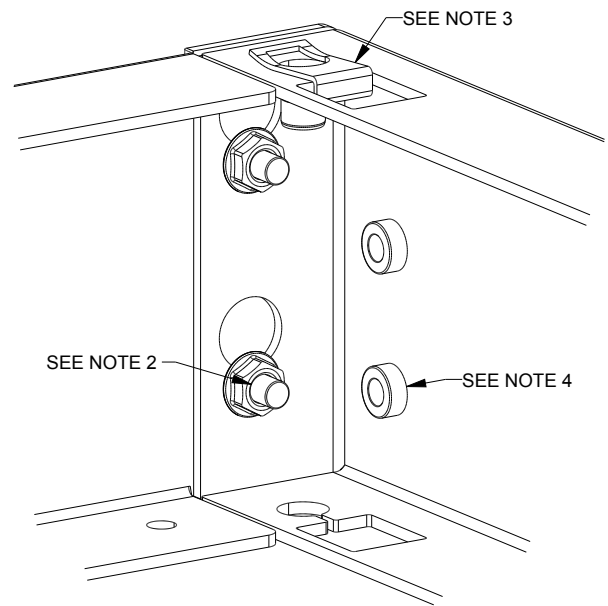
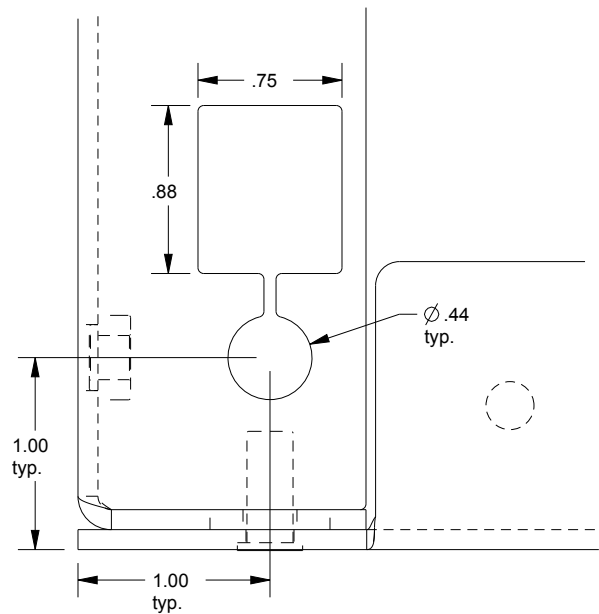


# SAGINAW CONTROL & ENGINEERING

## SCE-P011606



- CONSTRUCTION NOTES:
1. THE PLINTH BASE IS A BOLT TOGETHER CONSTRUCTION.
  2. THE BASE WILL BE BOLTED TOGETHER USING 1/4-20 HARDWARE, WHICH IS INCLUDED IN THE BOLT PACK.
  3. 5/8-16 "U" NUTS & BOLTS, FOR SECURING TO AN IMS ENCLOSURE, ARE ALSO INCLUDED IN THE BOLT PACK.
  4. 1/4-20 PEM NUT PROVISIONS IN THE SIDE CHANNELS FOR ATTACHING OPTIONAL MOUNTING ANGLES.

