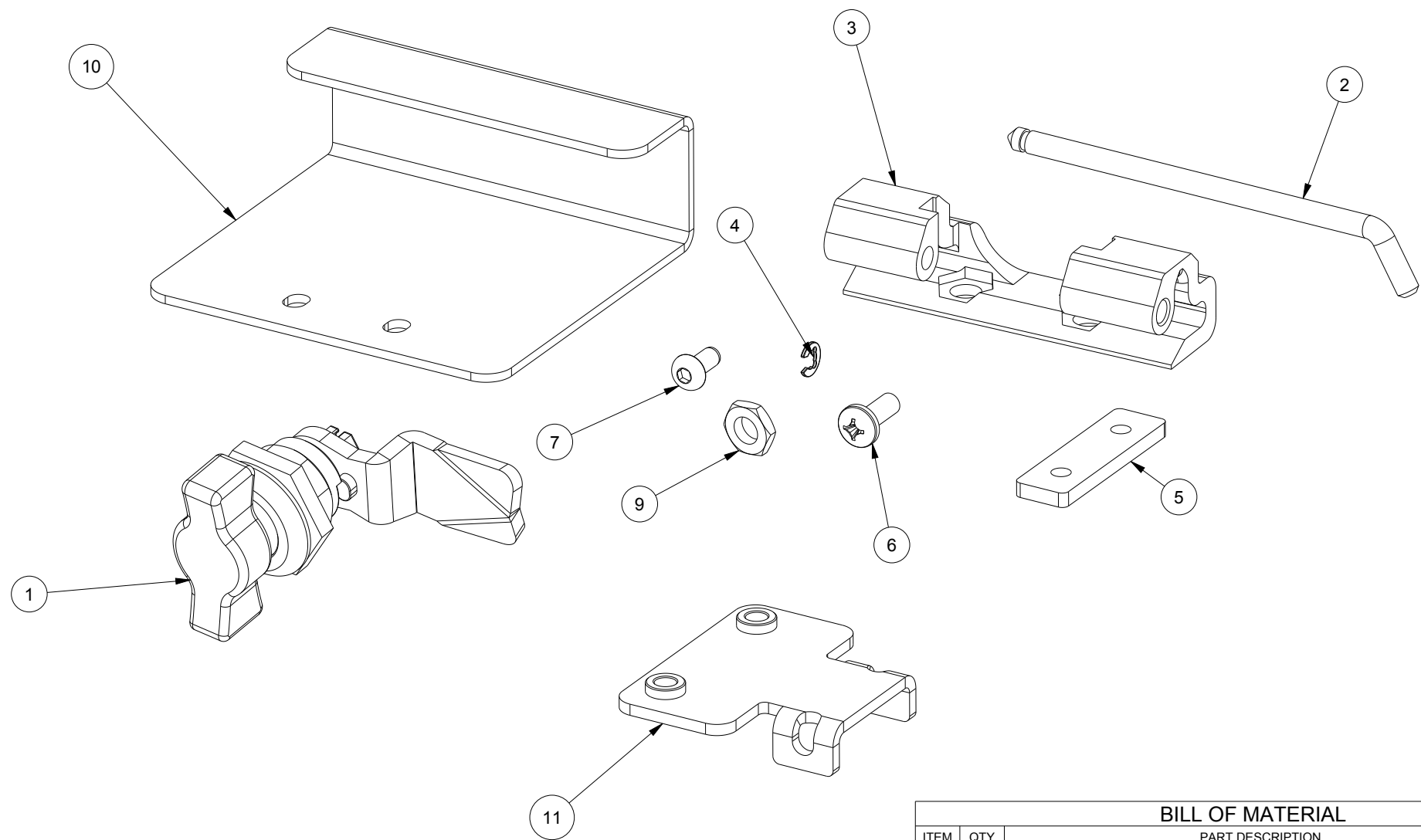


SAGINAW CONTROL & ENGINEERING

SCE-113282



BILL OF MATERIAL

ITEM	QTY	PART DESCRIPTION	PART I.D.
1	2	Latch, 1/4-Turn, Wing Knob w/ 28mm Cam, Black SCE-DLWKF-28	101080
2	4	Hinge Pin, Large Concealed, Stainless Steel	101221
3	4	Hinge, Large Concealed, Zinc Die Cast, Clear	101369
4	4	Retainer, E-Clip, 0.03"Thick X 0.16" ID X 0.35" OD, Stainless	101670
5	4	Nut Plate, 10-32, Steel, Zinc Clear	102140
6	8	Screw, Pan Head Phillips, 10-32 X 1/2", Steel, Zinc Clear	102470
7	4	Screw, Button Head Torx, 10-32 X 3/8", Stainless	102483
8	3	Hinge Assembly, Large Concealed, Steel	103288
9	8	Jam Nut, Hex, 1/4-20, Steel, Zinc	106491
10	2	Dead Front Catch Bracket, 3.25 x 3.5 x 1.25 x 0.08, Zinc	113793
11	4	Dead Front Hinge Bracket, Steel, Zinc Clear	115751