

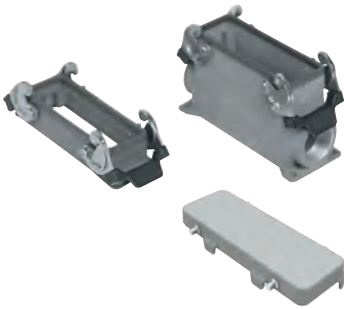


CH - CA and MH - MA EMC version for electromagnetic compatibility

inserts		page:
CD	64 poles + ⊕	72
CDD	108 poles + ⊕	81
CDS	42 poles + ⊕	-
CDSH	42 poles + ⊕	89
CNE	24 poles + ⊕	113
CSE	24 poles + ⊕	-
CSH	24 poles + ⊕	113
CSH S	24 poles + ⊕	125
CCE	24 poles + ⊕	133
CMSH	10+2 (aux) poles + ⊕	140
CMCE	10+2 (aux) poles + ⊕	141
CSS	24 poles + ⊕	151
CT, CTS (10A) *	64 poles + ⊕	157
CT, CTSE (16A) *	24 poles + ⊕	163
CQE	46 poles + ⊕	171
CQEE	64 poles + ⊕	177
CX	4/8 and 6/6 poles + ⊕	204 and 206
MIXO	6 modules	262 - 317

\*) only for enclosure CHIS 24

housings and cover

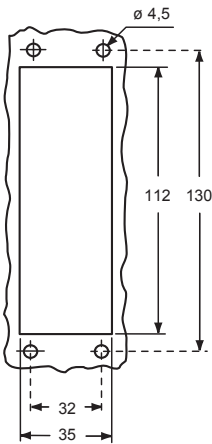


hoods and cover

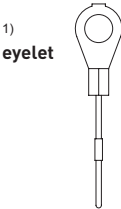


description	part No.	entry Pg	part No.	entry M	part No.	entry Pg	part No.	entry M
bulkhead mounting housing with levers and gasket	CHIS 24	—						
surface mounting housing, with levers, high construction	CAPS 24.21	21	MAPS 24.32	32				
cover with 4 pegs (for enclosures with 2 levers) <sup>1)</sup>	CHCS 24							
enclosure with pegs, side entry					CHOS 24	21	MHOS 24.25	25
enclosure with pegs, side entry							MHOS 24.32	32
enclosure with pegs, side entry, high construction					CAOS 24.29	29	MAOS 24.32	32
enclosure with pegs, side entry, high construction							MAOS 24.40	40
enclosure with pegs, top entry					CHVS 24	21	MHVS 24.25	25
enclosure with pegs, top entry							MHVS 24.32	32
enclosure with pegs, top entry, high construction					CAVS 24.29	29	MAVS 24.32	32
enclosure with pegs, top entry, high construction							MAVS 24.40	40
cover with 2 levers (for enclosures with 4 pegs) <sup>2)</sup>					CHCS 24 G			

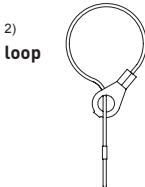
panel cut-out for bulkhead mounting housings



For fixing on housings



For fixing on hoods



**CALUS** Type 4/4X/12

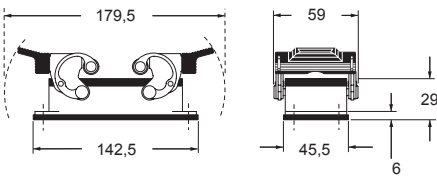


insulating cable gland or fittings without gasket

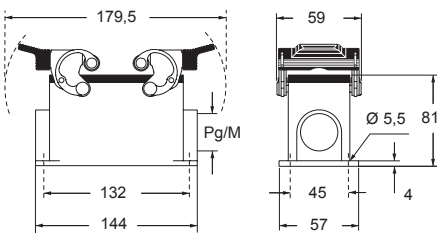


cable gland with O-Ring gasket

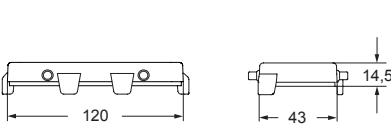
CHIS



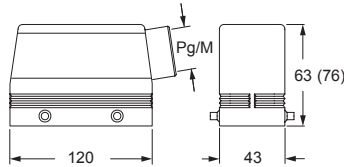
CAPS and MAPS



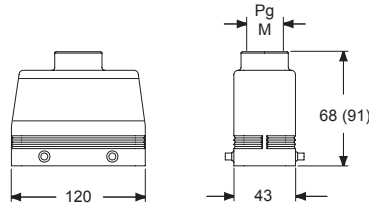
CHCS



CHOS (CAOS) and MHOS (MAOS)



CHVS (CAVS) and MHVS (MAVS)



CHCS G

